

**TID** 2011 Award  
Taiwan Interior Design

臨時建築 Interim Architecture

飛簷  
The edge

西華藝室內裝修設計工程有限公司 CitiWorks Interior Decoration Design Co., Ltd.

主持設計師  
Chief Designer

張熙昌 HSAI-CHANG ,CHANG

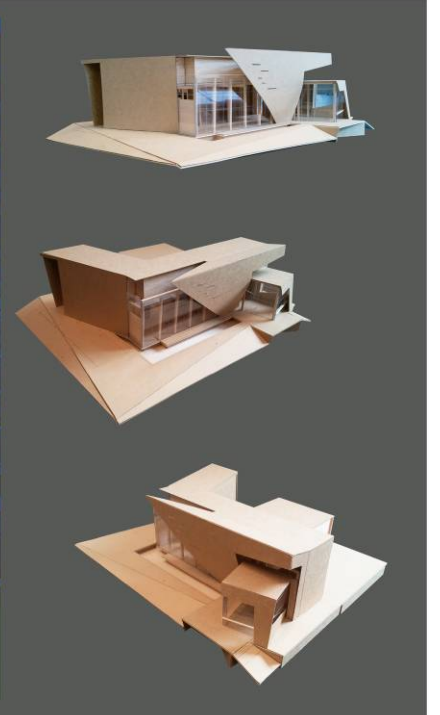
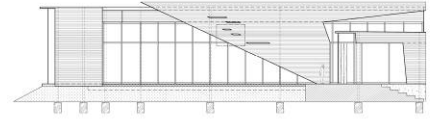
協同設計師  
Co-designer

曹長菁 CHANG-CHING, TSAO

攝影者  
Photographer

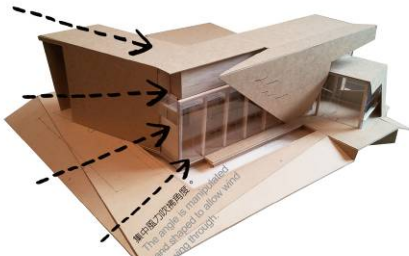
鄒昌銘 Benjamin Tsou

# 飛簷



1. 本案是以強風吹拂當中，屋簷發生漂移而產生解離感為發想的理念，原因在於本案位於宜蘭平原業主強調當地的風勢大，需非常留意建物抵禦強風的能力，為此我們以「風」來作為設計的主軸。  
 1. Since this project is located in the I-Lan Plain, the design concept is originated from and centered from drifting wind. The owner of the residence has suggested the wind is rather powerful, thus we have adopted the notion of flowing wind as our design concept.

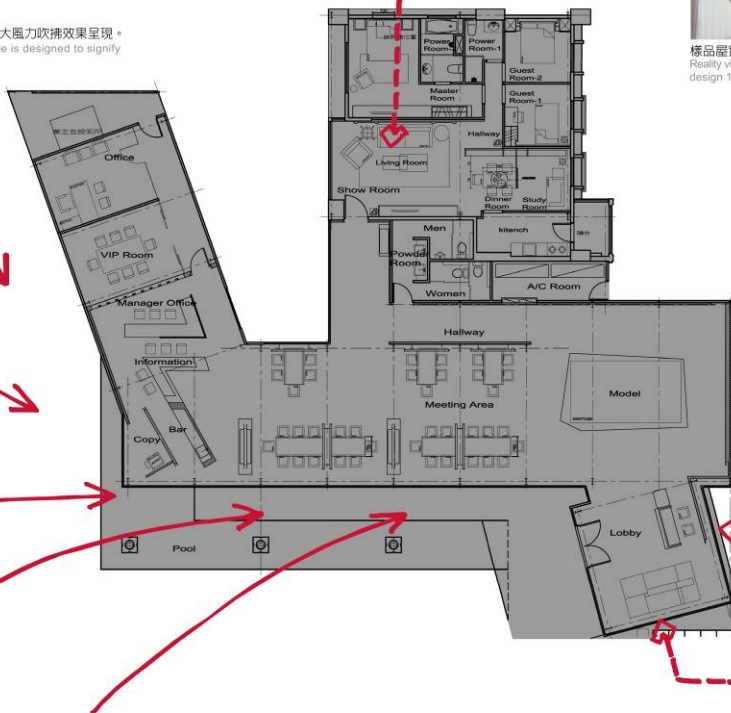
P1.



建築物外觀以強大風力吹拂效果呈現。  
 Building Façade is designed to signify blowing wind.



樣品屋實境 1。  
 Reality view of the design 1.



預設強風吹拂方向。  
 Direction of strong wind.



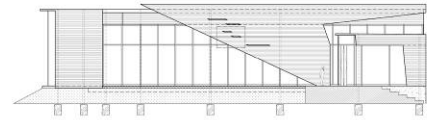
樣品屋實境 2。  
 Reality view of the design 2.



接待入口處以高彩度橙橘色樹影來包覆，透過陽光的過濾，廊入口處產生溫暖的色溫，且光源是純天然的。  
 Natural sunlight is utilized to reflect the highly saturation orange colour in order to provide a warm atmosphere in the foyer and reception areas.

P2.

# 飛簷

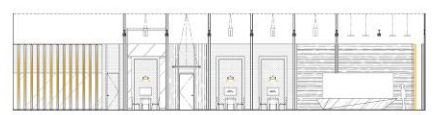


4.

2. 利用全透的玻璃窗體增加景觀的懸浮程度。
  3. 接待入口處的橙橘色光影與實體植樹間的互動，形成一種虛與實之間的表演意味。
  4. 夜晚將至，將白天的屋簷表演權，經由夜色一步步移轉給與玻璃基體來主導。
2. Transparent glasses are used to create the visual effects of layers and floating roofs.  
3. The orange-coloured lighting and shadow associated with indoor plantation forms a spectacular visual effects.  
4. One part of the structure. Upon the night falls, the glass roof allows the sky to conduct a natural light show inside the residence.

P3.

# 飛簷



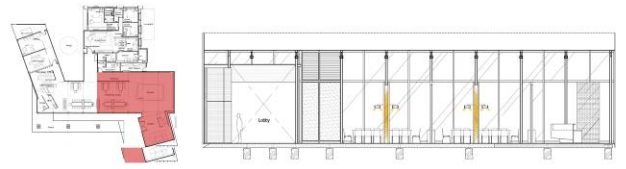
5.

6.

5. 橙橘色光影入口處利用線性重疊來產生不同的視覺感觀。
  6. 主要銷售中心，每區都有自己的吊燈，商業談判的過程中，增加些許家的氛圍，因為本案是一個賣“家”的建物。
5. The orange-coloured theme of the entrance area has been designed with linear elements to create a distinguished visual effect.  
6. The sales centre has been fitted with different chandeliers in each area. The purpose of which is to create a feeling of a "home" in this Residence sales office.

P4.

# 飛簷



7. 銷售區域，斜張的屋簷在室內所呈現美感。  
8. 辦公人員區域牆面，以交錯鏡來強化空間線性交疊的其它延伸可能。  
9. 銷售區域全景，使用大量的木質牆面，以抵消鋼構本身的冰冷感。  
7. One part of the sales office. The oblique eaves presents a stunning visual effect.  
8. Staggered mirrors are installed in the office area to reinforce the linear space as well as creating a extended visual effect.  
9. Panorama view of the sales area. Wooden texture and materials are utilized to neutralize the cold, hard feeling of metals.