

TID2011 Award
Taiwan Interior Design

臨時建築 Interim Architecture

Modern Chiness Garden

達觀國際設計事務所 Kris Lin Interior Design

主持設計師
Chief Designer

凌子達 Kris Lin

協同設計師
Co-designer

楊家瑀 Yang Jiayu

攝影者
Photographer

周耀東 Zhou Yaodong

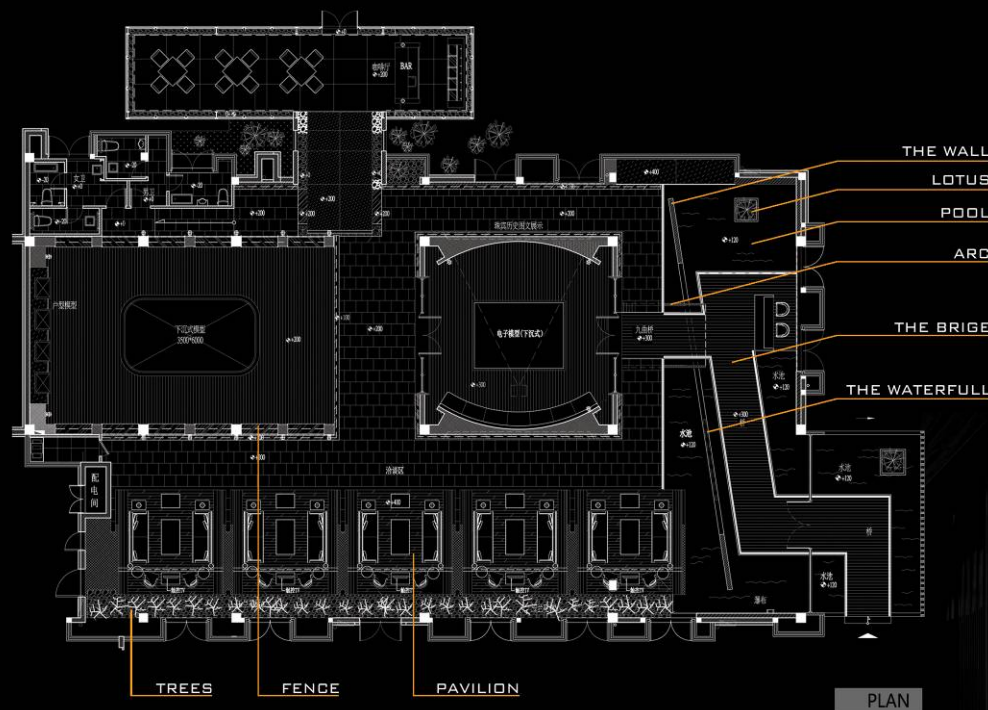


設計說明：

這個項目是房地產的售楼处，它位於市區繁華地段，周圍車水馬龍，十分吵雜，設計開始之初就希望能夠隔絕外面吵雜的車流，以達到室內安靜，優雅的氛圍。希望把[中式園林]的概念融入到室內空間，使人們好像在花園裏頭遊走一樣。

我們運用了許多中式園林的元素在室內，從入口處一開始光走進[小橋]，由[小橋]穿過[水池]，水池中間跨過一個懸空的[圍牆]，懸空的牆面設計了[瀑布]，小橋的盡頭是用銅雲打造的[荷花池]，然後轉個彎穿過[拱門]，進入下一個空間，整個流程動線是採用了中式園林設計中的[移步換景]的手法，每走一段路或轉個彎都會見到一個視覺的端景。VIP室是用了[亭子]的概念來設計的，共有5個亭子，都是半開放的形式，5個亭子之間也互不幹擾，亭子旁邊有一排[樹林]，在模型區是用有色不銹鋼去呈現出[圍籬]（Fence）的概念。

雖然在設計上運用了許多中式園林的元素，例如[小橋]、[水池]、[圍牆]、[瀑布]、[荷花池]、[拱門]、[亭子]、[樹林]、[圍籬]等，但都會轉化成現代的手法與造型，並用金屬、木材、大理石等材料來表現質感，期望塑造出優雅，高貴的[Modern Chinese Garden]空間。



Design Description:

This project is a sales office of real estate, is located in the flourishing urban area where is crowded with people and moving cars and very noisy. It is expected to isolate the noisy traffic outside at the beginning of the design, so as to achieve the quiet and elegant indoors atmosphere. It is hoped to melt the [Chinese garden] concept into the interior space, so that people are seemed to walk in the garden.

We use a lot of elements of Chinese garden in the room, from the entrance the light shade onto the [bridge], passing the [bridge] across the [pool], the middle of the pool passes across the suspending [wall], suspending wall is designed with a [waterfall], the end of the bridge is built with copper made [lotus pond], and then a turn through the [arch], enters into the next room, the moving line of the whole process is the use of pace-moving and view-shifting methods in the design of Chinese gardens, a visual end-view will be seen after walking some paces or a turn. VIP room is designed with a [pavilion] concept, there are totally five pavilions, which are all in semi-open forms, the five pavilions are not disturbing each other, a row of [trees] is arranged near the pavilions, the colored stainless steel is used in the model to show the concept of [fence].

Although a lot of elements such as [bridge], [pool], [wall], [waterfall], [lotus pond], [arch], [pavilion], [wood], [fencing] and so on of Chinese gardens, are used in the design, it will be converted into modern technique and styling. Metal, wood, marble and other materials are adopted to show their texture and shape, which are expected to create elegant and noble [Modern Chinese Garden] space.

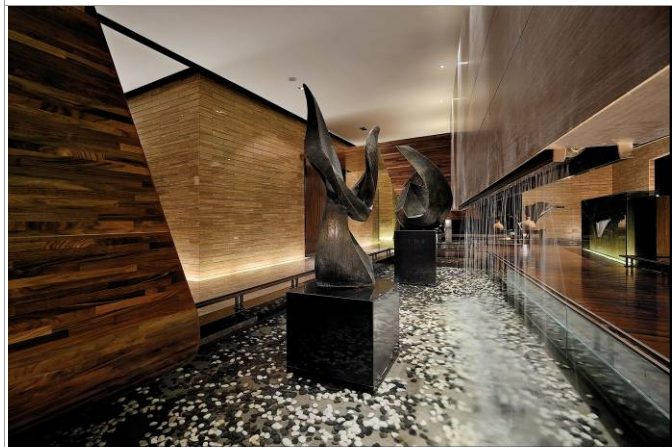


LOTUS

POOL



ARC



THE WATERFULL



MODERN CHINESE GARDEN





MODERN CHINESE GARDEN



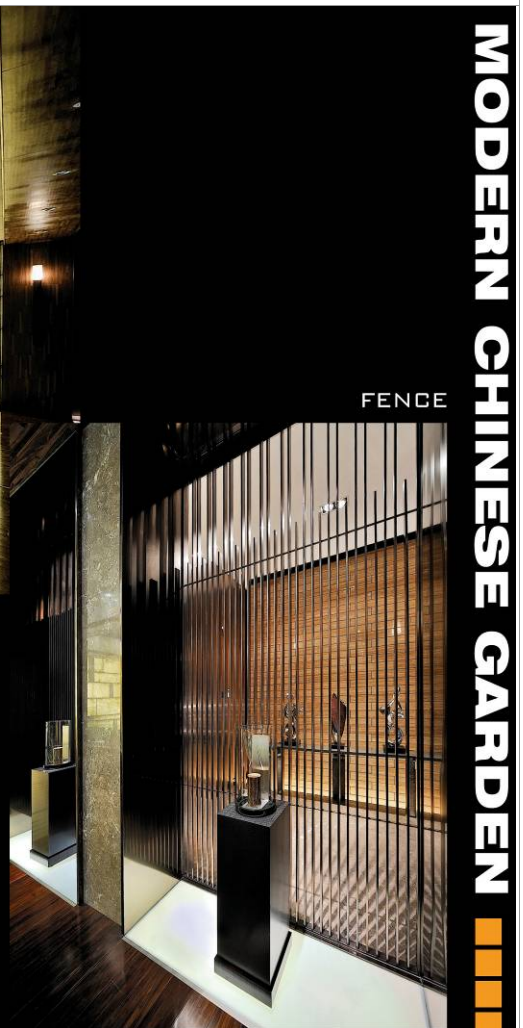
TREES



PAVILION



FENCE



MODERN CHINESE GARDEN

