

TID 2011 Award
Taiwan Interior Design

公共空間 Public space

安寶醫院
EMBO HOSPITAL

龍采興業有限公司 Long Tsai Corp.

主持設計師
Chief Designer

吳清義 Ching-I Wu

蔡韻之 Melody Tsai

蕭敏正 Michael Xiao

協同設計師
Co-designer

林蔚菘 Wei-Sung Lin

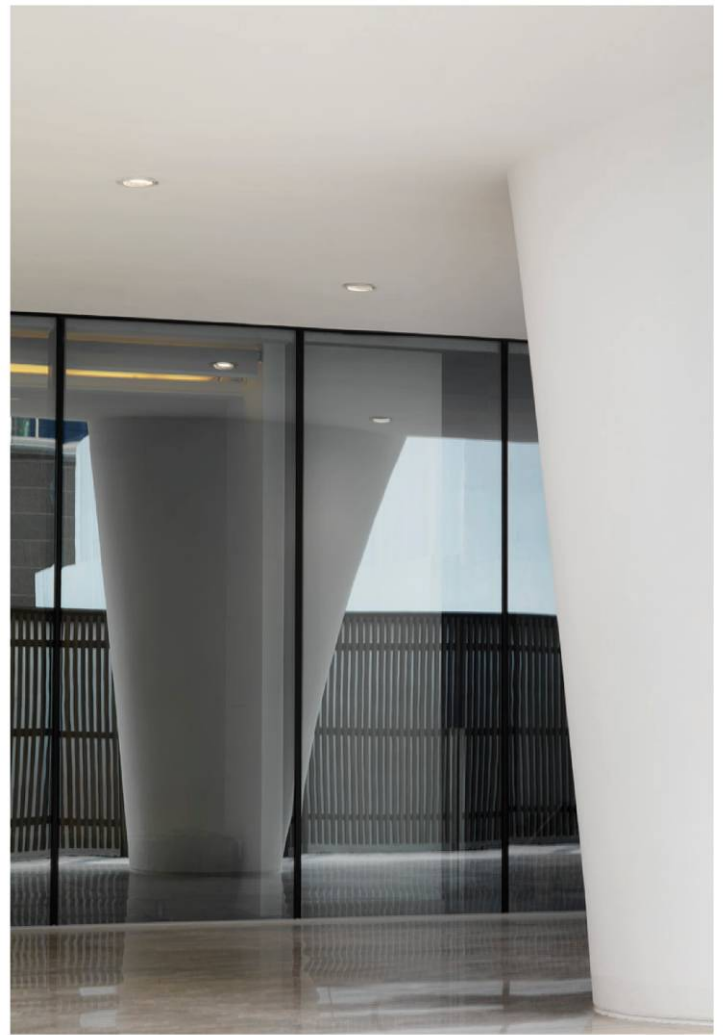
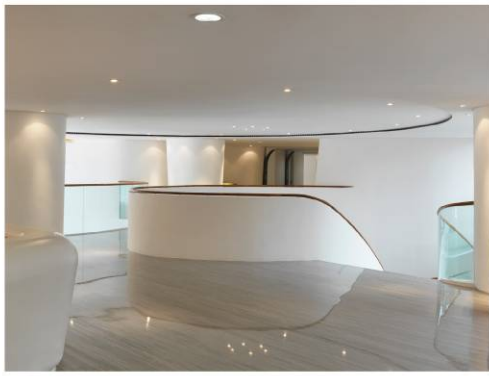
林小雲 Toria Lin

陸璐 Rema Lu

攝影者
Photographer

Marc Gerritsen
王蕾 Audrey Wang

安寶醫院

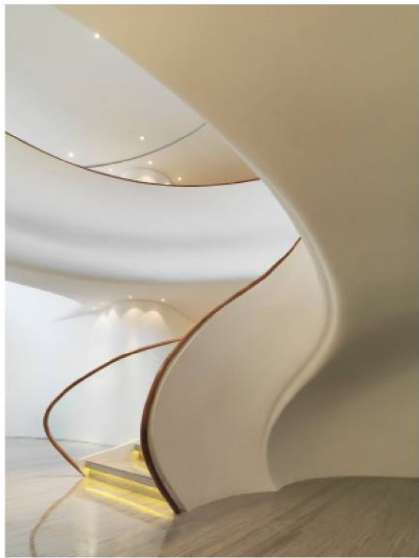


以動態均衡為主軸，運用明亮光線、開闊空間規劃出流暢動線。看似由隨興一點而始的樓梯，流線而上發展成一個問號狀的藝品，精準地建構了垂直的動線。由點轉化成面，由樓階轉化至空橋，一筆勾勒出的弧線狀似胚胎，孕育著空間的無限可能。

拆解樓板後新生挑空大廳中，由一樓直通二樓之橢圓錐柱在開闊中營造氣勢的同時也巧妙的包覆了各種為醫院機能所需的管線。

廊道上運用云細綿長的線條交錯層疊，加上如水波般不規則，狀似不協調卻有規律的連接上下樓層的牆面，創造出理性又有興趣的空間。

大量運用再生大理石拼排地面，賦予石材新生，也給予空間自然的氣息。顛覆傳統的醫院形象，除去冰冷及稜角，用生動及柔和在這孕育新生命的空間裡帶給人愉悅的經驗。



1ST FLOOR



2ND FLOOR

A **revolutionary** design in health care, particularly the transformation of the mundane walls is now developed into progression of vibrating **curved** lines. The staircase is the heart of this design. By revealing the **smooth** spiral passage also enhances the lighting and **space** expansion. The opening drawn to the skywalk forms like an embryo, symbolizes the beginning of **life** and the purpose of this hospital. Aside, two cone-shaped pillars were constructed from the ground floor via the ceiling covering all pipes and cables for all functional connectivity. Aiming to respect the environmental aspect, **recycled** segments were utilized that could have become excess waste; **reused** and sustained raw material. The environment not only created a new inspiration for global hospitals but world wide services.

