

TID 2011 Award
Taiwan Interior Design

公共空間 Public space

時尚泉源之樹 - 西園 29 服飾創作基地
Fashion Institute of Taipei

建構線設計有限公司 X-Line Design Co. Ltd.

主持設計師
Chief Designer

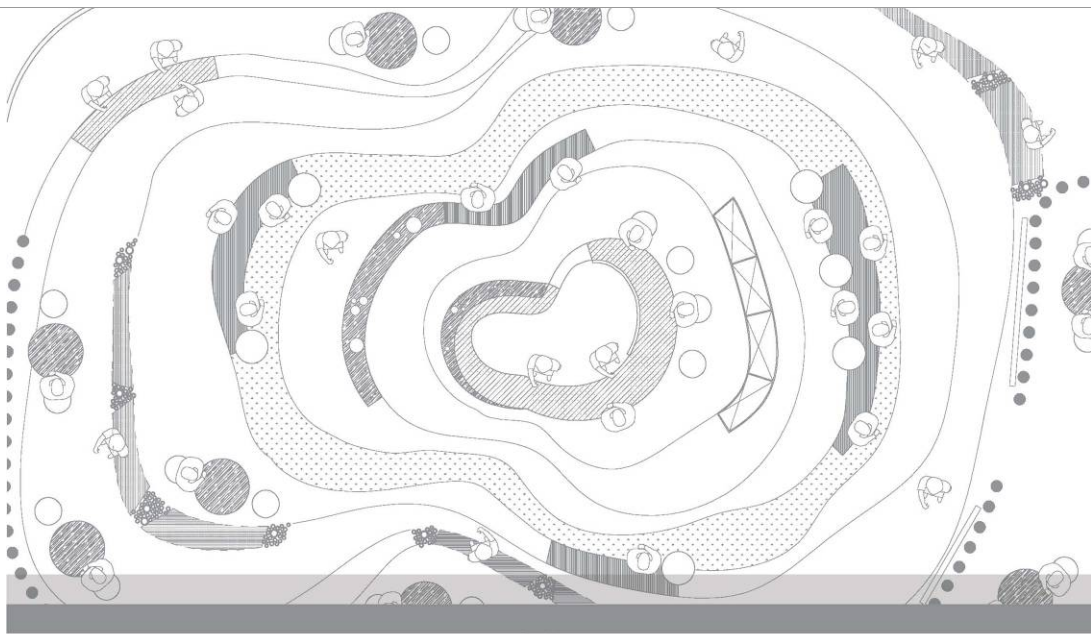
沈志忠 CHIN CHUNG SHEN

協同設計師
Co-designer

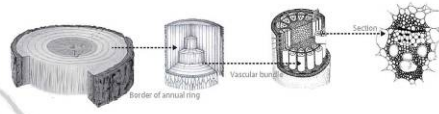
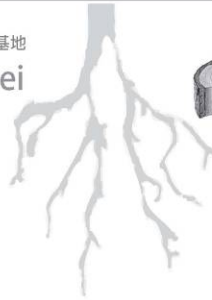
邱靜玉 Melody Chiu

攝影者
Photographer

游宏祥 Kyle Yu



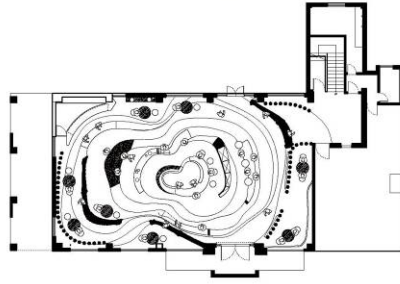
時尚泉源之樹 - 西園29服飾創作基地
Fashion Institute Taipei



服裝設計是以人體的形態與肌膚為考量，所選用的材料也都蘊含著有機體，因此我們設定大自然的「樹」為此案的設計主軸。
萬華服飾文化會館將化身為萬華最重要的一棵樹，扮演著培育臺灣國際服裝設計人才的角色。

Clothing design gives consideration to the shape and skin of the human body and uses materials with organic compounds. Therefore, we set one of nature's life forms - "Tree" as this project's theme. Wanhua Fashion Culture Museum will transform into the most important tree in Wanhua, and cultivate international fashion design talents in Taiwan.



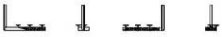
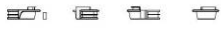


空間的設計概念以有機的型態出現，象徵著設計的多元發展與未來蓬勃發展的創造能量。進入一樓接待廳空間區如進到樹的內部，空間概念取自於樹體的結構，藉由年輪的脈絡組織空間的形體，賦予空間機能；在垂直層面上，採用植物體的「維管束」概念，藉管束與纖維分解與能量傳輸的功用，在此我們將管束定義為發光體，將光的能量傳達到空間中。

The design concept of the space was to use an organic form to symbolize diverse development and creative energy of fashion design. When you enter the reception space on the first floor, it is like entering into a tree; the spatial concept is based on the structure of a tree, and spatial functions are created using growth rings. For the vertical image, the concept of "vascular bundle" of plants is applied; vascular bundles transfer nutrients and energy. Thus, we define vascular bundles as lights, emitting the energy of light into the space.



FURNITURE DESIGN



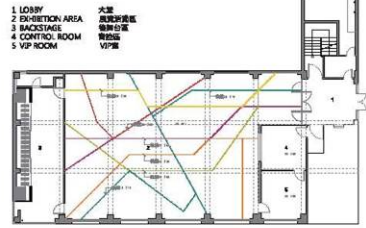
DESIGNER STUDIO



二樓的工作區域，以「樹中巢」的象徵意涵起頭，意指服裝設計要有蜂巢式縝密的心思。我們在大樹的空間中建起一格格玻璃巢穴，巢穴裡孕育著時尚種子—服裝設計新秀，設計師以此為出發點，從文化空間地景適合的角度與因字，讓它們實穿於垂直水平的空間中，服飾文化標識能力與影響力自然流瀉於其中。

The studio on the second floor starts out as a hive in the tree, indicating that its fashion designs must be careful and thorough like a bee hive. We built a glass hive in the space of the large tree, where crystal seeds are nurtured - rising stars of fashion design. This is the starting point where designers find the most suitable angle and elements of the culture museum, and let them penetrate the space, so that the creativity and influence of the fashion culture museum naturally flows within the space.





三種多功能活動展演空間，以萬華街區和廊道為藍圖，將街道轉變成舞台的佈局反映到天花板上。靈活度最佳且實用性概念設計，讓空間可以因應實際應用多元變化場景與展示功能，進而擴大使用效益的展演舞台。

The third floor is a multifunctional activity space designed using the streets of Wanhua District as a blueprint, turning streets into tracks on the ceiling. The design is based on the concept of multifunctional and flexible utilization, and allows space to serve diverse audiovisual and exhibition functions, turning it into a performance stage with maximum effectiveness.

