

**TID** 2011 Award  
Taiwan Interior Design

居住空間/複層 Residential space / Multi Level

J-HOUSE

大間空間設計有限公司 DA-JIAN Interior design Company

主持設計師  
Chief Designer

江俊浩 CHIANG CHUN-HAO

協同設計師  
Co-designer

李欣 LI HSIN

攝影者  
Photographer

小雄梁彥影像工作室 SHAO SHONG LIANG YAN  
PHOTOGRAPHY STUDIO

基地位置-台北市信義區信義路四段395巷6弄10號11樓

基地面積-室內25坪

空間性質-住宅空間

主要建材-鐵件、集層原橡木地板、明鏡、實木、石材

Location: Xin-yi District, Taipei City, Lane 395, Xinyi Road, Sec 6, Lane 10, 11 Floor

Floor Area: 25 Pyeongs (890 Square Feet)

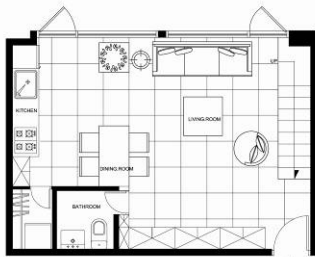
Space Used for Private (Residential)

Architecture Materials and Flooring: Iron, oak wood, mirrors, hard wood, stone

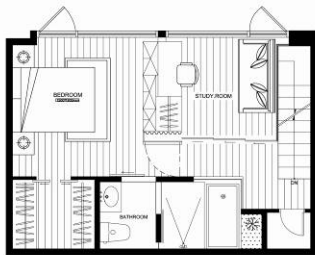
Living Room



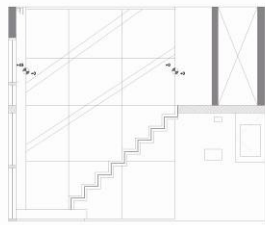
J-HOUSE



1F 平面圖



2F 平面圖



樓梯剖面圖

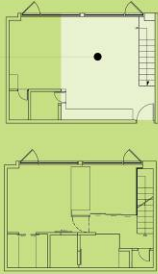
建築師Daniel Libeskind曾經說過:「空間的建構如同音樂一樣,都有其獨特聲音、調子」。如果空間欠缺想像和感染力,那它只能夠訴說沉悶平庸的故事,但是,成功的設計者如能將生活的情感與空間美學結合,那它將演繹出文化與情感的故事。當建構的空間藉由純粹的色彩和視覺光影的重疊時,其延伸出獨特自有的旋律與節奏,那房子將不只是居住的器具。

居住者本身的背景為華裔法籍人士,長年旅居不同國家及生活在不同文化領域中,對於居住環境有著不同美學上的見解,並希望居住空間並非時下住宅樣板。在原有空間尺度不足下,設計師在設計溝通階段中提出解決小空間的尺度限制方法,利用原有空間創造出附屬空間,以解決環境尺度問題,再透過附屬視覺空間將內部立面延伸達到非刻意創造出的強烈視覺效果。



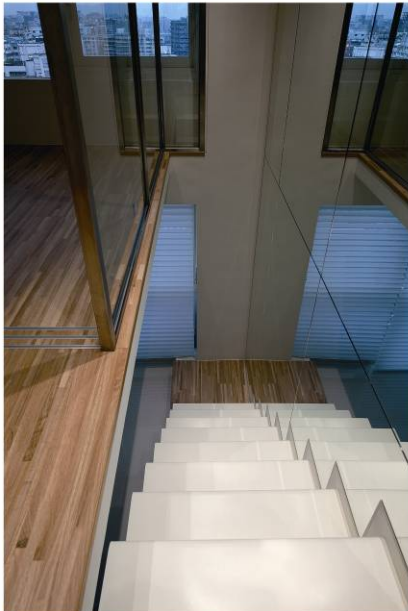


Living Room



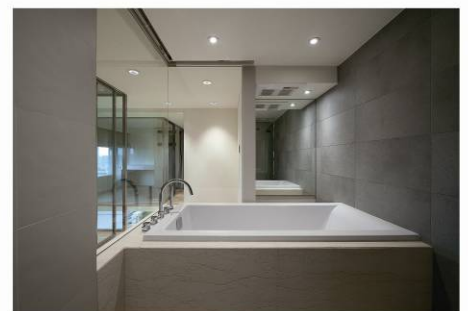
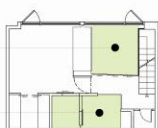
在設計的主軸設計師將空間釋放出以純白色調搭配木紋材質形塑一樓空間，利用鏡面反射出空間中純粹的線條比例及影像，試圖將創造出的複疊虛擬畫面與真實空間平衡的結合。透過流動的影像及脫離環境框架的限制，反映出空間與影像重新組合的豐富性。原有封閉的二樓空間，以折板鋼梯輕盈的線條將一樓與二樓空間自然的連結。

運用透明玻璃圍塑出閱讀及浴廁空間，試圖以空間借空間的設計手法創造超越既有視覺的限制，營造出空間的擴大性及環境的一貫性。設計師認為當居住空間獲得真正的解放，牆不在只是牆，真正展演的是居住者與居住空間，那住宅必能述說時間、情感及生活的深層文化內涵。



Study Room

Bathroom

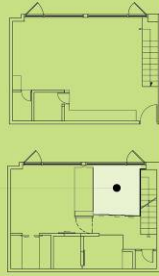


The resident is an Asian French who has traveled consistently and been exposed to various cultural settings. He has his own exclusive insights on architectural aesthetics and does not appreciate ordinary housing modules.

Given the limited space, designers work closely with him to amplify the space by creating an "affixed" sub-space. The whole space is then redesigned through extension of interior dimensions so that one's appreciation of the room may be less prone to the distraction of a space affixation.

The designing mastermind, Chiang, cultivates the first floor with wood grain and the hue of pure white in hopes of maximizing the sense of space. One's perception of the space may be again reshaped by the use of mirrors, which reflects the sheer ratio of lines and images, amalgamating the overlapping of visions and the equilibrium of real space. The flux of images and the departure from the circumscribed framework together yield incredible richness to the marriage of space and images. A delicate folded-plate steel ladder efficiently bridges the two floors.

The bathroom is encircled by transparent glass panes to complement the visual limitation, leaving the exceptional space aggrandizement and consistency. Chiang says that when a living space is genuinely "liberalized" to an extent in which every substance transcends their basic existence, the housing can be a representation of time, emotion, and profound cultural spirituality.



Study room

