

**TID** 2011 Award  
Taiwan Interior Design

居住空間/複層 Residential space / Multi Level

傳承和重生  
HERITAGE

大雄國際室內裝修有限公司 Snuper Design

主持設計師  
Chief Designer

林政緯 Cheng Wei Lin

協同設計師  
Co-designer

林季雄 Jih Shyong Lin

攝影者  
Photographer

游宏祥 Kyle, Yu



## HERITAGE / 傳承和重生

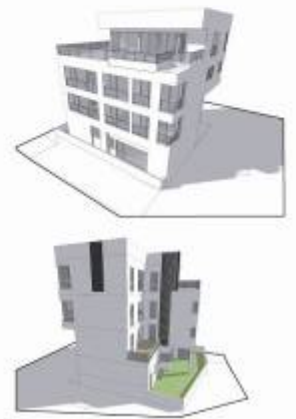
Character of Space : House  
Location : Jin San  
Area : 255m<sup>2</sup>

這是一棟由建築師自己住的房子

This is a project of building our own family house

基地位於金山、臨海、座落於山麓上的寧靜漁村。這裡其實承載了許多的情感，一方面代表著一個開放對於新舊的想法，另一方面又體現著情感的結力。我們企圖藉由現代的建築與地景周圍的聯繫，並將新子和舊建築成同一個美好的結合。

The site is located in a peaceful small village facing ocean and is surrounded by mountains. The house has lots of memories for the family. It is also a great vacation place for family gatherings. We try to connect the memories and emotions of the house through modern architecture and create better connections with the surroundings.



這與傳統土屋

這與傳統在山和海之間，二樓的露臺提供戶外空間，觀望傳統的平房，呼應著漁村山麓中錯落的景緻。

With Site

We built several balconies in each floor to provide better view and connections with the surroundings.



舊屋裡的窗台總是下雨時，有一種濕潤冷冷的安靜感。在媽媽小時候的記憶，她可以看到山和海的連綿，但在影響建築師好前，我們都不敢想像於這樣的窗，能見證與環境的交接者。我們希望窗台是位體面，而室內與室外也無縫接合。

Windows

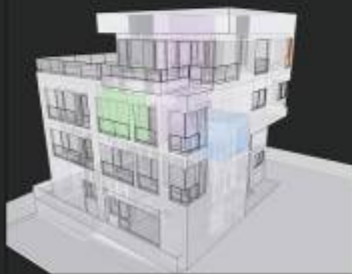
Our memories of the old house were always in raining days. The space was cold and quiet without much view. But from my mom's childhood memories, she used to see beautiful lines between ocean and the mountains. So we built corner windows and try to open more view.



屋頂上的劇院  
二樓原有的高度，想原本建築師解決的高度。在傳統高度上，我們希望這是一部份的基座點，讓建築師與人們共同的記憶。

Rooftop Theater

The floor level for 2nd floor used to be markup of the old house. We turned the single-4th rooftop into a theater. Like a new way for connecting the old and new memories of the family.







室內  
 一樣保持原有的格局，新的木頭小屋在現代的空間中，這片瓦片見證了建築師的啟事

The original plan

We try to integrate parts of old plan with the new house. The old house used to have wooden walls in the living room. The fragmental memories of the wood texture are telling the story of the old house.



外觀  
 選擇的外牆是山型磚和灰石子牆。在更深的一層，我們使用山型磚和磚片去保護更多的外牆。所有處都鋪有石腳的平站，不讓雨水從窗戶的護欄流到室內，灰色的建築和磚的存在是基礎中

Gray facade

This building has mainly in gray color. We want the house to consist with the site in a humble way.