

TID 2011 Award
Taiwan Interior Design

居住空間/複層 Residential space / Multi Level

靜觀
Quietly Observing

尚藝室內設計有限公司 Shang Yih Interior Design Co., Ltd.

主持設計師
Chief Designer

俞佳宏 Alan Yu

協同設計師
Co-designer

王家榆 Kim Wang

黃思瑜 Sylvia Huang

陳玉瓊 Joyce Chen

攝影者
Photographer

岑修賢 Sam Cen



静觀 Quietly Observing.

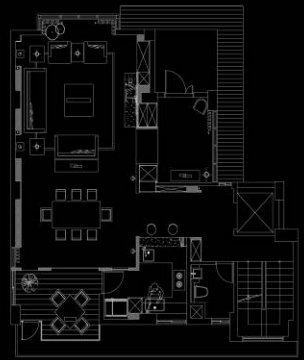


Symmetrical esthetics



結合優美的庭園景觀設計，終日綠蔭環繞的靜謐花園別墅。從一進門開始，兩兩“對稱”手法的應用，與材質特色，和諧分割的比例相輔相成，利用對稱牆體的曲折美，婉轉拉出中軸的平衡感。在客廳，餐廳等公共空間，整合地坪分配與樑柱位置，在不同連續面打造簡潔卻充滿結構力道的對稱美學。

A garden villa embracing beautiful gardening design, quietly surrounded by green shadows all day long! Upon entering the house, the employment of "Double-symmetry" and the distinctive materials, harmonically divide the space in good proportion. use symmetry wall to connect the balance of central line. In such shared space as living room and dining room, the beams and pillars are nicely integrated into the setting without sacrifice the space which can be utilized, resulting in symmetrical esthetics full of power.





The doorway in the basement

地坪以灰色系鋪銅磚象徵空間屬性的轉換，走進鐵件玻璃門區隔的入口，通到左邊是簡潔的吧台區設計，天然石材精工打造的結構，展現自然感與極簡的線條之美。透過空心磚搭配玻璃磚作為隔間的緩衝地帶，走進低調前衛的視聽室，各種灰階材質鋪陳的內斂質感，整體優雅的場域魅力，任何時刻都能讓人深切體會生活本質的美好。

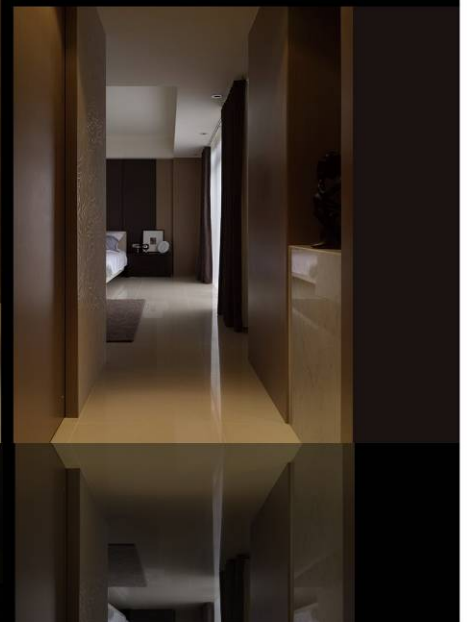
The switch of the ground tone to gray indicates the change of space. After going through the glass door framed around by iron, you will see a simple bar on the left. Carved out of natural stone, this bar presents its natural beauty. The hollowed bricks couple with glass are here to build up the Audiovisual room next to it. Each gray color material makes its feel clam, and elegance. Being here anytime, you will come to the realization that life itself is wonderful.



Bedroom

牆面使用清雅的木色與細膩工法，營造頂級飯店的精品質感，對稱分割的床頭造型以繡布塑造沈穩意象，床尾安排灰玻與視聽牆穿插其中，更能呈現虛實的美感。

By applying the elegant wood element to the wall, the quality of a top 5-star hotel is successfully brought out. Symmetry bedside use Stretch fabric to make its calm, the end of the bed use gray mirror in the TV wall, makes its feel Actual situation.



Living room & kitchen

客廳的洞石主牆居中，左側穿插輕盈的灰鏡立面，平衡石材厚重與過道間的虛實，餐廳旁的一道假柱輔助界定空間層次，無形中也讓窗前景觀區賦予景深迂迴的魅力，透過這些精心佈局的量體分割比例，傢俱的大小，形式，擺設，巧妙掌握大空間中的分段層次，產生虛實趣味。

開放規劃的餐廳與客廳呼應對稱軸線，利用材質，比例，造型，勾勒畫面的乾淨質感，對比卻和諧的處理，營造豐富與內斂的衝突之美，刻意簡化的空間背景，剔除多餘的色彩與繁複的裝置技巧，讓大片落地窗的綠意，為視覺帶來出色的借景效果。

TV wall use the hold marble, and the left side with gray mirror to balance the heavy stone, the fake column make the layers in the dining space, and its makes the window view depth of the field, by these furnitures proportion and makes layers in the space, and it will be fun.

Open space of living and dining room on the central line, we use material, scales, modeling to make cleaning feeling, contrast with the harmony to build restrained beauty of conflicts, simply the space, Remove the excess color and complex device techniques, make the green into the big window, to bring outstanding visual effects.



以餐廳為端景的廊道形成為空間軸線，巧妙配置吧檯與書櫃形成生活軸心，使原本單純的廊道更添生命力。

Dinning room is the axis in the end of the corridor, Clever configuration of bar and bookshelf become the axis of our life. It makes a simple corridor to vitality.

