

TID 2011 Award
Taiwan Interior Design

居住空間/複層 Residential space / Multi Level

深邃寧靜
Tranquil House

金湛室內設計研究室 goldesign studio

主持設計師
Chief Designer

凌志謨 lin chih mo

協同設計師
Co-designer

林瑤萍 lin yao pin

攝影者
Photographer

游宏祥 Kyle Yu

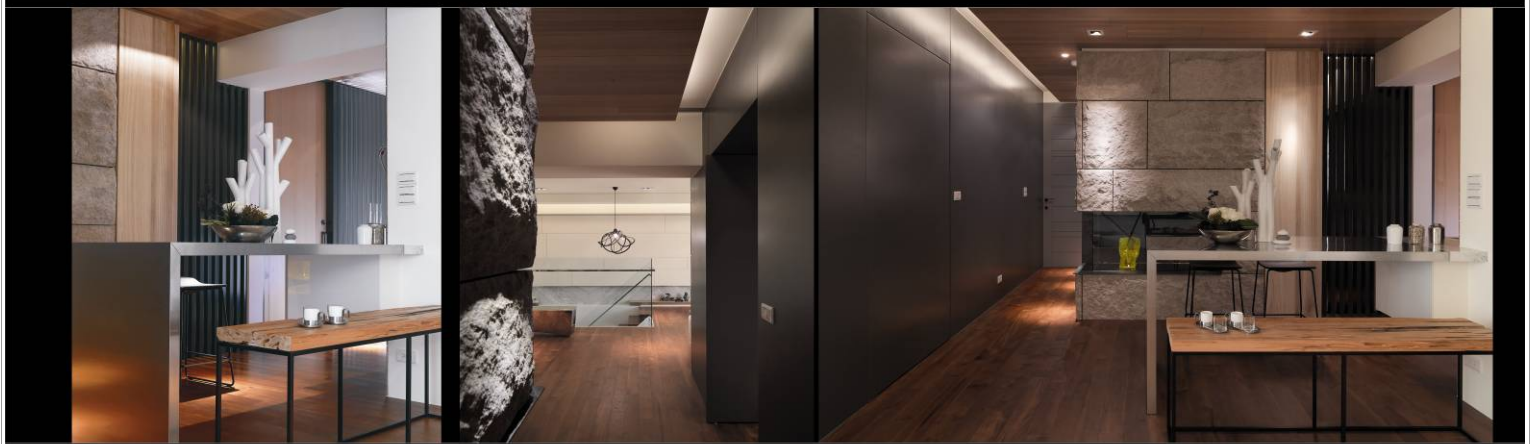
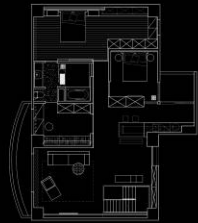


Tranquil House

展現自然的低調美學為設計主軸,無論在設計式樣或建材配色,都以自然寧靜為出發,所以協調之美,循序漸進的由低樓層至第二樓層,空間主軸依然以深邃的寧靜由然直上,雖然兩層樓用色與風格不同,但經過垂直動線的過度中介,心境早已慢慢轉換得更為放鬆。

兩層樓的風格反差,我們將它視為協調之美,風格的迥異更而達到反差美學,不再是對比感,而是合乎使用者心境,情感的協調空間,兩層樓以一種無阻礙,無接縫的空間規畫,讓視覺透過幾乎無阻礙的樓梯上下延伸。

質樸的石頭仿壁爐灶造型為二樓視覺焦點,空間的背景,讓前方的吧檯區達到家庭凝聚的談天說地區塊,輕鬆的或坐或臥,和諧的寧靜生活感在此愉悅的展開,第二層樓的電視牆是由萊姆石組成,預留的企口讓石材堆砌感更為明顯,沙發後方的銳角原木切割,讓傳統意象的亞杉實木更顯時尚。



Demonstrate natural and low-key aesthetic as the primary axis of design. No matter if it is with mode of design or color matching of construction materials, it is conducted upon serenity, so that the beauty of harmony will turned gradually from low-level story to the second floor. Besides, the axis of space will remain with profound serenity as moving onward. Therefore, though the color and style of the two floors are different, atmosphere of mindset has, through the transition intermediary of vertical line of movement, slowly transformed into even more relaxed.

The contrast of style for the two floors has been considered as the beauty of harmony by us, while the difference of style has even reached the beauty of contracts rather than mere comparison. Even more, it is reckoned to be of the space of harmony that accommodates to the mental context of user as well as their emotion. Thus, the two floors have been conducted with a barrier-free and seamless space programming, so that vision can be extended through the almost unbounded stairways upwards and downwards.

TV wall at the second floor is established with limestone, while the tongue-and-groove left in advance will help making the sense of stones piling even more prominent, and the acute angle with wood cutting at the back of sofa has turned the traditional image of cryptomerioides Taiwanica to become much more fashionable.

