

**TID** 2011 Award  
Taiwan Interior Design

居住空間/複層 Residential space / Multi Level

One

芮馬設計工作室 Rainmark Design

主持設計師  
Chief Designer

謝宇書 Rain Hsieh

攝影者  
Photographer

郭昭明 GUO,ZHAO-MING



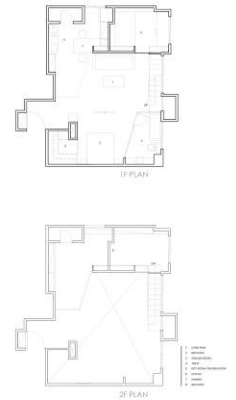
## 顯空不二

The nature of a heart is peaceful and equanimity but also blend in endless desires It's like a purely white space and the rich lighting from the night. Happiness and sadness are only symbols, temporary and illusionary reflecting on the white wall

心的本質是平靜空寂,如純白的空間  
卻又能融入無限的慾望。

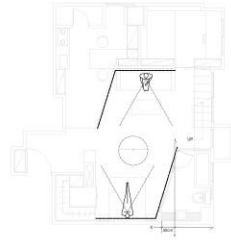
快樂和憂愁是表象,  
如夜間豐富的燈光只是暫時虛幻地打在白色的牆面。

## ONE



去除擺飾與色彩變化的干預,純粹地展現空間的層次變化,就像是把音樂遞給耳朵,拿掉視覺等多媒體的掩飾,用最嚴格赤裸的方式檢驗空間。

Remove the interference from interior decoration and the changes of colors; purely display the changing level of the space.  
It's just like returning music to the ears, remove the cover from multimedia vision, exam the space strictly and nakedly.



空間中置入的平行系統,使得以電視為中心的主臥和沙發區都有開闊的視野,同時亦增加了浴室檯面的寬度,提高了使用坪效。

Implementing lining system in the space, while the TV is the center, it widens the horizons of the master bedroom and the couch section. It also increases the width of the bathroom counter and the efficiency of the usage.



用壓克力的材質來表現樓梯踏階是冰塊的意象

By using acrylic to represent the stair steps is the meaning of ice



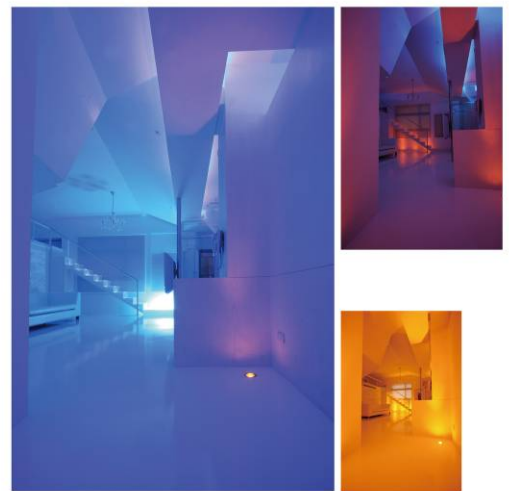
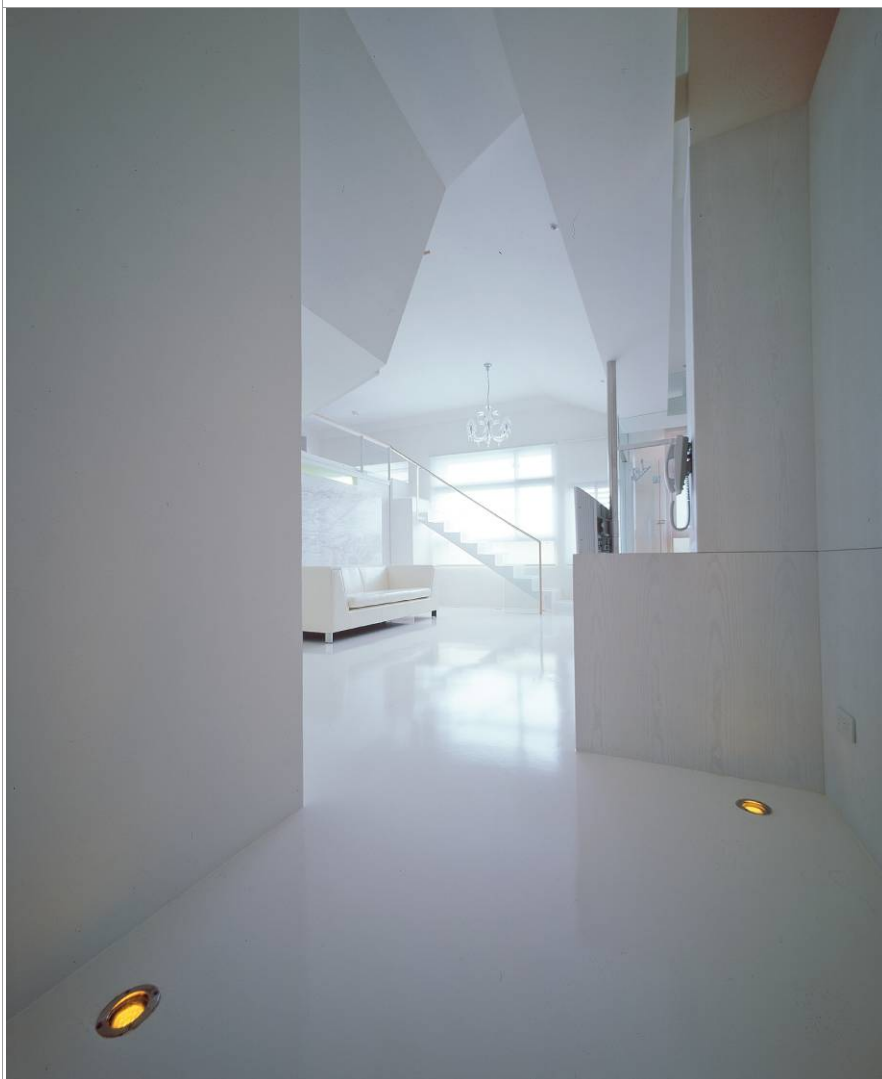
The nature of white has never changed, it's like the nature of the heart will not change just because of the worries or the temptation at the moment

It's like a mirror which reflects different colors. When white arrives, everything returns to purely peaceful



白色的本質未曾改變,就如同心的本質不會因煩惱或暫時的誘惑而改變,只是如鏡子反映出不同的顏色。

當白天來臨,一切又回歸於純粹的平靜。



Because of this, a purely white space is the metaphor of a heart  
The intension of the heart is to reveal unity

由此將純白的空間比喻為心,心的作用是顯空不二