

**TID** 2011 Award  
Taiwan Interior Design

居住空間/複層 Residential space / Multi Level

青山|映景  
Blue mountain in reflection of scenery

近境制作設計有限公司 DESIGN APARTMENT

主持設計師  
Chief Designer

唐忠漢 T.T

協同設計師  
Co-designer

陳逸凱 Beck Chen

攝影者  
Photographer

岑修賢 Sam



## 青山 | 映景

Blue Mountain in Reflection of Scenery



此山之中

空間

體現—時間的軌跡

體現—季節交替渲染

體現—生活需求的互感

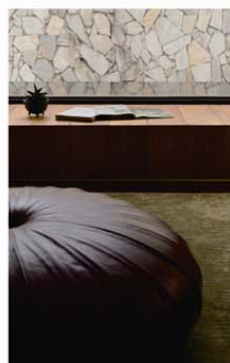
Within such mountain

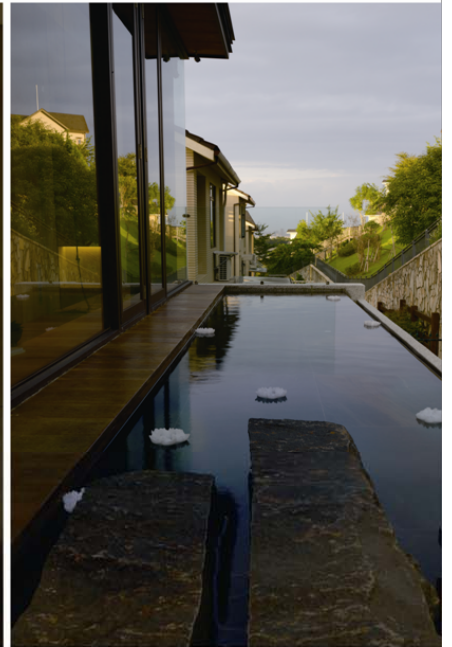
Space

Realization—track of time

Realization—exaggeration of seasonal changes

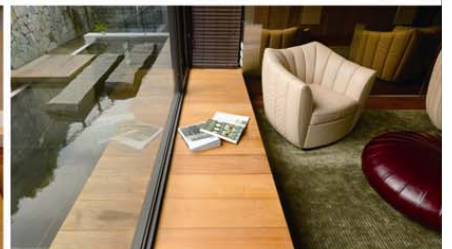
Realization—five senses of life needs





循階而上，有如懸浮水岸的閣樓  
山・林・景 隨四季渲染  
伴隨日時，光輝，夕陽映照在窗台清澈的池畔，模糊了邊際  
重新定義人為天地造物的自然情懷

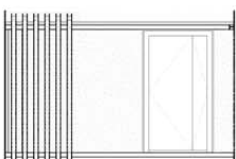
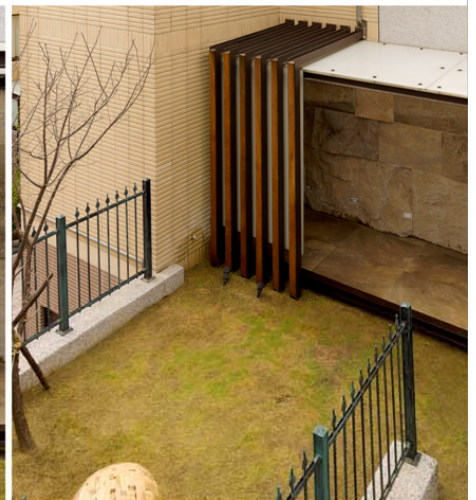
Going up wards after the stairways it is like the penthouse  
flowing up on the coast・Mountain, forestry, and scenery  
will smear upon after seasons・They are being accompanied  
by day-light, brilliance, and sun-set as reflected on the clear-water  
pond by the window・Thus obscure the borderline, and so re-define  
the natural sentiment of Mother Nature in creation for mankind







1FL



沿階梯而上的前院，形塑出猶如磐石般森嚴穩重。  
大面採光落地玻璃，將後院天光引入室內。  
開放空間之中，食、藝、樂等活動在空間中相互流動。

Front courtyard meanders upward with stairs, it carves out such solemnity and stability as of huge rock.  
French windows of grand size for light has introduced aerial light from backyard indoor.  
Among open space food, art, entertainment and other activities flow mutually between each other within the space.