

**TID** 2011 Award  
Taiwan Interior Design

居住空間/單層  
Residential space / Single Level

Residence Purity

Mon Deco

主持設計師  
Chief Designer

楊勇 Leo Yeung

協同設計師  
Co-designer

張凱茵 Athena Cheung

攝影者  
Photographer

N/A

# Residence *Purity*



*Exquisitely chic wavy lines have been designed for the flat to present a 3D profile which is permeated with an air of tenderness. Designer has entirely re-structured the layout to suit the specific needs of the owner. An aesthetic sense of gorgeousness and modernity is created. The sense of roominess within a limited space is made possible applying different solutions to different situations, namely the use of lightings, colors and mirrors; demolition and merging of space; the use of bay windowsills; the use of visual and focus-shifting effects. With such combined efforts, a uniquely stylish luxury apartment was born.*

# Residence *Purity*



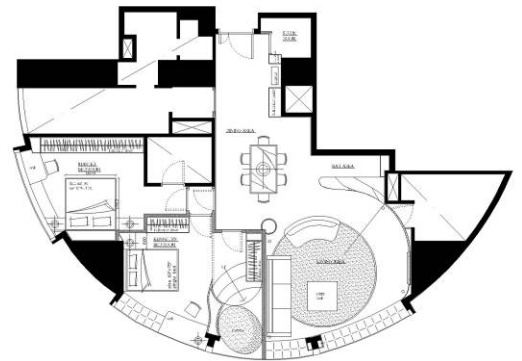
*To achieve an effect of roundedness in partition and harmoniousness in the overall setting, the TV wall was intentionally built as a slightly curved wall matched with two sets of respectively gray and beige-colored sofas to form a comfortable sitting area.*



# Residence *Purity*



*To parallel the TV wall, even the bar area was specifically designed on the shape. Producing such a huge piece of marble required separate parts to be assembled on site. Difficulty rested in monitoring the interface of those assembled parts. Perfection was required. The wall behind the bar was decorated with irregular arrangement of mirrors, refined and beautiful wall hangings to enhance a good sense of space.*



# Residence *Purity*



*The master bedroom was moved to another side of the flat and reproduced as a well-equipped suite, with efforts made to include a closet by incorporating a corridor originally leading to the guest washroom. A self-contained cozy master bedroom was created through the use of visual and focus-shifting effects. Avoiding the bed-against-wall arrangement was an effort not to make the room appear even smaller. Adoption of a classic master bedroom design with twin bedside cabinets left the space on both sides of the king-size bed uneven. The narrower side was cleverly placed closer to the bay window to create a more balanced effect. Dark-colored headboard and twin cabinets resulted in a unique effect of extended space. A white picture frame was inserted in the hollowed wall space above the headboard. A bright-colored oil painting now acts as the focal centre and with back light from behind, attention will be miraculously shifted. The bedroom is immediately transformed into a decent and self-contained new master bedroom.*



# Residence *Purity*



*As to offer both children a room of their own, while simultaneously ensuring that space in the daughter's room is well utilized, partition between the rooms was designed for flexibility and their privacy. The boy's room occupies more space: a writing desk and cushioned seats made out of the wide windowsill. False ceiling in the form of layered steps was designed to hide the beams, the room was enriched in visual effects. In contrast, the girl's room, smaller in size, adopts a flight-of-step design from floor to bed. The windowsill acts as the main platform for her bed. Bearing in mind the size of her room and avoiding the look of a cramped living space, a sense of playfulness in space became the solution. The bed platform was designed to appear oval in shape, which comes into complete harmony with the curved window contour.*

