

**TID** 2011 Award  
Taiwan Interior Design

居住空間/單層  
Residential space / Single Level

千里林宅  
「LIN'S RESIDENSE」

大騰室內設計有限公司 / 胡碩峯建築工作室 SHYR-FONG HU DESIGN STUDIO

主持設計師  
Chief Designer

胡碩峯 SHYR-FONG HU

協同設計師  
Co-designer

謝佩珍 PEI-CHEN HSIEH

攝影者  
Photographer

岑修賢 SAM SIEW SHIEN



- TAIPEI | 2011  
 - LIN'S RESIDENCE  
 - 千里林宅  
 - FA = 172m<sup>2</sup> / 52坪

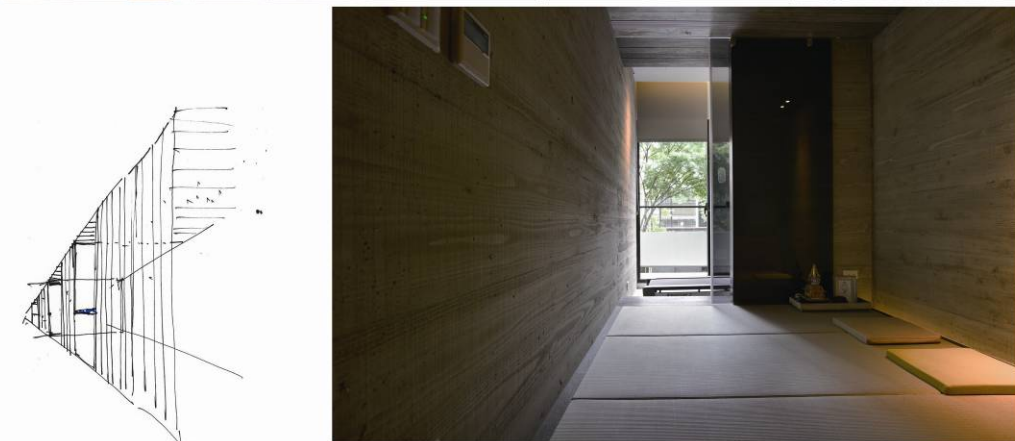


這是一個有著簡單機能室內住宅設計案，空間使用由兩位主人兼著五隻貓。然而，基地條件給予一個極佳的背景：位於二樓的高度，主要採光正面全面迎向一大片綠樹景觀。綜合以上兩件要素，在設計上提出一種把公共空間（傳統定義下的客廳、餐廳、書房等）規劃成自由平面的概念，幾道垂直、水平的牆面一方面界定了活動區塊，也變成各類收納空間，幾道牆面之間並且藉由暗門來作幾種不同的開啟，以管制主人與貓類在生活上不同時段的分離與聚合。這個「開放式平面架構」把各個牆面從主要外牆脫開、內縮，以讓出沿外牆的動線與連續性視覺，隨時可向外借景，一來強化了空間的延續性，也建構了整個平面配置最主要的核心意義。

另一個設計重點是「材料系統」，除了利用深色實木去界定主要的書房區與工作區的天花平面區塊，以及客廳主牆的材料之外，我們使用清水木模於睡房及主要浴室之牆面上，並且利用回收的木模板於其他部份牆面及抬高地坪上，也使用於幾個訂製的生活器皿（如小板凳、拖鞋等）。這個舊料回收材質與清水牆所展現的空間質感加上開放而延續的平面空間，與外在基地綿密的綠意整合而共構了一個極富趣味的綠色現代居住空間。



- TAIPEI | 2011  
 - LIN'S RESIDENCE  
 - 千里林宅  
 - FA = 172m<sup>2</sup> / 52坪



This is a residential project with simple yet practical living functions. Residents include two house-owners and five cats. The site offers a fantastic background: front façade facing tree views and the Sun light. Designer maps out the so-called public areas such as a living room, a dining room combined with working area into a free and open plan. A number of vertical and horizontal dividers not only define the living spaces with different purposes but also are embedded with storage functions. Hidden doors fixed into the aforesaid dividers allow house-owners to control the path and activities among five cats under different conditions. In tradition, interior walls are used to separate the overall interior space into different rooms. In this case of the "free and open plan" design concept, such interior walls are substituted by individual dividers to yield more open space. The interior open space alongside the exterior walls therefore offers a visual penetration. Outdoor tree views then complements such a visual illusion of grand scenery.