

TID 2011 Award
Taiwan Interior Design

居住空間/單層
Residential space / Single Level

隨心所欲
Un-bound

柏成設計有限公司 JC Architecture

主持設計師
Chief Designer

邱柏文 Johnny Chiu

王菱儀 Nora Wang

協同設計師
Co-designer

張芸眉 Amy Chang

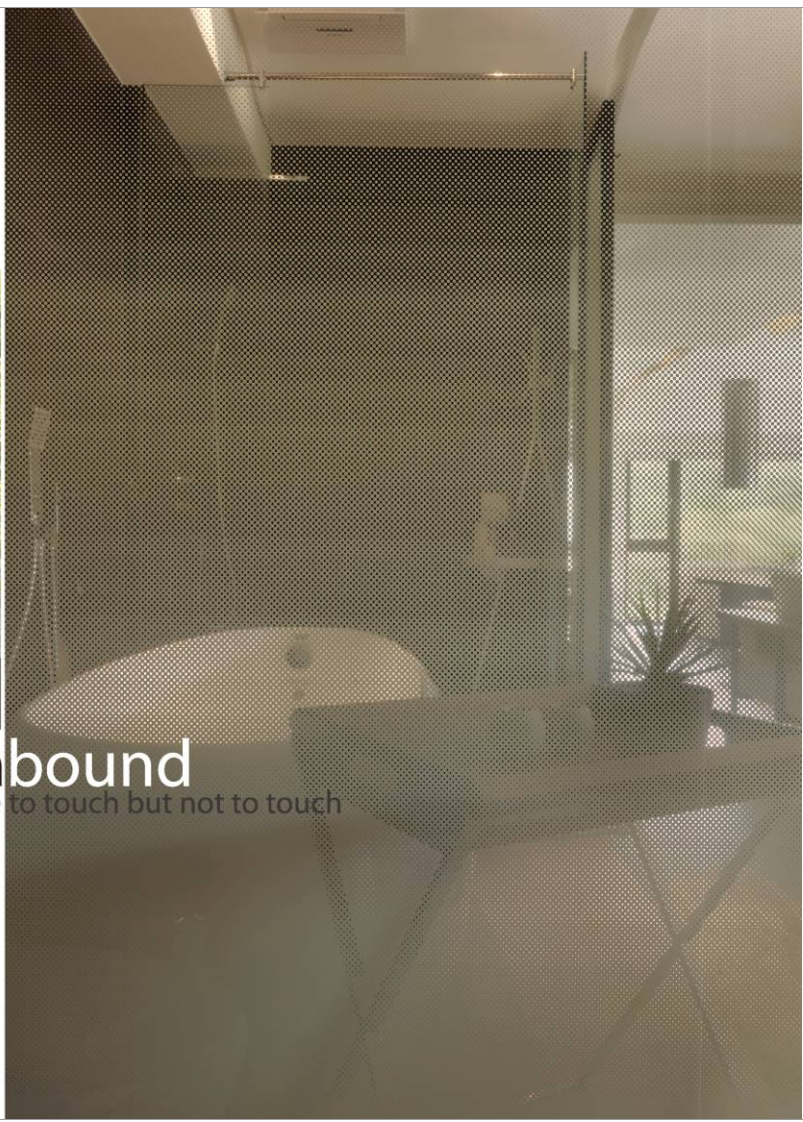
攝影者
Photographer

吳啟民 Kevin Wu



unbound

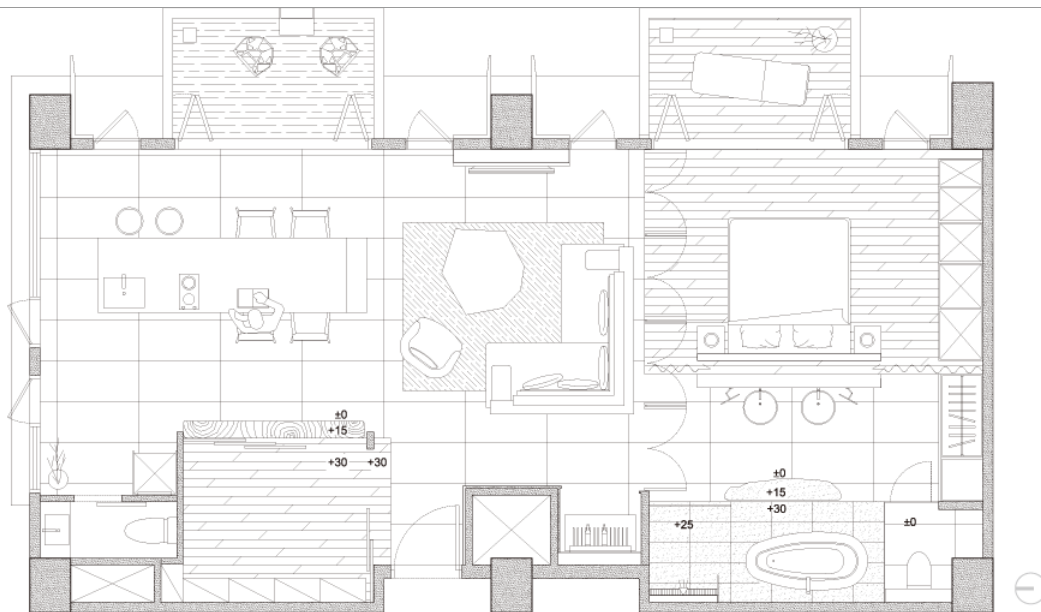
to see but not to see to touch but not to touch



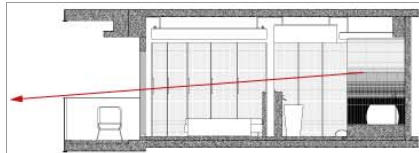
It's like living on a boundary, between nature, between human, between real, between imagination.



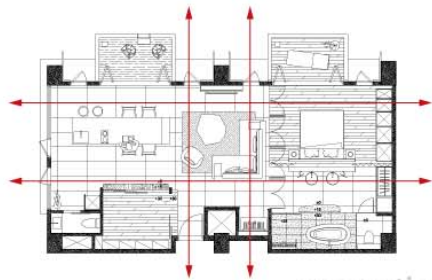
Sitting amongst the forest in the National YangMing Park, the site becomes the biggest inspiration for us, there isn't much we needed to do but to bring the picturistic setting inside.



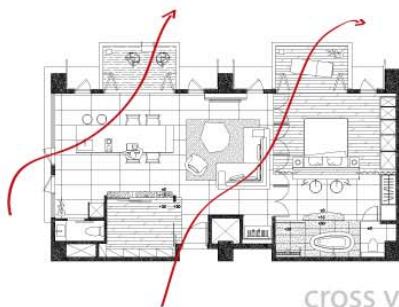
We completely open up the space, allowing movement to flow in between, spacial recognition is then defined by the furniture floating inside the spaces, as if it were sculptures inside the open air museum.



section



separation



cross ventilation



Movement

Free form, there is no guided path, what interests you will guide you to your destination.

Public

Spacial axial is been guided by the kitchen island, which also becomes the outdoor alfresco experience. The table becomes alit at night using the properties of the Corian stone so one can enjoy the gentle nature of the moon.



Private

Although private in nature, we design it so the residence can have the option of intimacy or public display (within their own property). The bed to the basin to the tub shares the nature of an auditorium, allowing the view and space to flow through while maintaining their practical needs.

Nature

From the materials of wood and stone, to the imitating of flow and chi, so from every angle, you are one self with nature.

