

**TID** 2011 Award  
Taiwan Interior Design

居住空間/單層  
Residential space / Single Level

簡約本質  
The essence of casual

金湛室內設計研究室 goldesign studio

主持設計師  
Chief Designer

凌志謨 lin chih mo

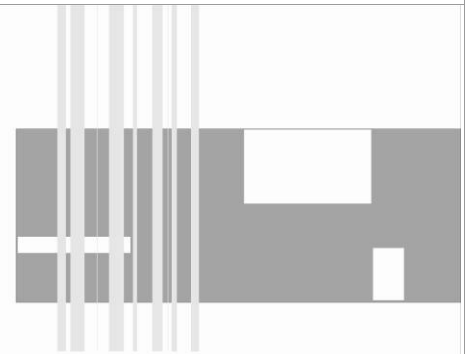
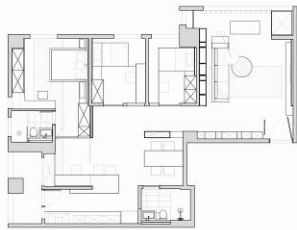
協同設計師  
Co-designer

林瑤萍 lin yao pin

攝影者  
Photographer

游宏祥 Kyle Yu

## The essence of casual



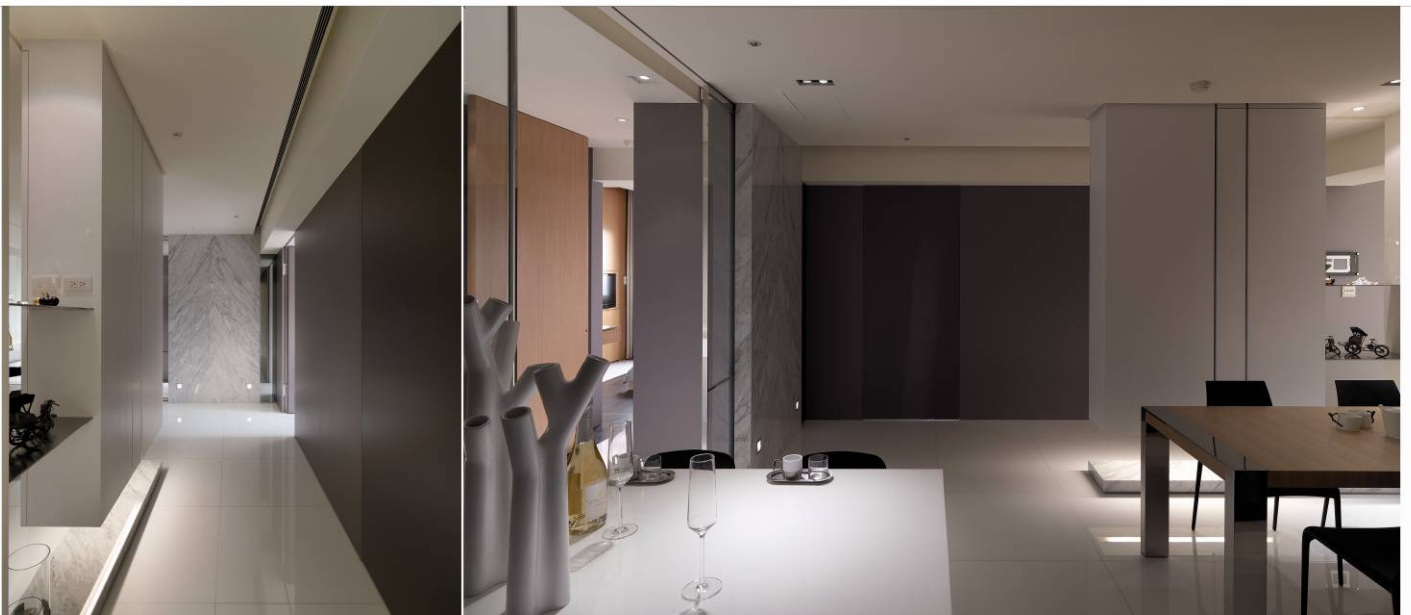
### Minimalist fashion plus function

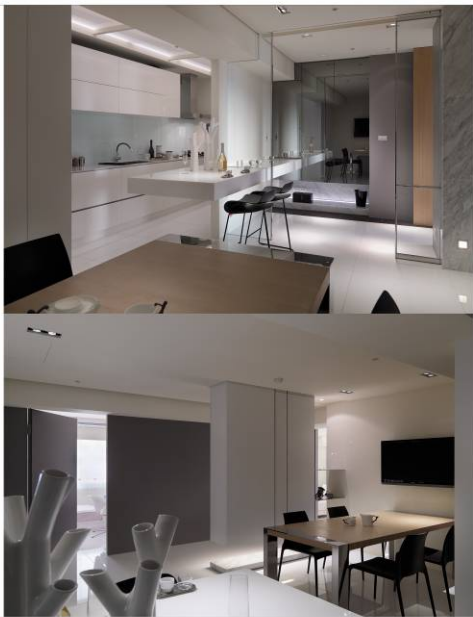
In modernism, it seems to be hard to fulfil 'minimalism' in every real living space. Because its precise space rules are difficult for people to follow. As a result, adding fashion and Nordic elements into minimalism makes space no longer cold but livelier and friendlier.



techniques of spatial design, using physical and abstract entity, and connector to create objective in every unit space:

- (1) Try to change the traditional kitchen from closed style to open style. The island connects the open space and kitchen, which integrates the kitchen and inner space, and creates a centre for family activities. Besides the back of the island has become the study room of the master bedroom. The space behind the big partition belongs to the master bedroom. Once it has been closed, it will be separated from the outside and keep privacy easily.
- (2) There are two entrance doors to the master bedroom: the wooden door can be seen as a physical entity and the stainless steel glass door as an abstract entity. These two doors define different ranges of space. The space is not fixed, and the overlapped space can be private or open.
- (3) The spatial circulation of the house has been reduced to the minimum, and the only circulation has been visualised to be stretched and lengthened as much as possible to enhance the impact of the approach. Besides, the display tells the atmosphere. The hanging cabinets separate the circulation and the kitchen without losing sense of space. They add more sense of transparency hence the space would not be divided too loosely.





■ 極簡時尚,機能並融

現代主義中'極簡'似乎對每個真實居住空間都難以實現,過於嚴謹的空間規則讓人們難以維持,所以在極簡主義之下加入時尚元素與北歐元素,使得空間不再冰冷也更顯活潑,當然就更平易近人。

■ 虛實中介空間手法創造各單元空間的自明性:

傳統封閉廚房盡可能的將其變更為開放式,懸臂出挑的中島為開放空間與廚房的 中介元素,不但讓廚房能與內部結合更創造出家庭的活動核心,另外中島的後半部變成是主臥的書房空間,大扇的門片繼而是主臥空間當關起時就能輕易隔絕保持私密性。

□ 主臥室的人口有兩進一 是實體(木作門) 一是虛體(不鏽鋼玻璃門),兩個門界定了不同範圍的空間,空間領域不再固定,重疊的空間變得可以私密可以開放。

□ 整戶的空間動線減到最低的狀態,並且將唯一的動線視覺化,盡可能拉直拉長,強化進口的效果,並由端景預告空間氛圍,懸空櫃分隔了動線與餐廳卻不隔斷空間感,懸浮的櫃體更增加了穿透感,空間不再被切割的過於零散。

