

**TID** 2011 Award  
Taiwan Interior Design

居住空間/單層  
Residential space / Single Level

光合陵動  
Photosynthesis of life

青埕空間整合設計有限公司 Clearspace Architecture and Interior Design

主持設計師  
Chief Designer

郭俠邑 (智國) Ryan Kuo

協同設計師  
Co-designer

楊桂菁 Kuei Ching Yang

攝影者  
Photographer

游宏祥 KYLEYU



煙塵美學 & 嚮生綠藝

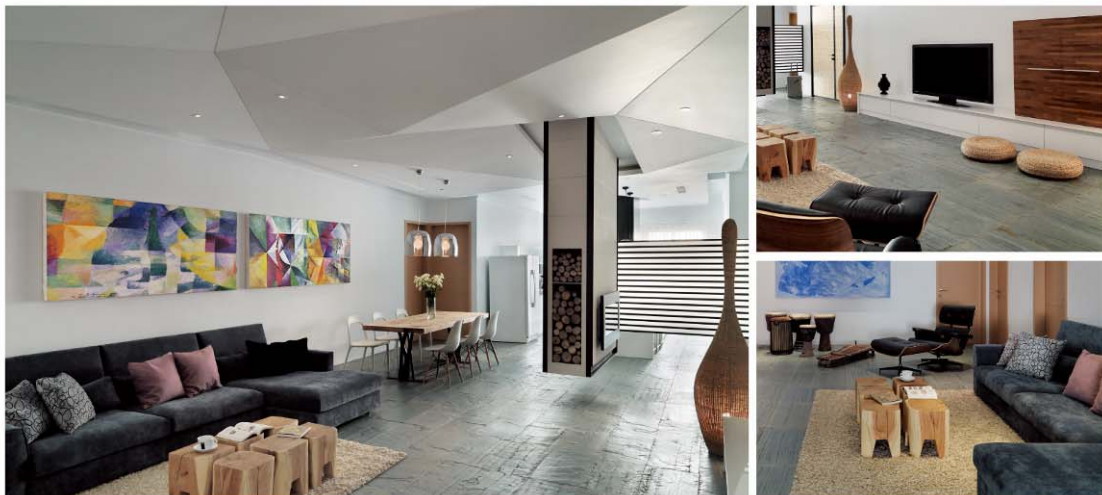
設計將空氣感概念作為出發點，結合光、影、聲音，對於環境的重新運用，以自然紋理與幾何疊積的概念手法，穿透與空間與環境的生活美學，呼應空間與生機的未来形式。設計理念強調：一個沒有過多裝飾的居所，才能讓空間自在呼吸！源自於設計的光合效應，在機能與審美的條件下，透過視聽、動靜的流動以及材質的介質處理，體現舒適的生活空間，親近視覺、聽覺、觸覺、味覺與嗅覺的五感體驗，享受生活空間所負載。

The designer starts with a focus on integrating the space and on marrying natural textures and features with a modern emphasis on geometric edges and open space. Through an emphasis on living comfort, the design echoes the future while maintaining clear roots in the present.

The design philosophy emphasizes simplicity, using a sparsely decorated living space to give the inhabitants free space for breathing! The use of natural woods and greenery adds to this relaxing effect.

Functionality and user needs lie at the heart of the space. While meeting those goals, the design also focuses on flow and integration of natural and synthetic materials to create a comfortable, inviting living space. Through an unburdened space, unique lighting, living components, and dynamism, all five senses are engaged!

光合陵動 Photosynthesis of life



入口以壁爐設計形成一個半玉壘階梯，動態視覺反應，大面積的窗面設計，在空間形塑最大的量感，仍與環境在室內又與戶外無阻溝通，線條的剛硬交錯於空間的動靜結合，給與一種輕鬆的居住享受這空間。其中幾面牆面都覆蓋，與空間自然和諧的相融，並以幾何感作為兩者使用上的標準界定，與該空間的相互靈活性，而使空間更有開闊的同時又能區分機能使用性。

One enters to a fireplace design that also serves as an entryway. Turning, one enters a large open space and a large window leading the viewer outward. Through the window, the designer added an outside living wall to connect inhabitants to the greater outside world. The overall view contains multiple staggered visual layers inviting one to either stop and rest or move further into the space. The layout allows individuals to relax and feel connected to the entire room, with a generous view of the primary living space. The kitchen including a large island, the design included no obstruction between the living room and kitchen. Instead, the two spaces are separately solely by a long dining table and two lamps. This allows for a visual overlap between the various living areas, allowing for an expansive feel while still maintaining distinct functional components.

光合陵動 Photosynthesis of life



幾何斜面的破綻(天)呼應著湖般的波光瀾灩(地)  
 天花板以幾何斜面的線條轉折表現，光線、空氣、聲音，被線在空中種種的流動變化，有消延和引導的功能，讓整個空間更有層次感。地板材質採用西交鋪板岩，自然、天然的石頭紋理，讓整個空間增添了質樸綠的野興，也呼應了室內室外的歸然綠意。

A geometric bevel face in the ceiling of the main living area injects a contemporary feel into the space. The uneven, layered ceiling creates unique shadows, angles for light, and moves both air and sound in unique ways. By including a high level of both indoor and outdoor lighting, plus much ventilation, the flow of light and air interact to create the feeling of motion.

光合陵動 🌿 Photosynthesis of life



主臥室以特色為基調，搭配淺木色系讓空間展現出溫馨質感，在柔和與中端空間呈現出放鬆、恬淡、休閒的自然氛圍。開放式的衛浴設備，讓整個空間開闊舒適；在純淨的空間中，展現輕奢的流動感，心靈是沉靜的幸福感。  
 The master bedroom emphasizes a brown tone. With many wood colors, including a retro-brushed texture, the room projects a warm, embracing quality and a relaxed, enjoyable and natural atmosphere. The open bathroom adds to the sense of open space and functional comfort. In the pure space, the sleek, graceful visual make the mind calm and happy.

光合陵動 🌿 Photosynthesis of life