

TID 2012 Award
Taiwan Interior Design

商業空間 Commercial space

炙廢料。鑄靈魂
Scorching waste; Casting soul

雲邑室內設計
YUN-YIH DESIGN COMPANY

主持設計師
Chief Designer

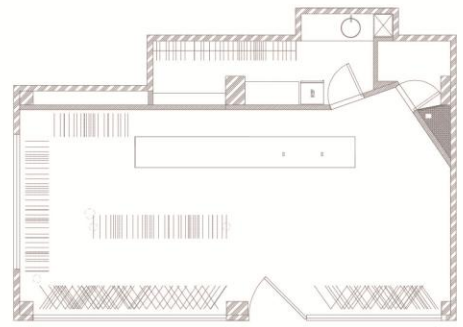
李中霖 Lee Chung Lin

協同設計師
Co-designer

李嫚郡 Lee Man Chun

攝影者
Photographer

楊天行 Ivan+Yang Photography



Continuing the Eco friendly theme,
this boutique uses a simple
concept in its space distribution.

延續環保&節能議題

作為場景串連與視覺符號的本案，
是一處風格鮮明的潮衣賣場，
基地的空間分配其實很簡單，

主要的設計概念：

可分為材質應用上的無聲語言，
以及特定裝置表述的機能、意象分區展演。



炙廢料。鑄靈魂
Scorching waste; Casting soul

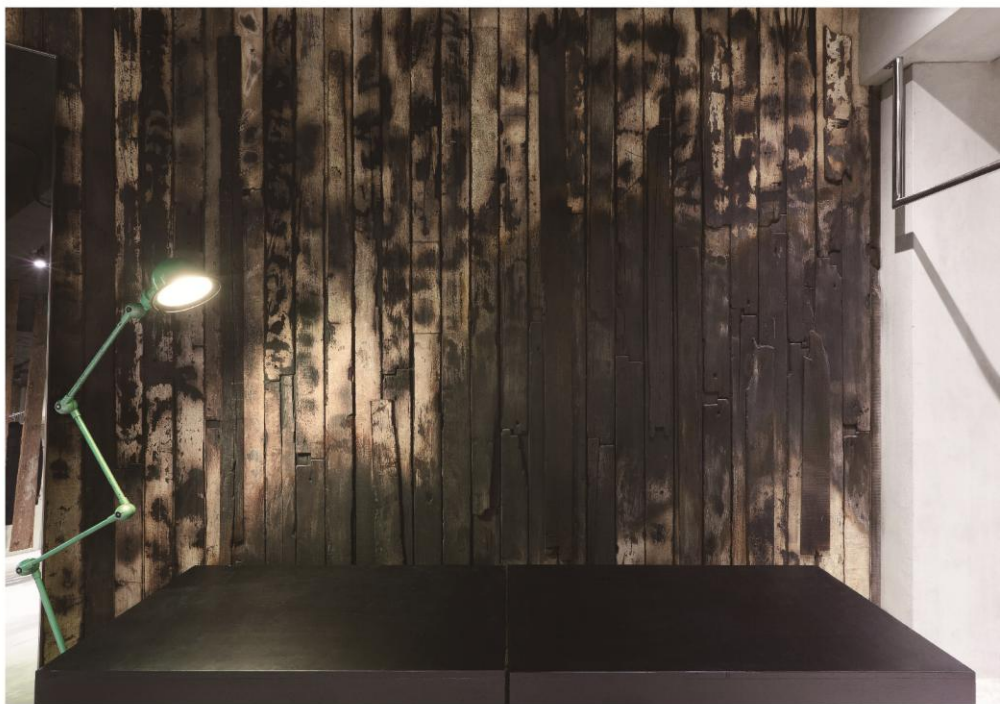


Separating the street and the boutique,
the French windows and simple concrete wall create a closet effect,
which half reveals its content,
drawing pedestrians to take a closer look.

面外的騎樓與建物邊界，
同時也是以原有落地窗改造而成的櫥窗序列，
利用簡樸的水泥結構凸顯部分櫥窗下壓的景框設計，
與原尺寸大櫥窗形成開與半開間的趣味，
微妙引誘路人向內窺探的慾望，進而落實行銷目的。



這個商空個案，是我們這段時間以來，同性質主題的第三回合創作
This project is our third creation of its kind.



基地以橫軸開展的面寬裡，空間周邊以大量廢板材，
水泥砌成的櫃檯是唯一的機能實體，經不規則的炙蝕、煙燻、炭化處理，
地面則是水泥加上 epoxy 的混搭質感，帶點手作的溫暖沉味。提煉出材料本質與原貌

The flooring is cement mixed with epoxy

The walls are made with waste boards that were scorched, smoked or carbonized.

對話空間一隅倒掛的森林意象，兩者糾葛之間精彩勾勒迷宮趣味，
而完全不加工修飾的原木柱，
兀自漆黑天花板錯置垂掛，
讓不同的高低落差與粗細的個體間，部分融入實際的支架機能。

Along with the tree trunks draping from the ceiling, a maze like forest is created.



俐落耀眼的不鏽鋼材質與
水泥的冷、火燒板材的熱、原木的沉三者，
彼此鮮明的衝突反差，
恣意烘托稀疏點綴其間的精緻服飾，成就一種令人印象深刻的裝置藝術。

The chill of stainless steel, the heat of scorched iron, the stillness of wood.
The conflict and contrast of the materials are sprinkled
with the couture threading
throughout the boutique, creating an impressive installment art.



顛覆、反其道而行、本質還原，是我們以此案發聲的重要概念，

好比不再進行多層加工、反覆的材質堆疊，而是透過燒蝕突顯自然木料不加修飾的美，而總是從地表往上長的樹木，這回換了個伸展方向，同時又能與吊架實用連結，發展出更深一層的省思與趣味。

Subversion, going against the flow, and going back to the essence of things is the concept for this project.

For example, instead of going through numerous manufacturing processes and layering of different materials, we highlight the natural beauty of the lumber by torching the surface; tree trunks that naturally spring out of the ground is reversed, and connected in a practical way with the hangers, giving it a deeper layer of thought and fun.