

TID 2012 Award
Taiwan Interior Design

展覽空間 Exhibition space

台中大雅廚具總部大樓
TAYA HQ BUILDING

大牆演繹設計有限公司.胡碩峯建築工作室
Shyr-Fong Hu Design Studio

主持設計師
Chief Designer

胡碩峯 Shyr-Fong Hu

協同設計師
Co-designer

張耀文 Y. W. Chang

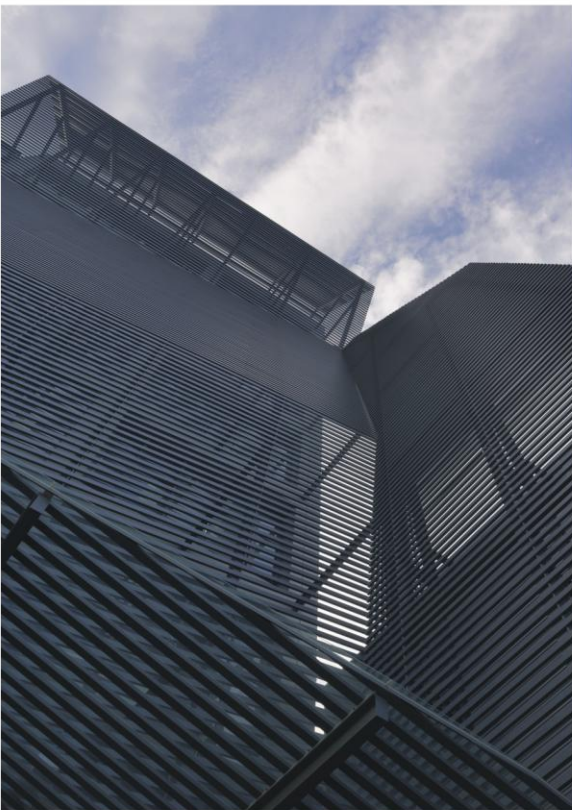
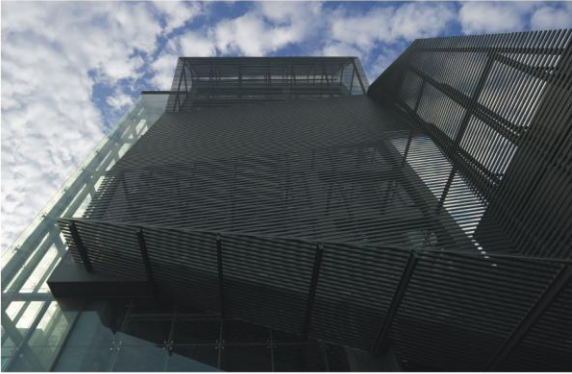
紀宜成 Y. C. Chi

攝影者
Photographer

岑修賢 SAM



- TAICHUNG | 2012
- TAYA HQ BUILDING
- 台中大雅廚具總部大樓
- FA=3300m²/998坪

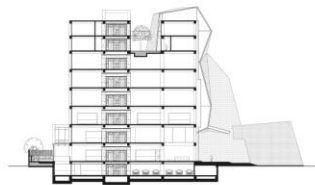


「基地與機能」

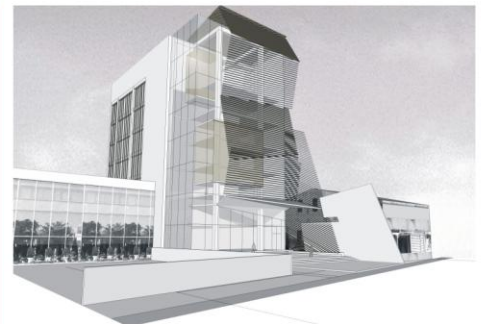
本案基地位於台中中清路高速公路交流道附近，缺乏明顯之都市涵構關係，而較多台灣城鄉車流幹道流經之粗曠意向，因此，如何建構建築物自身之自明性與地標性格乃成為一種可努力之目標。機能上，地面層與六樓頂層各為廚具及傢俱用品之展場空間，位於中間樓層則規劃為辦公空間。

「建築外觀」

首先以規格模矩化之樑柱系統構建物之主體空間，繼而，以4 × 8公分之空心鋁管作為主外牆材料，以不同折面之連續性立面牆面，形成強烈之雕塑性格與都市節點意向。立面折面於屋頂層折入預留之頂層中庭，形成一種動態之空間感，鋁管格柵除作為正立面朝南向之遮陽板外，另外，光影之變化亦使建築不斷在光與影、實與虛、明與暗之間產生不同時段之都市表情。



MAIN SECTION

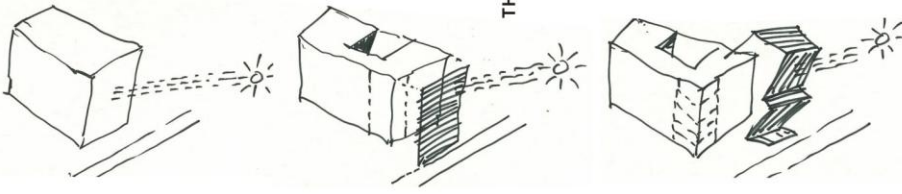


ORIGINAL 3D MODEL

THE PROGRAM

THE SUN-FILTER & THE ROOF SUNKEN

THE SCULPTURAL FORM



- TAICHUNG | 2012
- TAYA HQ BUILDING
- 台中大雅廚具總部大樓
- FA=3300m/998坪



THE URBAN VIEW

「室內空間」

室內空間部分，自一樓、夾層到二樓被規劃為具「公共」性格的開放型展示空間，讓這些樓層彼此有著連通的效果，而非三個沒有連貫性、阻斷的樓層。不同樓層之間以挑空銜接一座串連三個樓層、富雕塑性的垂直動線，如雕塑般的樓梯被刻意放大，並成為內部空間的視覺焦點之一，更為整體空間帶進豐富層次。當陽光照射時，光線穿過表層格柵灑進室內，豐富的光影變化使樓梯本身一如建築本身雕塑般的效果，同時，人工光源利用牆與樓梯間的凹縫做出不規則的光帶，強化了空間的雕塑性。室內空間採用了低調的背景色系，以水泥板的灰、淺灰、深灰或金屬黑為主色調。在一樓大廳透過一個自由平面架構，讓所有隔間內牆像是在室內空間裡脫開皮層，獨立存在著，呈現了如美術館般的自由流暢感。每一樓層也可向外借景，強化空間的延續性。

「材料系統」

本案由於面積龐大，在材料系統上儘量使用經濟並可大量使用，以及耐保養等特色為主，並減少油漆之使用量。地坪與主要牆面以水泥粉光為主，搭配PVC耐磨地坪及美耐板塊狀天花，顏色以突顯工業化質感之灰與深灰為主，塑造沉穩之辦公空間及展場。



7F



6F



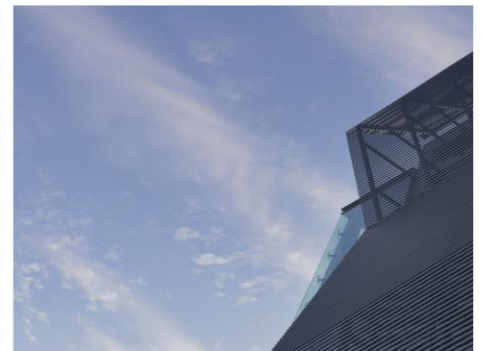
2F

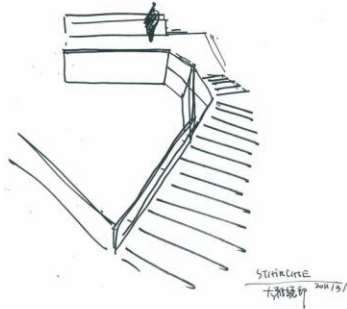
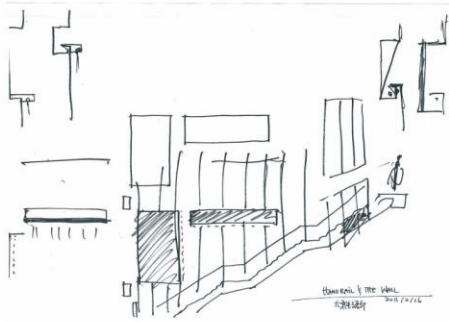


MF

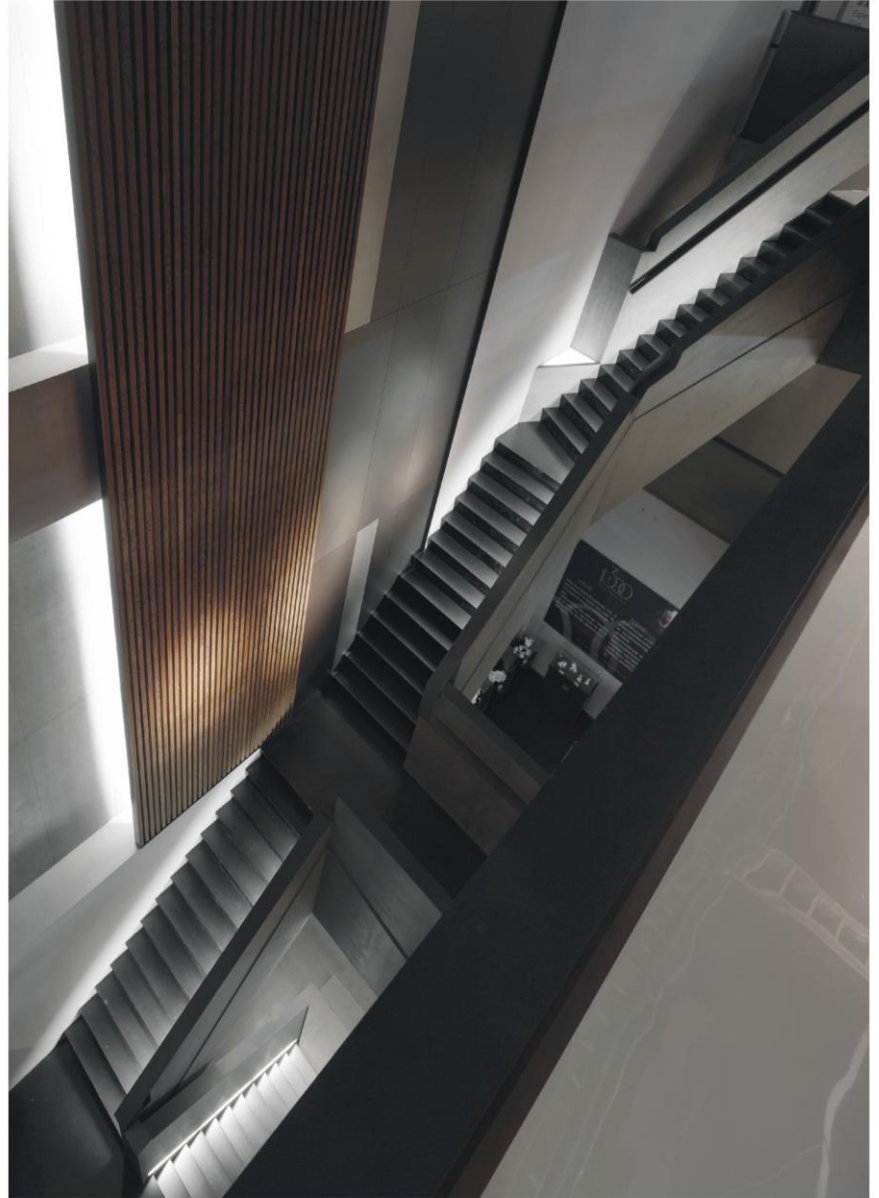


FLOOR PLANS 1F





- TAICHUNG | 2012
- TAYA HQ BUILDING
- 台中大雅廚具總部大樓
- FA=3300m/998坪



「Site Location and Functions」

The kitchen systems distributor is situated near the intersection of Daya Interchange of National Freeway No. 1 and Chung-Ching Road of Taichung City. Because the site is closer to the rural district, the goal is to build a landmark in this non-urban area. A kitchen systems showroom is set on the ground floor and a household appliances showroom on the top floor. The floors in the middle are reserved for office space.

「Building's Exterior Appearance」

Standardized beam-column modules comprise the building's major structure. Aluminum tubes measuring 4x8 centimeters are horizontally aligned to constitute exterior walls. The walls, like sloping hills, continuously bend into different angular shapes to create sculptural looks. The southward facade bends inward on rooftop where an atrium is reserved, thus bringing a dynamic visual effect. While serving as a sunshade, the frontal aluminum grating admits light and the shifting light changes the building's appearance.





GRAND STAIR

- TAICHUNG | 2012
- TAYA HQ BUILDING
- 台中大雅廚具總部大樓
- FA=3300m/998坪



「Building's Exterior Appearance」

The ground floor, the mezzanine and the second floor are not stand-alone. The floorage is receded to make room for 「emptiness」, thus forming a penetrating visual effect. This invisible passageway perpendicular to the ground connects those three levels. Staircases are crafted like a sculpture to become a focal point. The aluminum grating admits light and the shifting light brings multiple looks on the staircases. Artificial illumination casted at the space between walls and staircases creates brightness in various degrees. Cement-grey gradations and metal-black tone constitute the subtle background hues. The partitions are erected like art pieces in the spacious lobby with a museum atmosphere. Outdoor views can be introduced indoors on each floor while the vast indoor space can also be extended outdoors.

「Building Materials」

Massive materials used in this big building are cost-effective, abrasion-resistant and dirt-proof. Use of paint is minimized. Stucco finishes cover the floors and interior walls. Floors are made of abrasion-resistant PVC materials and ceilings plastic laminates. Cement-grey gradation symbolizing a city jungle is the major interior color that renders a calm ambiance for work and merchandise displays.

