

**TID** 2012 Award  
Taiwan Interior Design

臨時建築 Interim Architecture

國泰璞匯接待中心  
The PUHUI Reception Centre

周易設計工作室  
JOY Interior Design Studio

主持設計師  
Chief Designer

周易 CHOU, YI

協同設計師  
Co-designer

吳佳玲 WU, JIA-LING

攝影者  
Photographer

呂國企 LOU, KWOU-CHI



# THE PUHUI

國泰璞匯接待中心  
THE PUHUI RECEPTION CENTRE



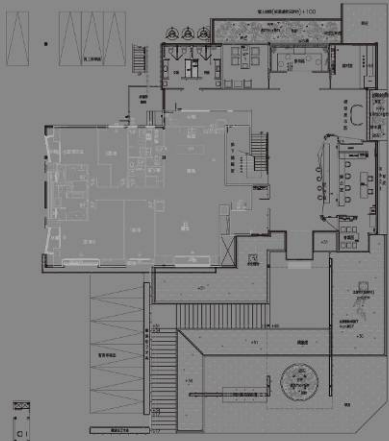
THE  
PUHUU  
The Charm is blooming

坐落地點 | 台灣台中市  
基地面積 | 1733.7 $\text{m}^2$  / 524.4坪  
建築面積 | 658 $\text{m}^2$  / 199坪 (含樣品屋347.3 $\text{m}^2$  / 105.1坪)  
樓板面積 | 1F: 310.7 $\text{m}^2$  / 2F: 162.1 $\text{m}^2$   
主要建材 | 鐵件、木格柵、水泥板、紫檀木、大理石、玻璃  
完工時間 | 2012/01

Location | Taichung, Taiwan  
Site Area | 1733.7 $\text{m}^2$   
Building Area | 658 $\text{m}^2$  (include Model House 347.3 $\text{m}^2$ )  
Floor Area | 1F: 310.7 $\text{m}^2$  / 2F: 162.1 $\text{m}^2$   
Building Material | Steel, Wood, Concrete Board, Marble, Glass  
Finished Date | Jan. 2012



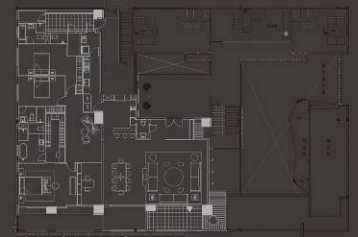
一樓平面圖 / 1st Floor Plan





本案發想肇基於臨時建築如何低調融入周邊地景，深度推演極簡量體與環境的對應關係。建築本體以方整的矩形打開橫向面寬，設計上以簡潔的水平、垂直線條結構，搭配大小不規則拼接的灰階水泥板，展現建築體外觀的素樸與精緻，更結合擅長的點狀、帶狀情境光源，凸顯綠地、水景承托主建物的輕盈之美，隱喻內斂中蓄勢待發的生命力。

The concept of this case is generated by how to make the temporary building integrated into the surrounding landscape with a low profile, and profoundly deduce the corresponding relationship between the simple body of the building with the environment. The building body is designed with a squared rectangular to open a wide horizon, using simple horizontal and vertical lines structure design and collocated with different size of irregular stitching grayscale cement board, to the naïve and exquisite appearance of the architecture. In addition, the building is combined with specialized punctual and banding situational light source, highlighting green space, the water features echo the beauty of light weight on the main building, metaphor the introverted but ready-to-go vitality.



二樓平面圖 / 2nd Floor Plan



# 國泰璞匯接待中心

The PUHUI RECEPTION CENTRE



幾何延展的灰階量體，左側依適當比例浮凸俐落的鋼構、茶玻架構，宛若琥珀光盒般的意象，與水泥板的粗獷恰成生動對比。推開特製竹編大門進入售樓處內部，醒目的迎賓櫃台是空間光點，由摺紙概念而來的立體天棚與櫃台基座，分別以木作搭配人造石建構，如同鑽石立體切割的形體，在焦點燈光襯托下尤其力道遒勁，橫斜其間的黑色樹枝，別具設計者獨有的風格印記味道。

Geometrically extended grayscale body, the proper proportion and neatly embossed steel structure and stained glass architecture on the left has the image of amber light box, and gives a vivid contrast to the rough cement board. Push open the specially made bamboo weaving door and enter the interior of the sales office, the eye-catching welcome counter is a huge space light spot, the three-dimensional ceiling and counter pedestal come from the concept of Origami is constructed with wood and artificial stone, the three-dimensional body which is cut like a diamond, set off under the focus of light exhibit special strength, the black branches cross fall in between, show the designer's unique style and imprinted taste.