

TID 2012 Award
Taiwan Interior Design

居住空間/單層
Residential space / Single Level

森之光
Light of Forest

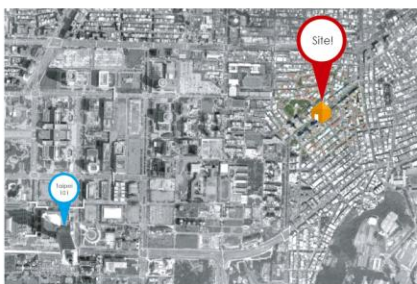
瑋奕國際設計工程有限公司
WEI YI INTERNATIONAL DESIGN ASSOCIATES

主持設計師 Chief Designer	方信原 Ferran Fang
協同設計師 Co-designer	洪于茹 Teresa Hong
	翁雅韻 Anna Weng
	許家綾 Eryn Hsu
攝影者 Photographer	林福明 Fu-Ming, Lin



森之光 LIGHT OF FOREST

人們居住在自己建造的水泥叢林中
一切是如此有規範的架構下
生活忙碌著，但內心想擁抱的那份舒適
猶如想擁有一片可慢活的森林
一絲微亮的燈光，帶領你去尋找這份幽靜



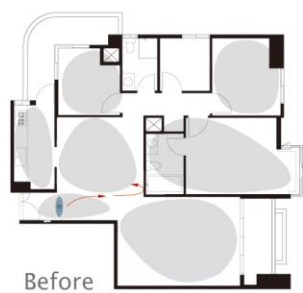
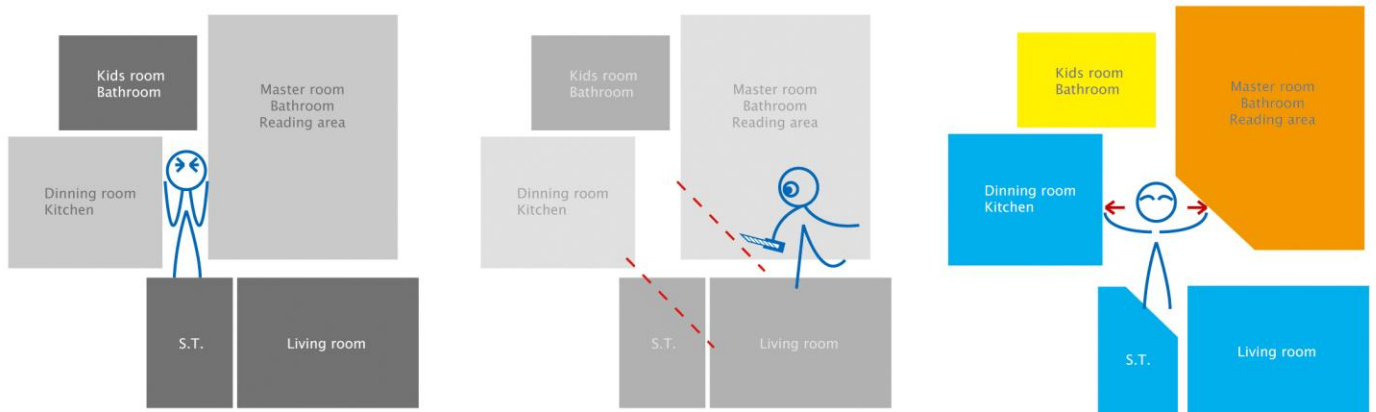
偌大的水泥叢林
擠壓着人們的呼吸。
雖帶來了文明
亦讓人們某種原始純真的元素逐漸消失。

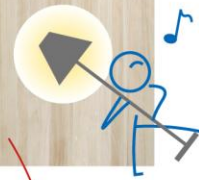
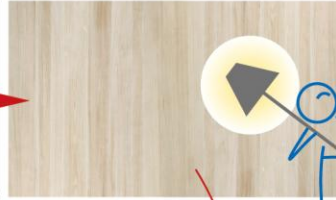
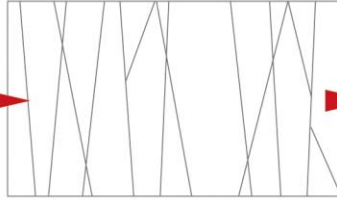


設計規劃策略

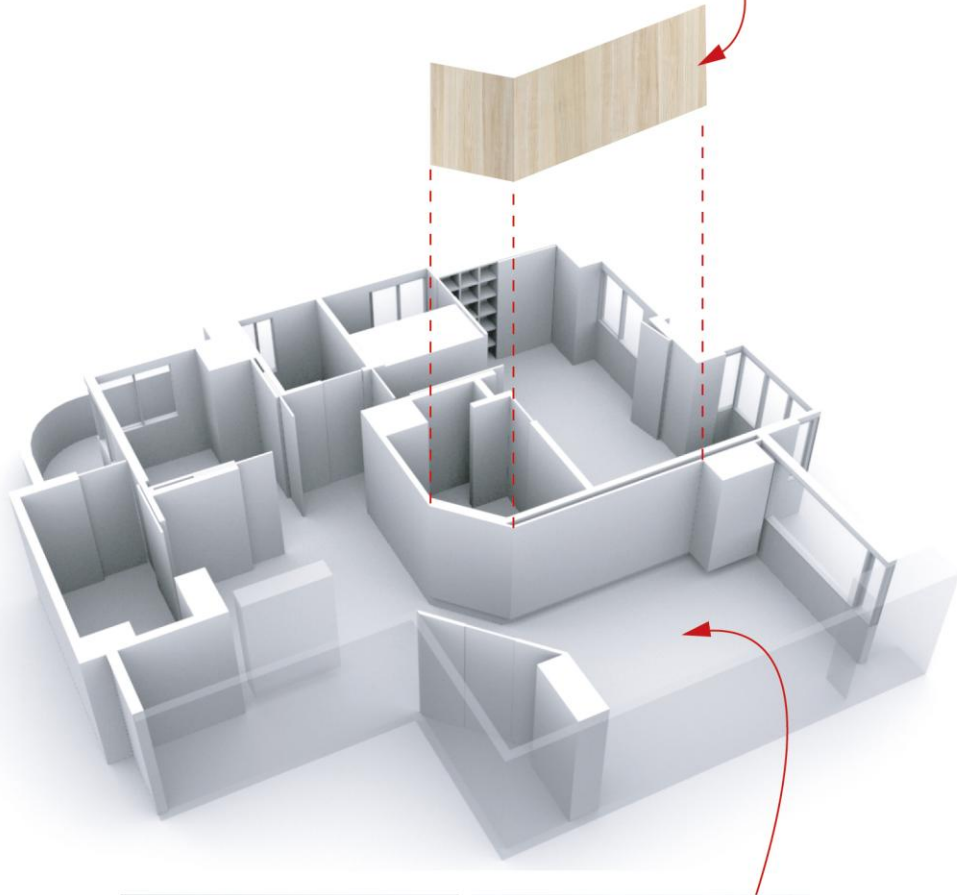
斜面的藝術

在行為模式的引導之下，人們對於點、線、面組成的空間，總有既定模式（慣式）。斜面（線）對人們而言，他總是如此的陌生，且不具確定性。但是真的如此嗎？適度的斜面（譬如角度、尺寸、比例、等），解決了原先人們認為穩定的元素，所造成的矛盾及對立。取而代之是平衡、延伸，斜面（線）是個元素，亦是門藝術。





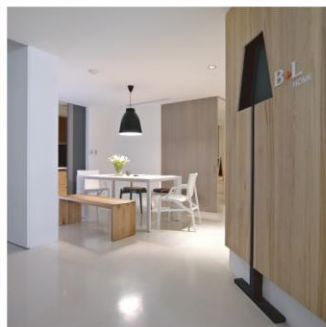
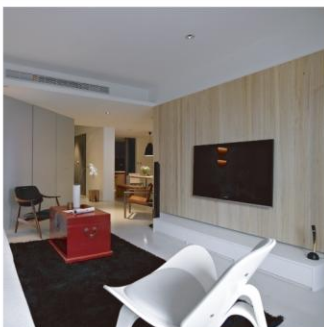
B+L HOME



設計規劃策略

意境

當叢林是無法脫離時，用另一種角度來看待，地面特殊材質灰白色PANDOMO詮釋為大環境的條件。
梧桐木條理分明，如樹林般的呈現，讓人有種置身於森林之境，謐靜、溫馨，諸多事宜皆拋之腦後，享受這片刻的自我。
燈，常被比喻為人生之指引，入口斜面上的小燈，似乎訴說著：家，人生價值的起始點。





Living in the city but calm and peace.



1. Renovation:

Using an incline technique to divide the space into living room and dining room, and that makes the interior space bigger than it actually is. This technique is to precisely calculate the proportion of each room and try to balance it as much as possible. Then fulfill the client's demands by utilizing different functionality and maximizing the compatibility of each space.



2. Sending A Message:

Using an unique texture to create an elegant and pure atmosphere. Gray and white are the main color tones in here, off-white of Pandomo, off-white of the walls, white of the wooden furniture, different material and different technique has make it well interpreted. The warm and moist wood texture is like a blend in this room. The whole color shade thing has totally expressed the client's personality, low-profile and modest.

