

TID 2012 Award
Taiwan Interior Design

居住空間/單層
Residential space / Single Level

怡居·適所
Pleasant living and accommodating space

冠宇和瑞空間設計有限公司
GUDC Architecture & Interior Design Co.,Ltd.

主持設計師
Chief Designer

蕭冠宇 David Hsiao

協同設計師
Co-designer

陳羽蓮 Emma Chang

董家錦 Jeremy Tung

王俊智 Pallas Wang

蘇致豪 Jed su

蔡庭輔 Chester tsai

攝影者
Photographer

游宏祥 Kyle Yu

如果生活需要一個態度，居住空間就是展現生活理念的背景舞台，在人與舞台之間，創造最平衡和諧的主次關係，展現居家氛圍特性。

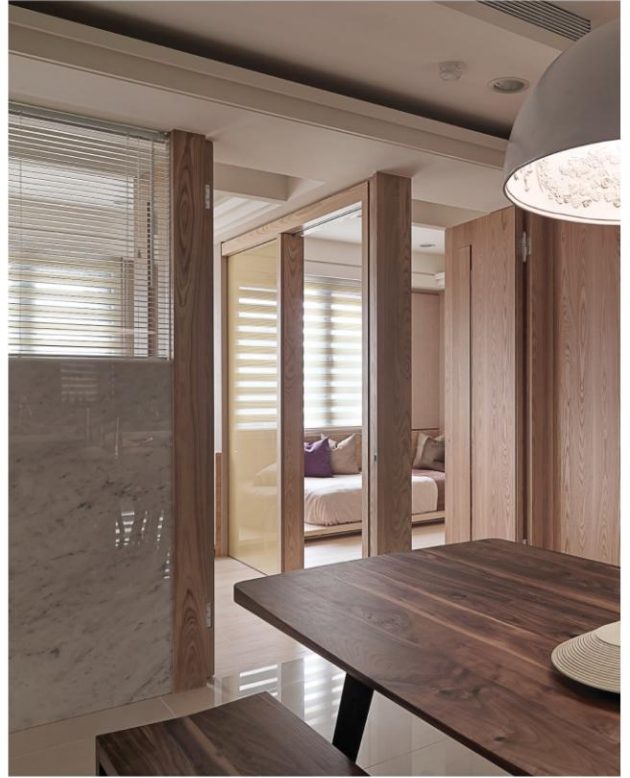
Living takes a certain attitude, and the residential space serves as the background stage to live a life. Among residents and their stage, it is key to create the utmost balanced and harmonious connections between the priority and the secondary in order to exhibit the characters of household atmosphere.



“家”的概念是所有家庭成員心目中的共同想望，也是貫徹每一處空間場域的設計主軸，視覺焦點將空間逐漸隱退至幕後，襯托出人的主角定位。

A mutual desire for all residents is the sense of “home” rather than just an apartment, and this is also the core value that is carried out through every space. The visual focal puts design in the background to position people as the priority.





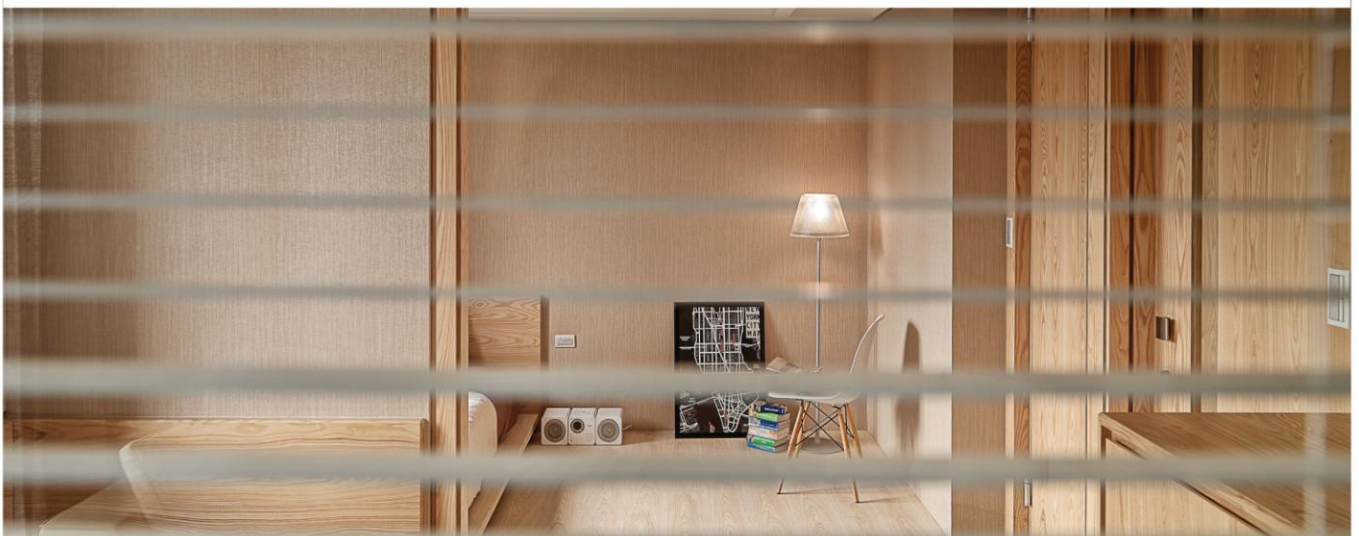
與餐廳相望的雙客房因應居住者的需求，自然開敞相融為公共的虛空間，如同在水墨間留白，在生活中延伸想像，空間因而純淨，居住得以隨性自在。

Across from the dining room are two guest rooms to accommodate the needs of the residents. These two rooms can either become an extra space when merged with the common area, or turn into separated private space for visiting guests. The flexibility provides freedom to satisfy various needs, just like Chinese painting leaves blank for imagination.



公共空間輕巧地開窗引進光線於全室，淡雅雋永的同時也成為心情轉折的空間

Windows in the common area introduce lights into the entire space. It is as graceful and timeless as it is a transition place for emotions.

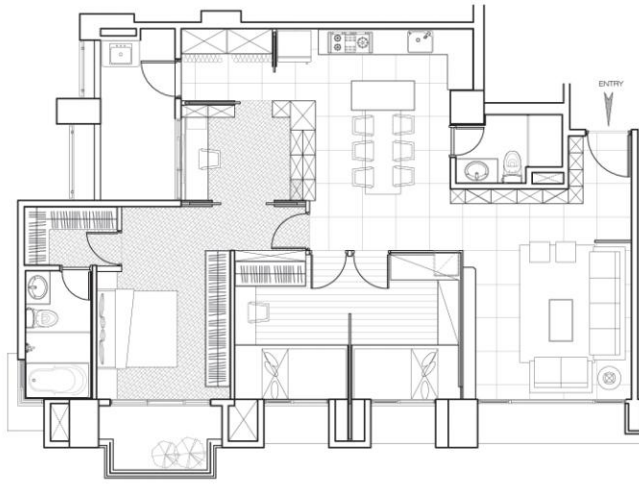


怡居·適所

內湖涵玉徐邸 Taipei, Taiwan

用垂直向的木紋作為整體背景，讓自然的紋路烙印在樸實的空間上，原味質樸得以完美突顯材質的純然，達到屋內寧靜的自適生活。

Vertical wooden texture is used as the overall backdrop to allow a touch of nature in this modest space. Unadorned imagery perfectly reflects the purity of materials to reinforce the tranquility and comfort of living.



PLAN

