

TID 2012 Award
Taiwan Interior Design

居住空間/單層
Residential space / Single Level

柏悅
Bo-Yueh

唐林設計 / 亦果工程顧問公司
IQ INTERIOR DESIGN CONSTRUCTION CO.,LTD

主持設計師
Chief Designer

廖韋強 JOHN LIAO

協同設計師
Co-designer

廖佳珍 ANGELA LIAO

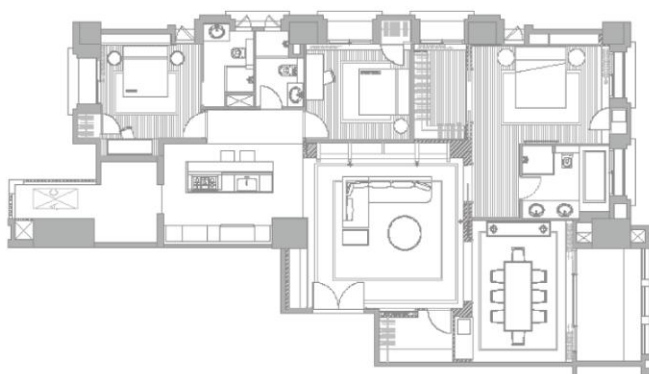
攝影者
Photographer

古禮維 KOLEII

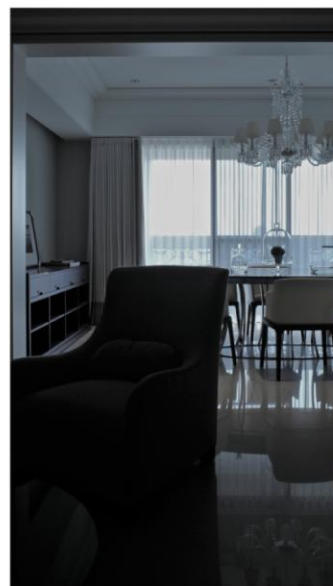


THE MINIMAL MODERN

柏悅



1



The inhabiting is the essence of human beings, and that's the most interesting topic in interior design. The philosopher, Martin Heidegger was the first person to bring it up in "Bauen Wohnen Denken". The sky, the earth and the constructions are defined as inhabiting. Human beings reveal it's true color by inhabiting and inhabiting is to accept the sky and the earth, to purify, to feedback and reflect ourselves. The living philosophy that followed by the upcoming demands, makes all the designers to think more deeply, both aesthetically and architecturally. And each designer expresses and deliveries varies based on different taste and aspect.

2



The technique is the best way to present the details. It takes years of experience for a constructor to his job well so that it can mix and match the design perfectly. Each design varies based on different style, layout, detail finishes and level. And when it goes with functionality and flexibility, it becomes a good design, totally fulfills the client's demand and request, thus on-existent omen, which becomes the main theme of the Golden Pavilion. This type of omen is a non-existent one. It is completed in the beauty of the details, thus on-existent omen, which becomes the main theme of the Golden Pavilion. This type of omen is a non-existent one, it is



The mix and match of wood, iron and glass makes this place so sophisticated and full of personality. Also, it brings up a visual impact as it's nothing you would mix together in one place before, totally pushing to the edge but surprisingly amazing. And you get to see how detail orientated the designer is, each piece of furniture, the texture and even small pieces like photo frame and vases. Any revolution or creation is not easy being implemented when it comes to interior design. It always has to be demand oriented. The designer has to do a lot of talking, discussion and communication with the client before everything gets started





The glass bricks is being well used in this case and it brings in the nature sunlight, totally makes this place so cozy and comfortable, and you can just stay in and do nothing at all for hours. thus on-existent omen, which becomes the main theme of the Golden Pavilion. This type of omen is a non-existent one. it is completed in the beauty of the details, thus on-existent omen, which becomes the main theme of the Golden Pavilion. This type of omen is a non-existent one. it is completed in the beauty of the details,



The true beauty is not just about what you can see, not about the quantity or the size. It's all about the consistency, each piece of the furniture and lamp. The lighting changes at different time, and it's all being precisely designed. theme of the Golden Pavilion. This type of omen is a non-existent one. it is completed in the beauty of the details, When it comes to sophisticated and modern design, designers are very specific about layouts and mixture. The neat and tidy composition is like a aesthetics log, full of high expectation and years of experiences.

