

TID 2012 Award
Taiwan Interior Design

居住空間/單層
Residential space / Single Level

閱讀空間的順序
Made by art

近境制作設計有限公司
DESIGN APARTMENT

主持設計師
Chief Designer

唐忠漢 T T

協同設計師
Co-designer

林之豐 Chih-Feng, Lin

攝影者
Photographer

游宏祥 Kyle Yu



閱讀空間的順序

Made by art

空間是容納生活的器具
藝術是凝聚生活的感動
每件藝術作品
都有其適切的空間居所
空間與藝術
二者之間相互對話互動
隱藏著一種閱讀空間的順序

在空間的設計細節中
偏心軸門的序列並排
框架出畫作的前景
創造了空間的層次
引領出一種藝術的氣質

Space is the container that embraces life
While arts condenses touches of life
So that every artwork
Has its suitable dwelling of space
For space and art
The dialog and interaction between the two
Is hidden with some order of the space
Of details of design within space
The sequential arrangement for the eccentric shaft door
Create layering of space
And bring out an artistic quality



立面的主牆 運用石板堆疊的意象
將原始自然的素材概念 引入室內
木石交疊 形塑一個人文趣味的空間

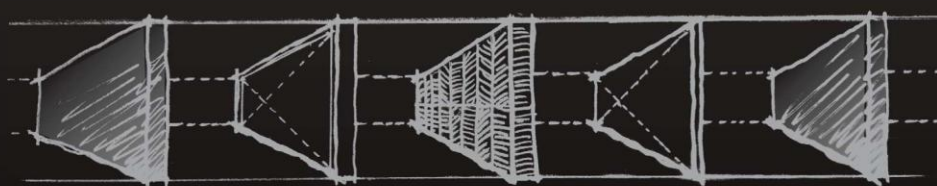
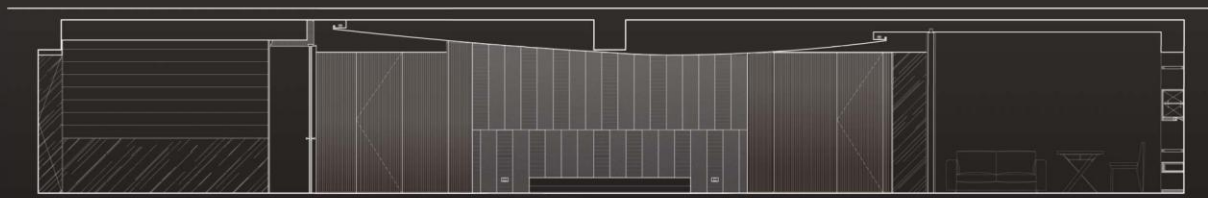
As for the primary standing wall .The imagery of accumulated stony plates are used .So that the idea of natural and primitive ingredients is introduced .And brought indoors.The intermixing accumulation of wood and stone.Have worked to shape into a function and humanistic space





空間與藝術的某個部分 支撐了這個場域的精神 讓整體呈現詩意的靜謐空間
 面對在空間色調與材質的運用上 將空間元素 傢俱材質與藝術畫作整合為一個完整的調性
 讓陳設藝術 成為一個介質 傳遞一種空間氛圍

The certain part of space and art. Have sustained the spirit of such domain. So that the entirety has displayed the poetry of such serene space.
 Regarding the use of space coloring and materials. The space elements, furniture materials, and artistic works are all integrated into a complete tone
 So that display arts. Have become an intermediary. That conveys a space atmosphere



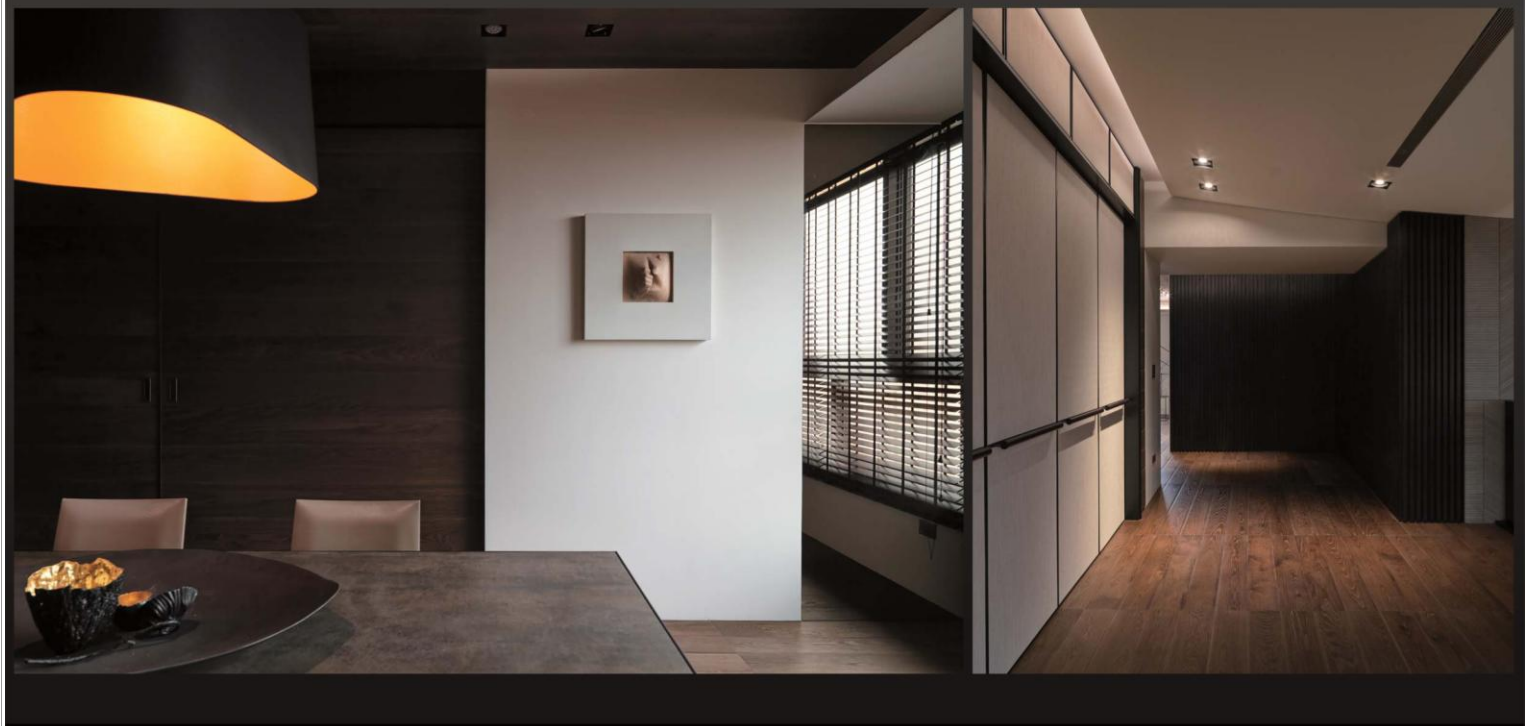
Entity

Transparent

Solid wall

Transparent

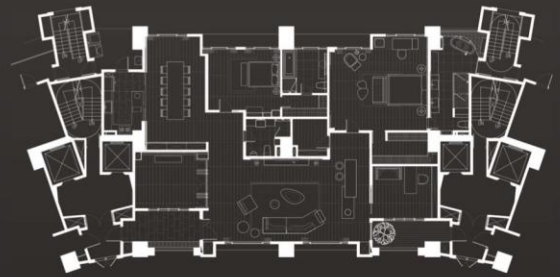
WALL





一種空間的靜謐感 穿透了空間的層次，讓我們在此安定的休息。一個屬於聲音的空間設計 靜謐 穩定，讓我們可以聽見自己 感受空間的能量。

A quiet sense of space. Penetration level of space. Let the rest of this stability. A space of sound design. Tranquil and stable. So that we could hear his. To feel the space energy



透過 強調原本材質的特色
加強空間的穿透層次
反射呈現出內在的寧靜
讓詩意的氛圍於此呈現

Through .Feature that originally
places focus on primal materials.
Stresses the penetration layering
of space.

In reflection and demonstration
inner serenity.So that poetic
sentiment can be well revealed