

TID 2012 Award
Taiwan Interior Design

居住空間/單層
Residential space / Single Level

空間雕塑
Sculpturing the Space

近境制作設計有限公司
DESIGN APARTMENT

主持設計師
Chief Designer

唐忠漢 T T

協同設計師
Co-designer

林之豐 Chih-Feng, Lin

攝影者
Photographer

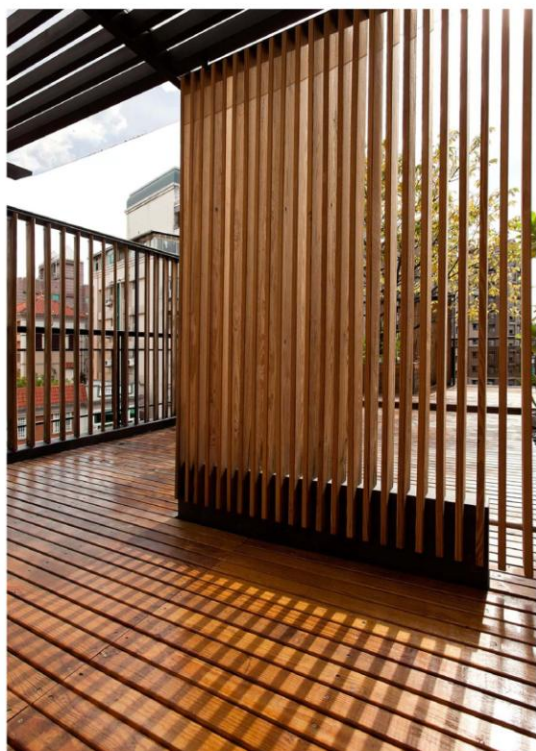
岑修賢 Sam、高伊芬 Yvonne



原本空間中的樑柱管道結構，透過藝術化的轉換過程，成為空間中的主要量體，由此界定出空間的機能。

After the artistic transmission, the original beam column structure becomes the main building structure in the space as well as become a way. We define the space function and building structure.





空間的量體以雕塑的概念呈現多重的趣味風格
一個遊戲的空間就此定調。

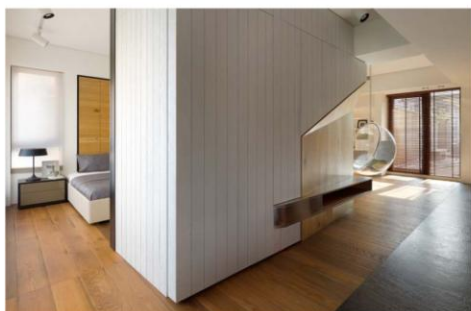
By the sculpturing concept the space has fun multi-style.
That's how an entertainment space developed.





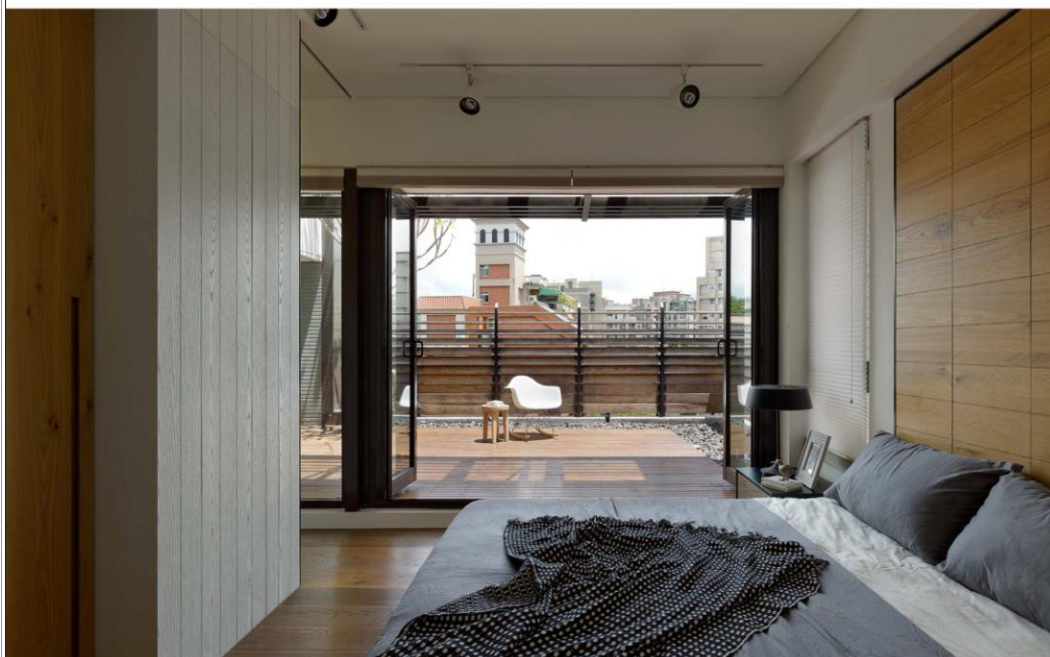
複合式的空間機能
 將廚房與餐廳的功能整合
 單純化的整合機能
 連續延長的檯面
 放大了空間的尺寸
 結合上方天花的格柵延伸
 強化了區域的界定與尺度

We create a multi-functional space by combining the function of kitchen and dining room. The simple combination and extended counter top enlarge the space size. After get united to the extension of ceiling grillage, it intensifies the region scope and scale.



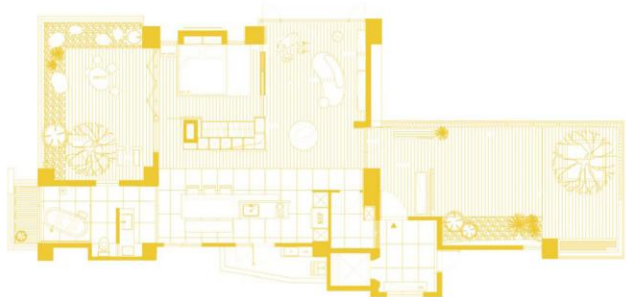


簡化空間的機能後，讓主要休息的私密區採取一種開放的方式，面對著後方的內庭，開放的折疊門，開闢了室外的關係，連接放大了生活的界線。



After simplified the space function, we open up the private rest area, have them face the back yard with an open folding door. By doing so, it broadens the relationship between indoor and outdoor and enlarges the life boundary.





衛浴空間的配置延續了空間的主軸 將淋浴與缸體置放在半戶外的場域
陽光、空氣與水的空間在此會合 強調了空間的自然精神

We extend the main space design concept to the bathroom space setting, which is putting the shower and bathtub in the semi-outdoor area. The sun, fresh air and water integrate here emphasizing the natural spirit this space has.



