

TID 2012 Award
Taiwan Interior Design

居住空間/單層
Residential space / Single Level

軸向
Axial

近境制作設計有限公司
DESIGN APARTMENT

主持設計師
Chief Designer

唐忠漢 T T

協同設計師
Co-designer

黃達玫 Dada Haung

攝影者
Photographer

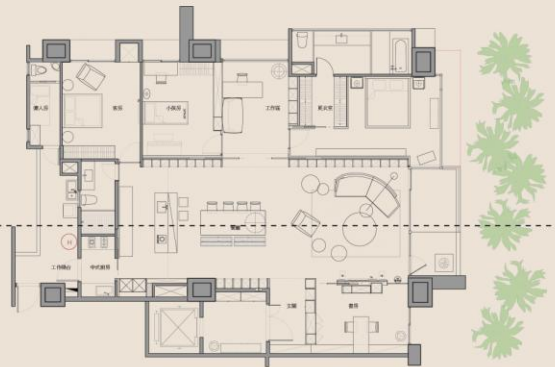
游宏祥 Kyle Yu

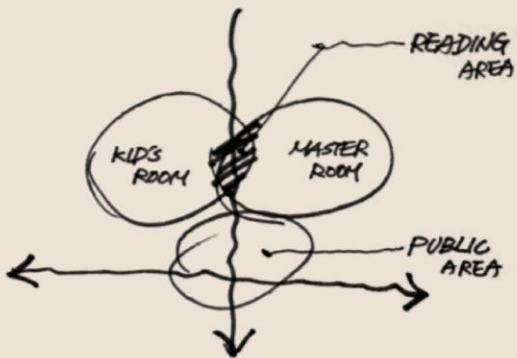


軸 向

Axial
re-organize the space movement

空間的動線格局，影響著居住者的互動行為，
設計之初，將私密空間動線入口轉向，面對公共書房的區域，讓
家人的互動，更為直接，更為頻繁，集中的動線分配，強化了主要
立面的連續性，使空間中書牆保持完整，成為整個空間的設計主軸





The movement pattern in the space will have an impact on the resident interaction. For that reason, the design starts at turning the entrance of private space movement to face the public study area so that the family members can interact with each other more directly and frequently. The focus movement distribution intensifies the continuity of elevation, maintains the solidity of book-shelf wall in the space and become the focal point of space design.



開放書房與餐廳的連結，運用雙開的拉門變化
界定開放與單純，讓公私領域的空間層次，產生變化組合

The connection between dining room and open study is bi-parting door. The door helps delimit the line between the open and private space and creates the multi-combination to it.





空間的格局動線
影響居住者的互動行為
我們嘗試重組空間軸線
強化家人們的互動關係
透過開放的格局延伸
擴大了室內的視覺層次
引入難得的室外綠意

re-organize the space movement

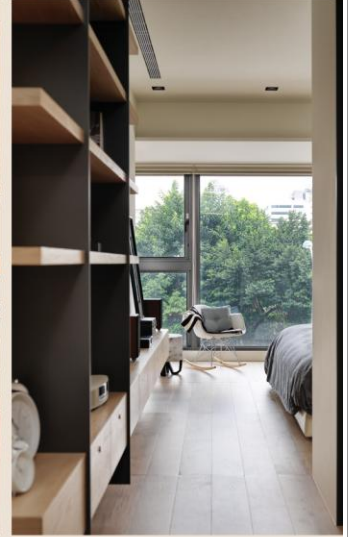
Axial





The movement pattern in the space will have an impact on the resident interaction. Therefore, we try to re-organize the space movement to strengthen family interaction, expand the interior vision by the extension of opening pattern and bring the exterior green in the interior space.





從書房延伸至餐廳的軸線

餐桌吊燈的位置成為

空間軸向的交匯

向內擴大了互動空間的領域

向外引導了視覺層次的效果

As for the movement line extending from the study room to dining room, the location of pendent lamp on the top of dining table becomes the integration of axial space. From such lamp, it will expand the interaction area when towards inside and guide the vision effect when go toward outside.

