

**TID** 2012 Award  
Taiwan Interior Design

工作空間 Working space

Paradox House

THE XSS LIMITED

主持設計師  
Chief Designer

張思慧 Catherine Cheung

攝影者  
Photographer

張思慧 Catherine Cheung, Bobby Sum



# PARADOX HOUSE

A split-level warehouse turned chic multimedia design studio, Paradox House finds the perfect balance between functionality and style while reflecting its owner's unique taste and way of life. It created a striking multimedia design studio with clean, angular lines that showcase a prominent yellow-tinted glass box on the mezzanine. Geometric shapes and lines are modern and awe-inspiring but tastefully done to ensure a unique working space.



# GEOMETRY

Located in Bangkok, Paradox House stays true to its name with contrasting design elements, from dark materials paired with stark white walls, to silver aluminum mixed with silky fabrics. The design intends to create a relation between personal life and work which express the client's life. This studio's challenge included a flexible use of space and large-group gatherings accommodated.



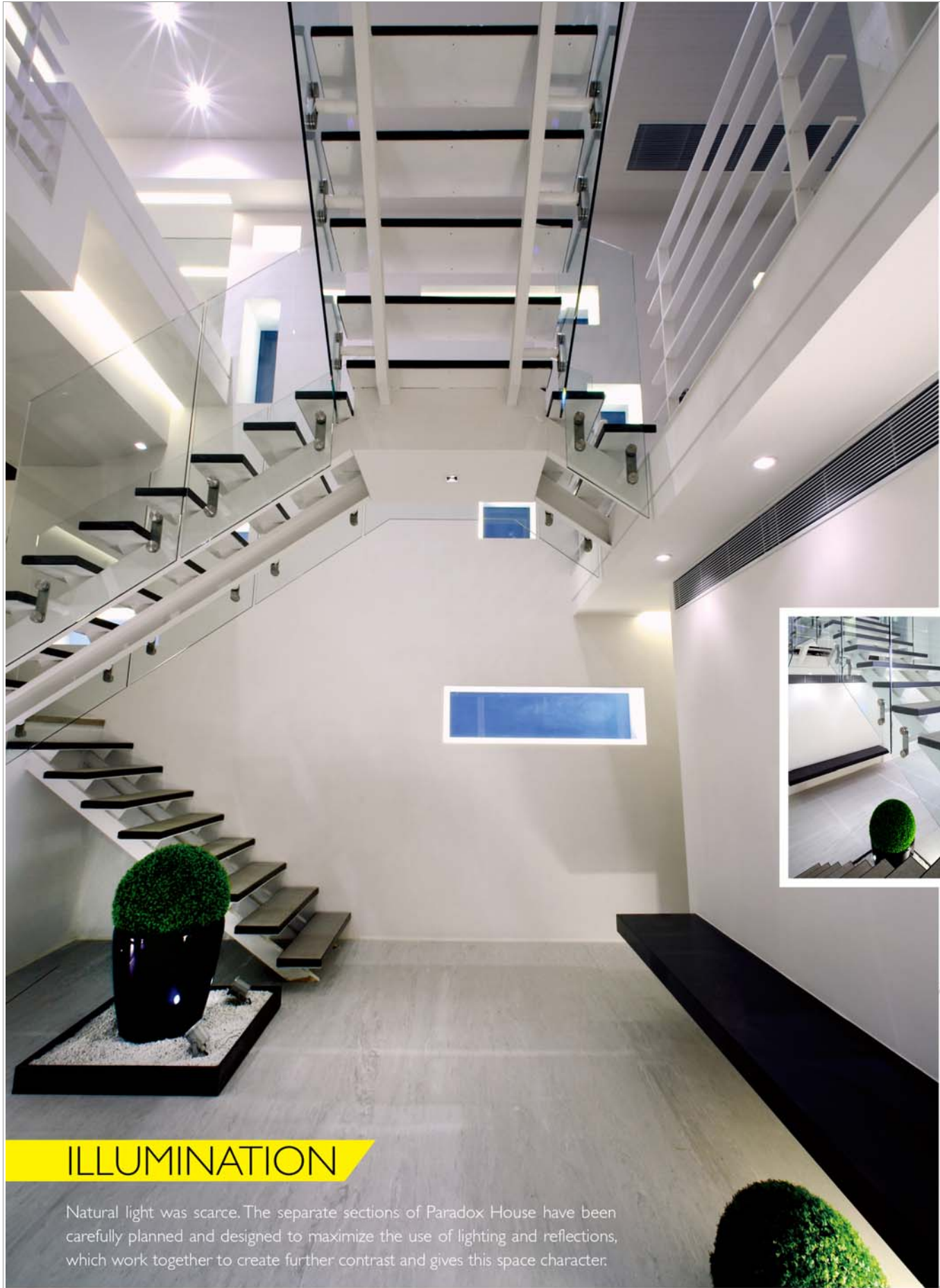


# ARCHITECTURAL ELEMENT



Drawing inspiration from a multitude of contemporary styles, the architecture of Paradox House plays a key decorative role. The steel and glass staircase is definitely the piece de resistance. Cleverly designed to appear as though it suspends freely, creating the illusion of floating planks. You'll feel like you're walking on clouds one section of the property to another:

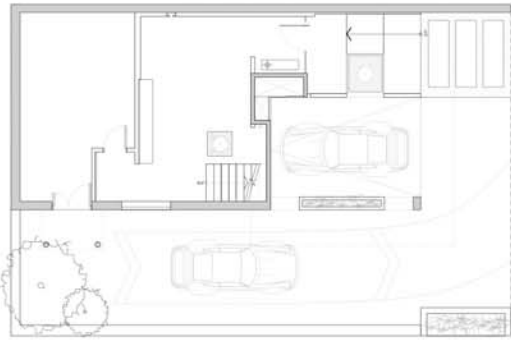




## ILLUMINATION

Natural light was scarce. The separate sections of Paradox House have been carefully planned and designed to maximize the use of lighting and reflections, which work together to create further contrast and gives this space character.

Aiming to create the feeling of 'natural sunlight' inside the black box, designer uses the 'block' concepts to create lighting effects among boxes of various sizes and heights to generate contrast and manipulate the effects of 'what is lit and what is left' in the shadow, so as to achieve the dynamic impact. d manipulate the effects of 'what is lit and what is left' in the shadow, so as to achieve the dynamic impact.



Aiming to create the feeling of 'natural sunlight' inside the black box, designer uses the 'block' concepts to create lighting effects among boxes of various sizes and heights to generate contrast and manipulate the effects of 'what is lit and what is left' in the shadow, so as to achieve the dynamic impact.

Enhancing the desires of studio owner; are hosted of fundamental facilities including the interior plaza, social club, and mini bar. Integrating with arts, cultures, and exhibitions with open plan in simplicity presentation, this is surpassing the expectation of client.

