

**TID** 2013 Award  
Taiwan Interior Design

商業空間

The TID Award of Commercial space

托斯卡尼尼義大利餐廳

TOSCANINI

成舍企業股份有限公司 南西分公司

FULLHOUSE INTERIOR DESIGN

主持設計師  
Chief Designer

郭瑞仁 RAY

協同設計師  
Co-designer

歐安建 A.J

徐御尊 Alston

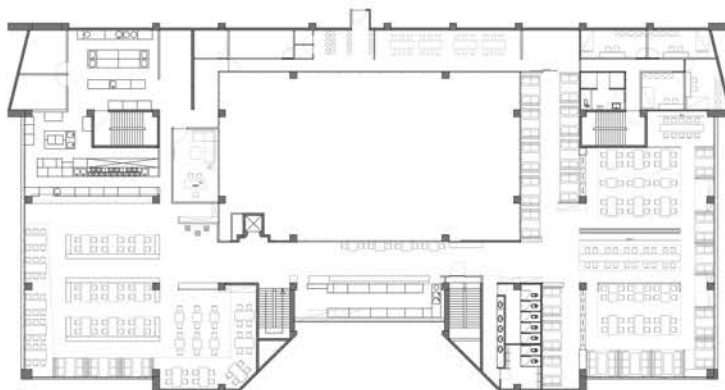
攝影者  
Photographer

王基守 Black

# LOFT WITH NATURE

本案是位在新竹科學園區的義大利餐廳，佔地三百餘坪可同時容納290人座位。環視建築結構，回字型的動線設計，中央環抱綠樹成蔭的中庭區域，設計師將既有的半高窗台保留，引邀自然光景進入，並萃取其中元素摺注設計，透過水泥、鐵件及來自峇厘島的實木，框塑出濃濃的工業風表情；從餐廳二樓望出的視野，正好與樹木齊高，在如此閒適宜人的情境中與親友共享時光，不僅滿足了味蕾，也撫慰了五感的緊張。

This case, the Toscanini Italian Restaurant was located in the Hsinchu Science Park, it covers about 1000m<sup>2</sup> and allow to accommodate 290 seats. Looking around the building structure, the "hollow" type of circulation of movement is surrounded by trees in the central atrium. The design team decided to keep the existing half-height bay window to allow natural light penetrated into the space. A strong industrial style was designed through the cement, iron and timber wood from Bali. Look out through the window from the second floor, was just at the right level vision of the field and nature. In such a quiet and pleasant environment not just satisfy the taste of food but also soothe the tension.

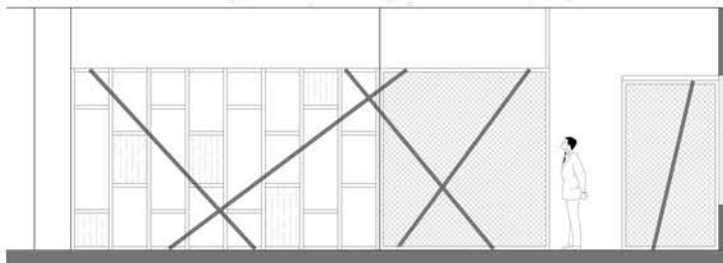




以吧檯為中心，整個用餐空間大致分為左右兩大區塊。週一至週五主要的客群鎖定當地上班族，僅開放靠近廚房的用餐區，透過活動式的併桌設計，集中客群大幅減低業主於電費細項上的支出。環視整個空間配置，地坪寬廣的條件，於細節處規劃可有更多彈性，除了設有包廂區，更有一座20人的長桌吧檯，而為了避免將空間區隔得太過零碎，設計師除了加入工業風語彙強烈的鐵網隔屏，讓視覺保有穿透感，座位區則一律使用PVC塑膠地板，與水泥粉光鋪成的廊道做切割，而天花板保留其挑高優勢，僅在走道與外圍運用鐵杉實木遮蔽空調室內機，創造層次的同時使整體看起來更有空間感。

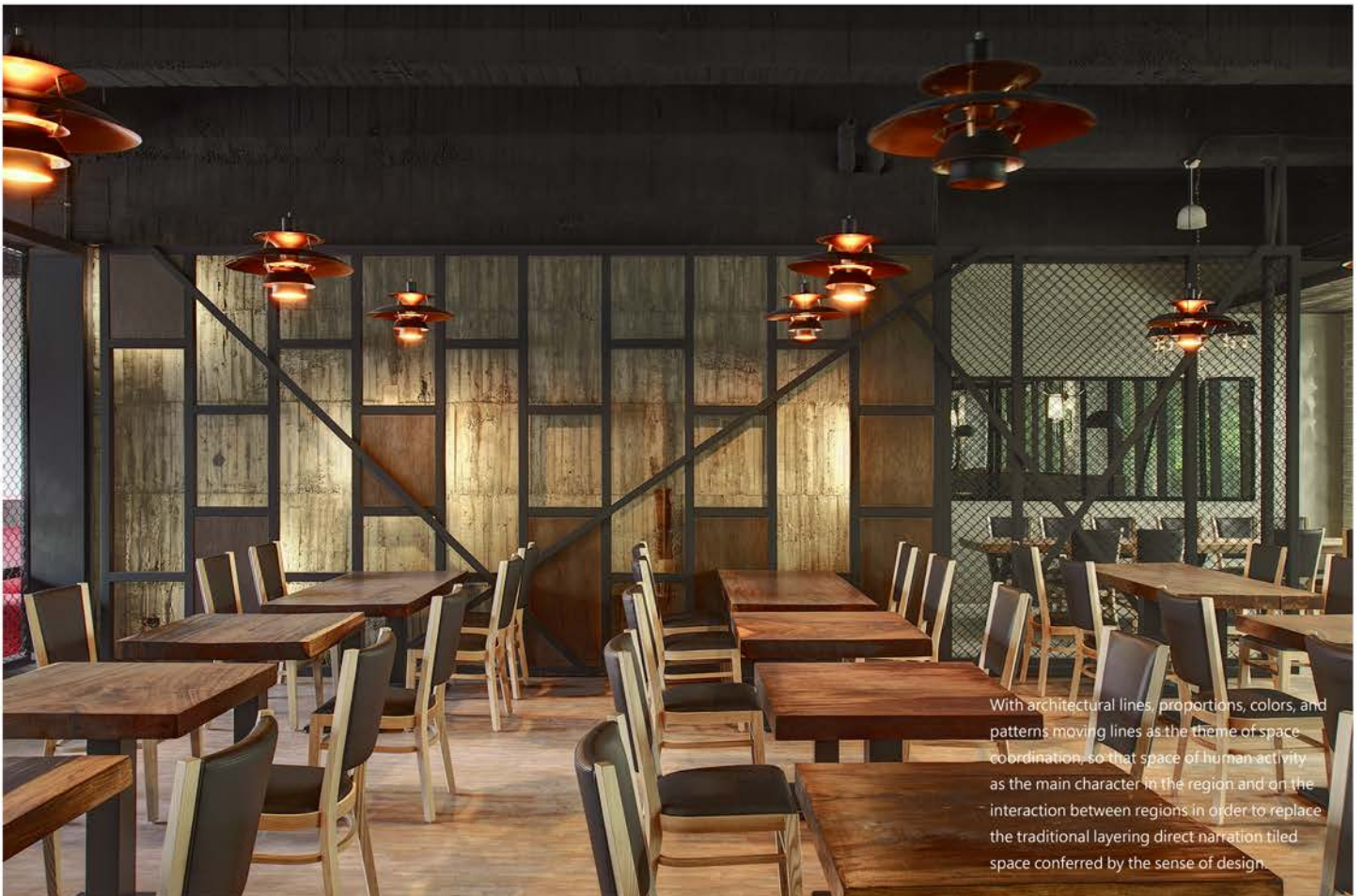
The entire dining space is divided from the central bar into two blocks. The main customers are mainly from the local office workers during weekdays. During this period of time, the space which nears the kitchen will be open to use. In order to achieve saving electricity and costing, area is design to allow combining tables for serving. Looking around the entire space allocation and the advantages of the large area, details at the planning may have more flexibility. In addition to balcony the area, design team also designs a long table bar which allows serving 20 people. However, to avoid the space segment were too fragmented; steel partition is added to allow visual penetration. In order to divide different functions of the area, seating area is packed with PVC flooring, whereas hallway is paved with cement, whereas hemlock wood shelter only used in the surrounding and to hide the air conditioner. Materials was design and used through layers but also enlarge the space.





在本案中並沒有變動原始格局，所有牆面一概保留，設計師運用木料與鐵件包裝，讓原本簡單的牆面變得有趣，與空間做呼應。

The original structure did not change, and all the walls are reserve. Design team applied timber and steel materials to achieve an energetic wall elevation.



With architectural lines, proportions, colors, and patterns moving lines as the theme of space coordination, so that space of human activity as the main character in the region and on the interaction between regions in order to replace the traditional layering direct narration tiled space conferred by the sense of design.



轉折進入廚房區，以文化石堆砌而成的桌櫃，同吧檯採開放式設計，適當的距離拿捏，可與客人擁有互動，卻不會相互干擾用餐品質。一旁的備品區前，設計師運用鳥籠裝置藝術，與入口印象相互輝映，在溫潤的木頭為襯下，透過鳥籠內燈光，打在地面上交織出充滿變幻的視覺焦點，逸趣油然而生。

Turning into the kitchen area, the open bar table was made by culture stone. With proper distance moderation, customers allow to interact to each other without interference during dining time. The cage installation art piece was used in front of the space area. It embraced the impressions of entrance, with warm timber material as the background. The lighting penetrates from the cage to the ground with full of visual focus which entertains the users and the space.

