



商業空間

The TID Award of Commercial space

Cafe Showroom 松山菸廠

涵石設計事業有限公司

MW Design

主持設計師
Chief Designer

魏芷涵 Michelle Wei

攝影者
Photographer

李國民 Lee Guo Min

Cafe Showroom 松山菸廠

Cafe Showroom有實踐藝術普及化之願景，除了設有咖啡店區塊外，還結合了藝廊空間提供給國內外年輕當代藝術創作者發表作品。希望藉由獨特的人文氣質吸引人們前來喝杯咖啡、看看展覽，從生活中展演藝術理念。

初始設計概念是希望傳達一間有著咖啡、茶、甜點、一杯紅酒、及認為人生一切美好事物都應該被收藏起來的空間，所以空間設計不能複雜，它得簡單、寧靜，且重視材料質感和細節。

Café Showroom is a space with wonderful things from daily life: desserts, tea, wine, arts and people. It combines coffee shop and gallery together into one space, and provides people from busy city to enjoy calmness while sipping their favorite drinks and viewing arts. The design concept is to have a quiet and simple space for the gallery while adding a little warmth for people who like to relax at the seating area.

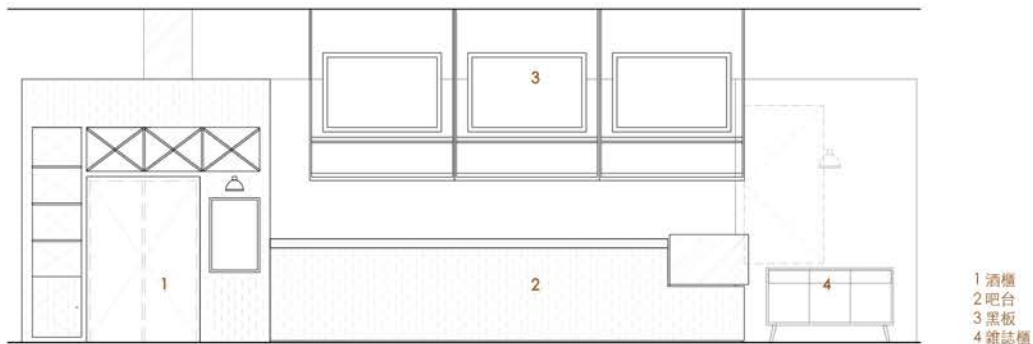


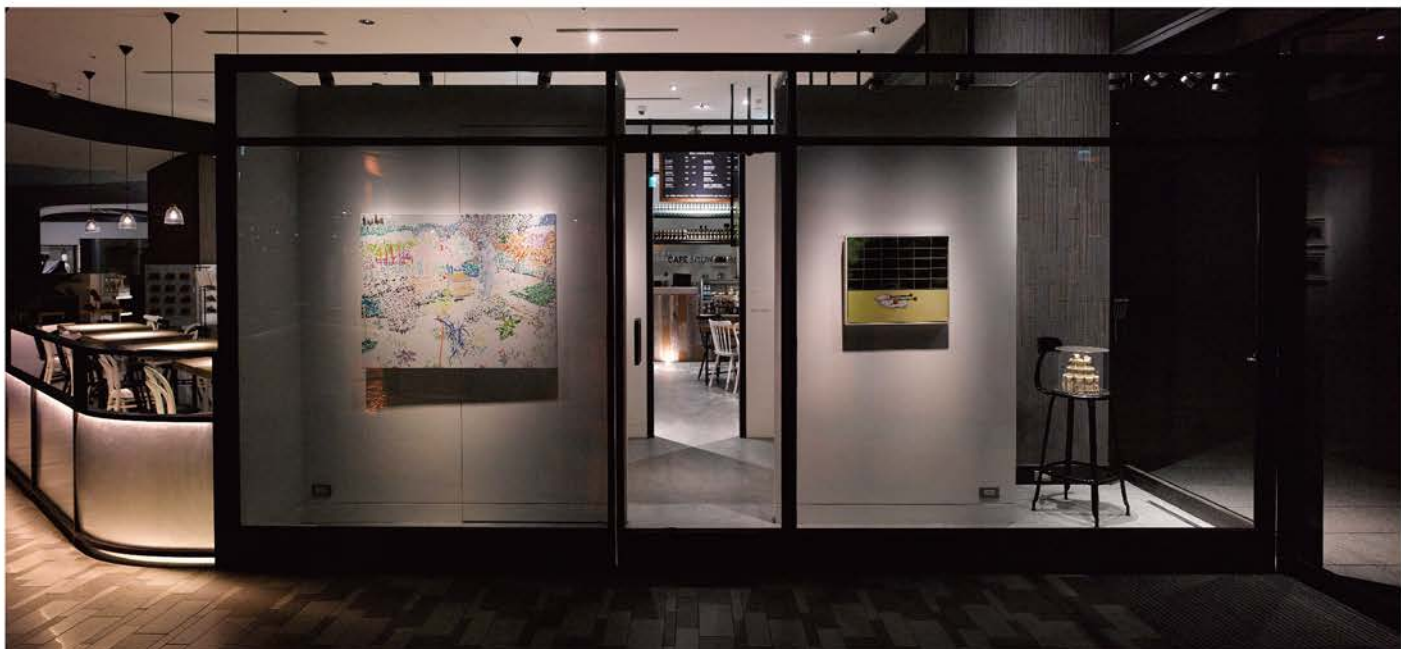


環保元素：舊圍籬及水泥台面 / Green Elements: Wooden Fences and Cement

吧台、酒櫃、及藝廊的立面是用一片片經過數十年日晒雨淋後變灰色系的木頭圍籬拼成。它溫暖但保留 Cafe Showroom 想傳達藝術空間乾淨的冷色調。走環保和低調風格的還有水泥砌成的吧台及餐桌台面，沉穩扎實的錯落，簡潔但又不失現代感。

The designer reused old wooden fences for the bar and walls of gallery to add softness into the space. The colors of the fences have become grayish from years of sun and rain, which balance well with the quiet atmosphere of gallery. The cement bar counter top and the tabletops also add steadiness and calmness for the space while keeping its modern feel.

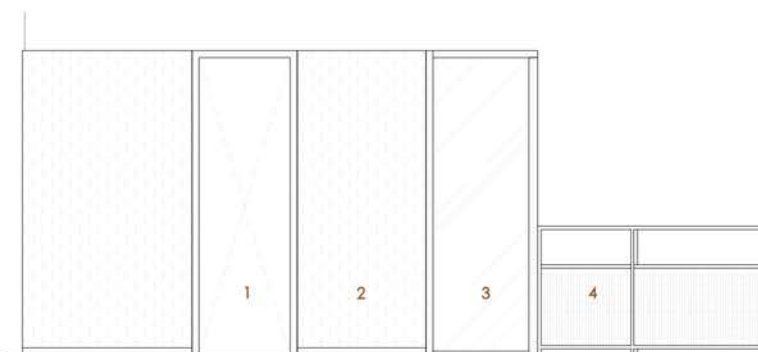




空間及燈光規劃 / Space and Lighting Design

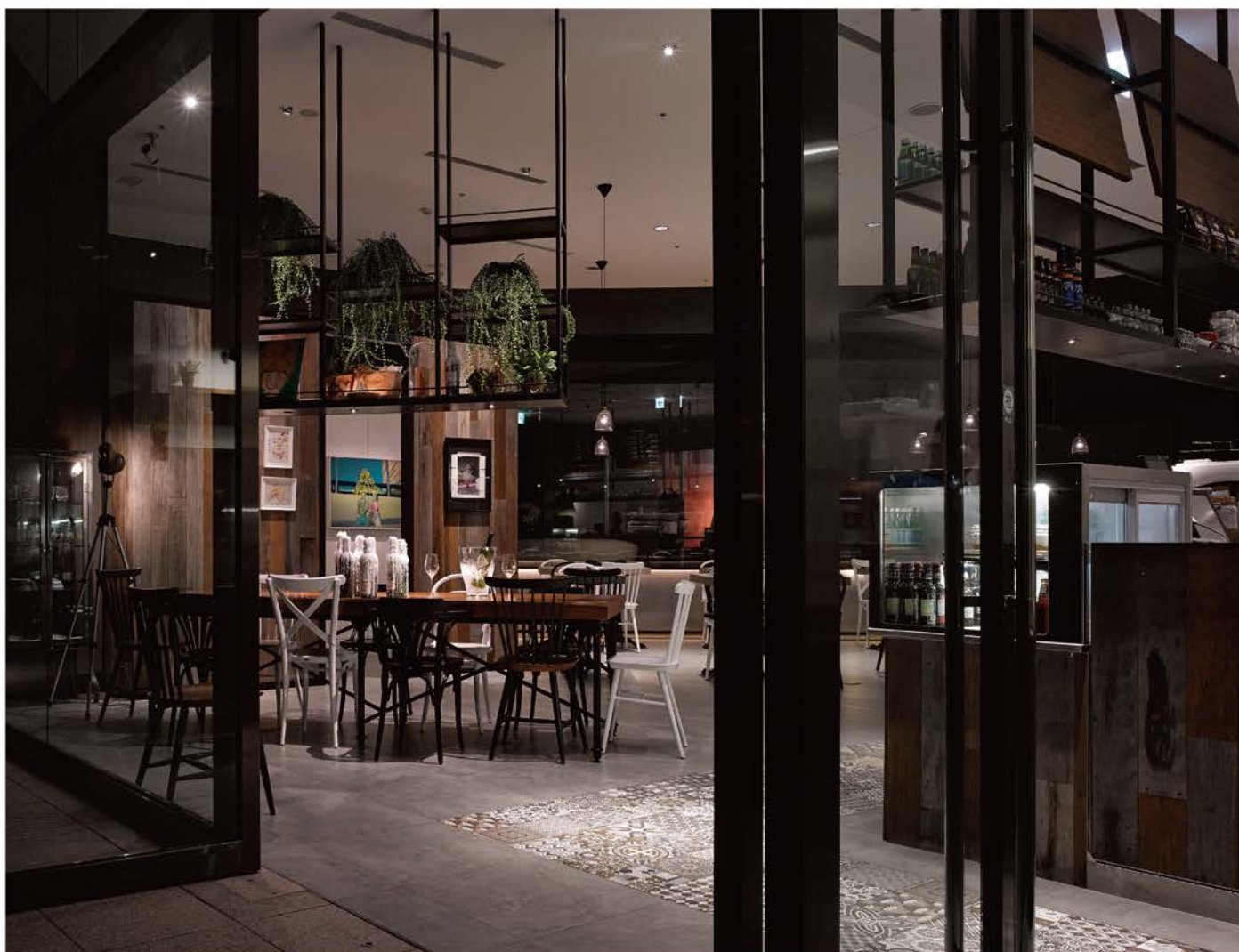
為了使咖啡店區及藝廊更融合，刻意將藝廊面對座位區的一角做一個斜面落地玻璃，使視覺更寬闊。簡潔利落的黑鐵件勾出藝廊的窗及門，使其量體更利落和立體。燈光設計在此空間也扮演著重要角色，重點式的燈光打在水泥桌面、舊圍籬、花磚、及鐵件圍欄上，單純的材料經過光的渲染，氣氛頓時柔美了起來。

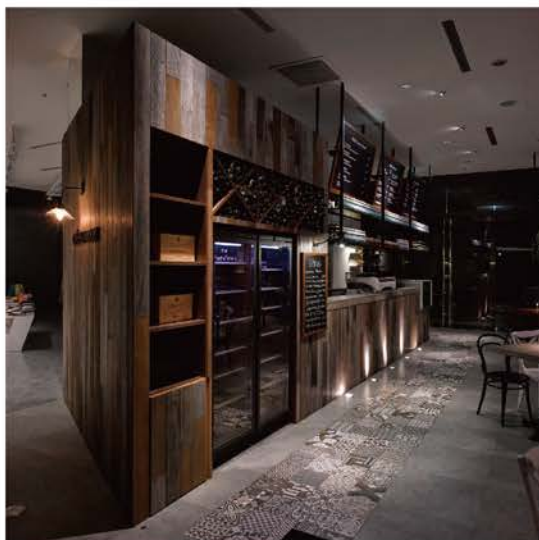
To extend the coffee shop area into the gallery space, the designer made a slanted transparent glass wall between two areas for visual connection. The black metal frames going around the windows, doors, and walls of the gallery have also made the gallery more standout when viewing from the seating area.



1 藝廊入口 2 舊圍籬 3 斜面落地玻璃 4 鐵件圍欄



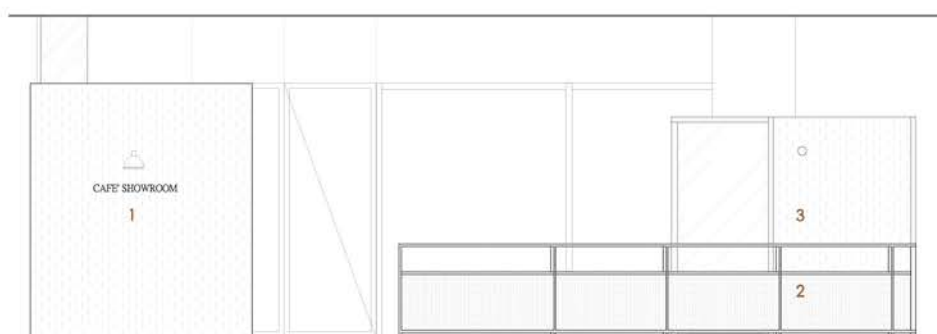




動線設計：西班牙花磚 / Walkway: Spanish Floral Tiles

此空間另一特色是運用了灰色系西班牙花磚來做走道的動線，跳脫了以往人們對色彩鮮豔西班牙花磚的印象。它具有豐富的花色，但它的灰色系充份的呼應著舊圍籬和水泥想要傳達低調沉穩的安靜氣息。

Another element used in the coffee shop is the Spanish floral tile for the walkway in front of the bar. It is different from the typical colorful Spanish floral tiles; its grayish patterns balance well between warm and quietness, which is the atmosphere that the designer wanted to create.



- 1 招牌主牆
- 2 鐵件圍欄
- 3 藝廊斜面落地玻璃





傍晚時分 / Space in Night Time

白天的咖啡店充滿了靜靜的文藝氣息，到了晚間，將經過特別設計的燈光調整，即變成隨興的聊天飲酒空間，尤其是紅酒櫃、老柚木長桌、及吊起本本書冊及片片綠色植栽的垂架更為空間增加了溫暖的氣氛。Cafe showroom 提供繁忙的都市人一個的藝術空間與悠閒時刻。

When it comes to dusk with adjustments for the lighting, the coffee shop has changed into a space with an ambience for chatting and wine tasting. Especially the wine coolers, big teak wood table and the hanging metal shelf above have also make the space more lively.

