

TID 2013 Award
Taiwan Interior Design

商業空間

The TID Award of Commercial space

拼圖食庫

Puzzle Osteria

敞居空間設計

CHANG-JU SPACE DESIGN

主持設計師

Chief Designer

曾耀徵 JULIA_TSENG

協同設計師

Co-designer

林柏伸 BOSON_LIN

李秉穎 ENTER_LEE

攝影者

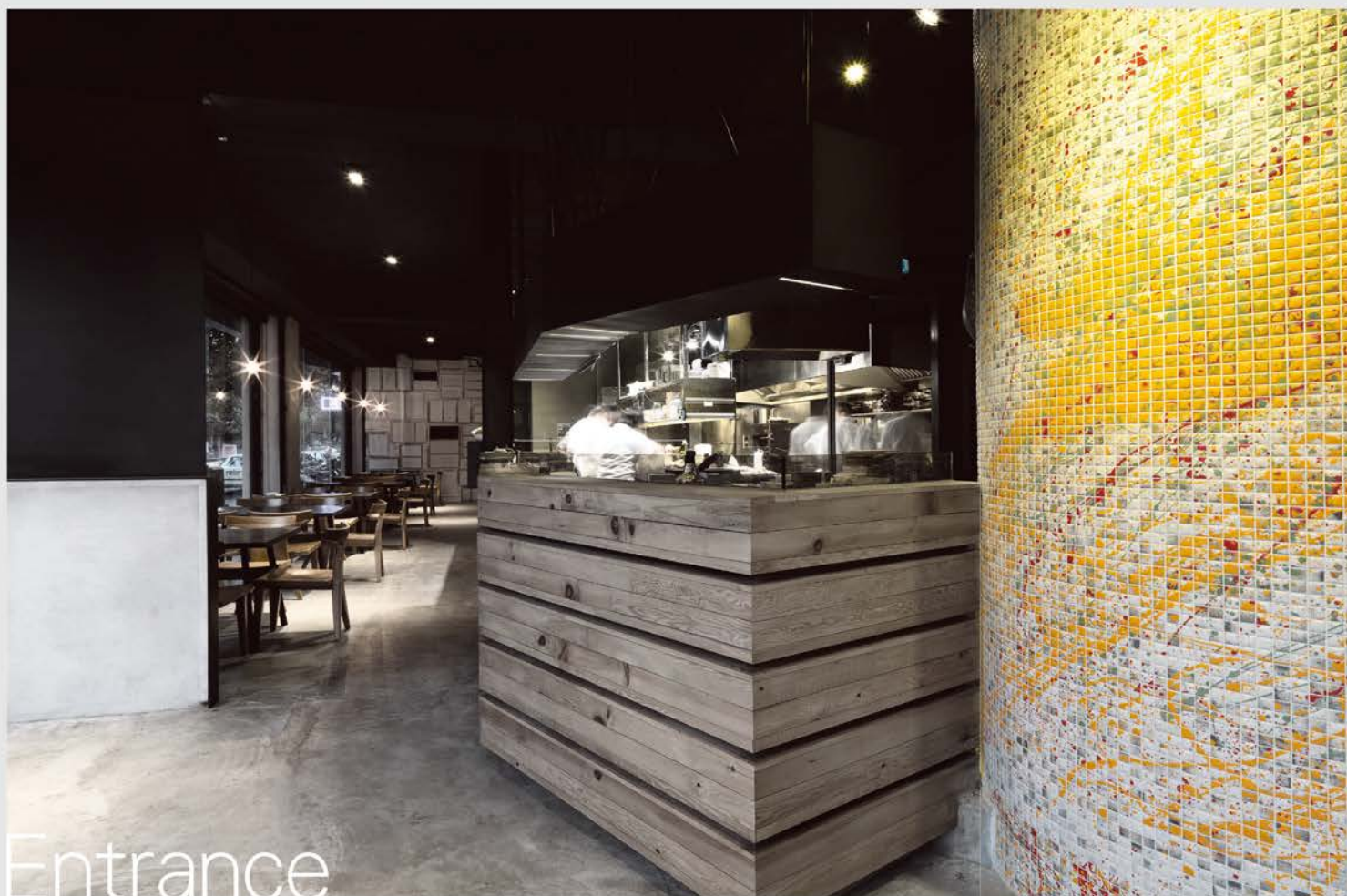
Photographer

吳啟民 KEVIN_WU

PUZZLE
OSTERIA

PIZZA • PASTA • APPETIZER





Entrance

PUZZLE OSTERIA

In 265 square meters,
time freezes,
the jigsaw puzzle of memory is completed.
The colored floor-ceiling pizza oven
tranquillizes chiseled concrete pillar,
pacifies mottling window wall.
In the centerpiece, ripples spread from the gray belt.
Black and white are not absolute.
Gray, blurs black and white.
Gray, reorganizes black and white.

Taking up 2/3 of the space,
the kitchen leads dining to its most primal demands:
serving heartwarming cuisines.
The design for dining area is no long over embellished.
Colors are no long feverish.
Lines are not complicated anymore.
Dining can be more calmed.
Immerse in the space.
Time seems to freeze
Jigsaw pieces of flavors,
welcome to PIZZA OSTERIA





Memories should not dwell in the past. Replace jigsaw pieces, and a new landscape is presented.



1F PLAN

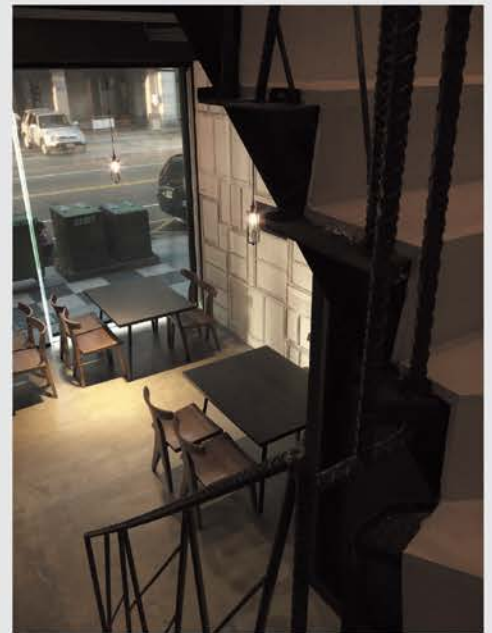
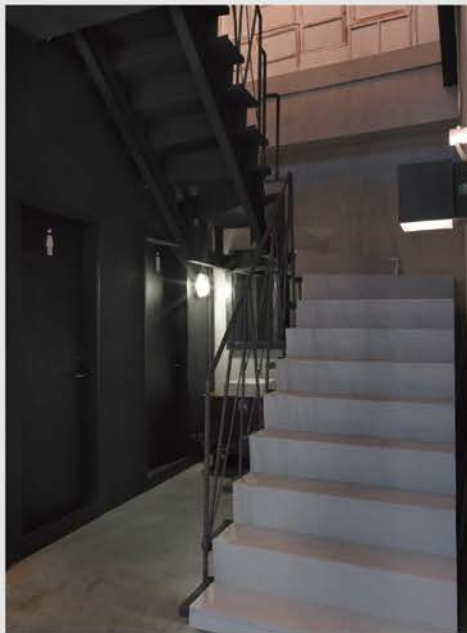
Deliberately, the most common objects in our daily life are placed in a different sequence.

The disrupted norm refreshes memories and brings them to the present.

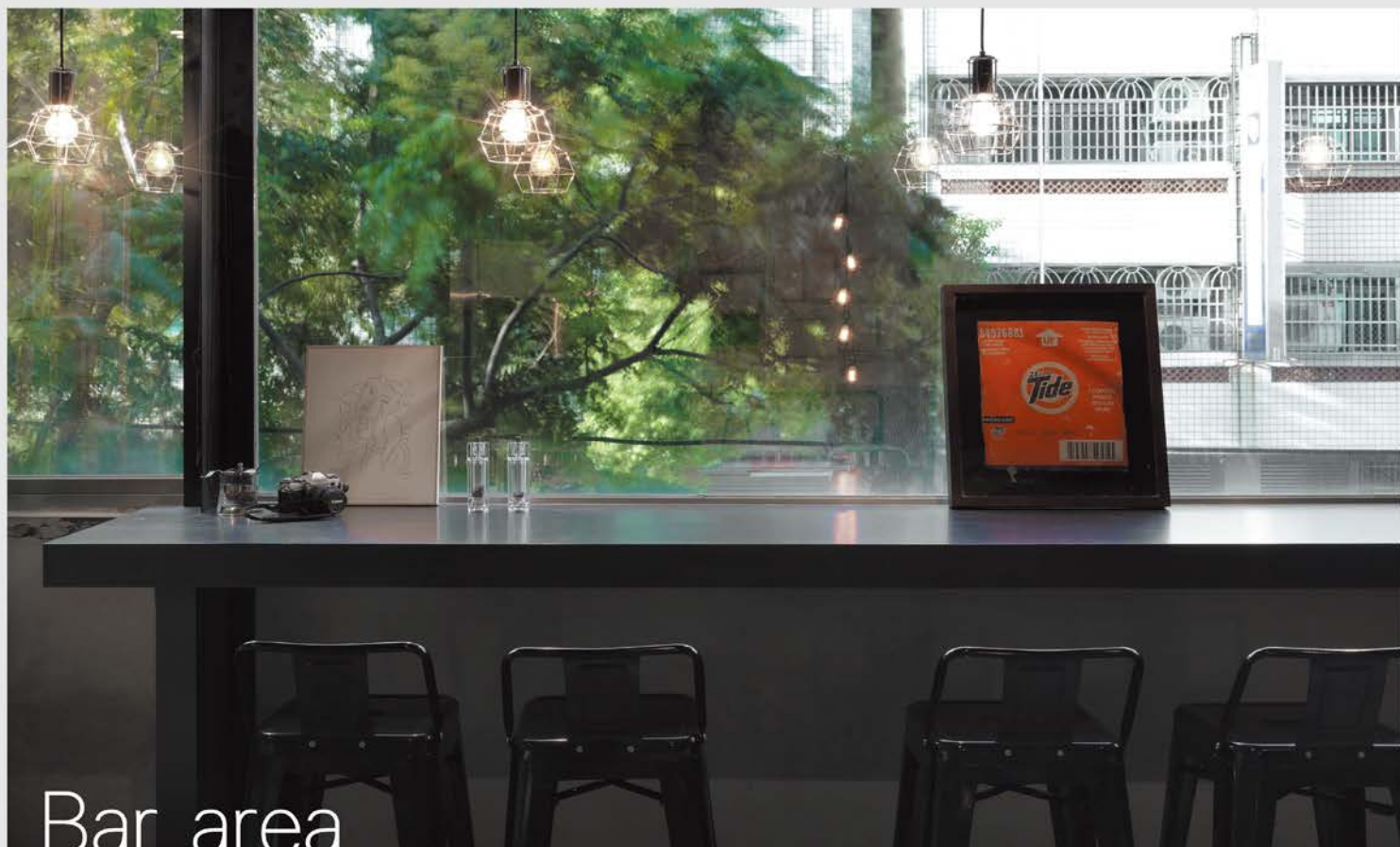
A new potential state is interpreted in the space, and a momentum presented.

VIP seats by the window on the second floor are ensembles of various chairs delivering their reflection and empathy.

Each is unique, grouped in a harmonious hue.



Stairwell



Bar area

PUZZLE OSTERIA:

a reconstruction of reorganized "daily lives"

Identified in wall details and furniture setting are contours of routines and whispers of reminiscence.

Frayed features transformed into a new form and spread out.

拼圖食庫

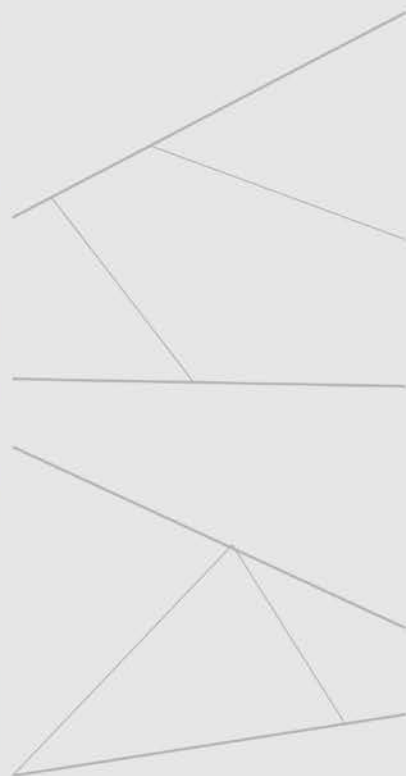
由"日常光景"拼湊並再構成。

從牆面細節到傢俱的擺設均可見，

日常生活的肌理、記憶的呢喃

由舊的面貌蛻變成一種新的形式蔓延。





80坪的空間裡
時間停止了
拼湊了記憶的拼圖
頂天立地的彩繪窯爐
靜止了鑿面水泥柱體
禁止了老舊窗戶繼續斑駁
空間的主體以灰色帶起了漣漪
黑與白不是絕對
灰 使黑與白更加曖昧
灰 讓黑與白重新排序

佔了3分之2的廚房
使餐廳回到最原始的需求
做出溫暖人心的料理
用餐區的設計不再過分的誇飾
顏色不再那麼強烈
線條不再複雜
用餐時可以更加沉澱
沉浸在這空間
時間彷彿停止
拼湊味道的拼圖
就是拼圖食庫

