

TID 2013 Award
Taiwan Interior Design

居住空間/複層

The TID Award of Residential space / Multi Level

半山建築

Semi-mountain Architecture

楊煥生設計事業有限公司 YHS

STUDIO ARCHITECTURE INTERIOR DESIGN

主持設計師
Chief Designer

郭士豪 STEVEN KUO

協同設計師
Co-designer

楊煥生 JACKSAM YANG

攝影者
Photographer

劉俊傑 JAY LIU

半山建築 Semi-mountain Architecture

The building is located in Bagua mountain mesas, vast horizons, overlooking the central mountain range, also overlooking the Maolou valley, the quiet elegance of culture and customs, along with Taiwan's modern transport system and convenient communication network, made this semi-mountain connect to the urban very convenient.

When the owner commissions to design the new house, nearby this building is a large low tea plantation, hope when construction was completed, the owner could also enjoy this view inside the house.



這棟建築位於八卦山台地，視野遼闊，可以遠眺中央山脈群山，也可俯瞰貓霧溪溪谷，寧靜優雅的文化與風土。隨台灣現代化交通系統與通訊網便捷，在這半山與都市接軌卻無比方便。業主委託設計新家時，這棟半山建築附近均是大片低矮茶園，希望建築落成時能在室內也能欣賞這份景緻。



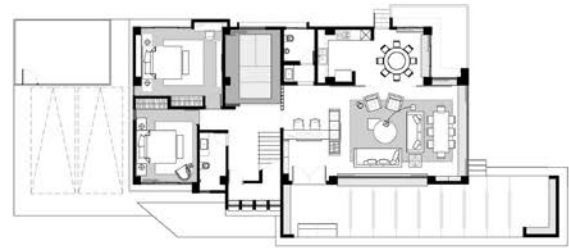


In this design of the building, the length is 30 meters and the center is the main two-story building, the use of overlapping, composition and fusion composed by extending the right level of secondary space 16 meters times 3.5 meters outdoor rain shelter and the left side is 12 m long steel garage ceiling to form a horizontal long white building massing.

在設計上建築物總長30公尺，是以中心二層建築量體為主，利用重疊、錯融及融合構成方式組成。

由次要空間水平向延伸右邊16米*3.5米長的戶外雨庇

及左側12米長鋼結構車庫頂棚形成一水平長向白色建築量體。





Interior architecture is constructed by concrete walls with water , indoor cypress screens and outdoor Lone Pine cypress, the formation of light conversation, building construction method is simple and clean but still pay attention to the importance of architectural lighting , ventilation and landscape of micro- climatic effects . Natural flow in the intervening is not only these natural elements, but including the people's moving, functional layout , the angle of sight and the body's feeling ; this smooth space could gestate a person lives in mid- mountain physical environment, and with the space current subtle changes dweller' s spirit changed.



室內建築以清水混凝土牆構築，室內檜木屏風與室外的孤松，形成光影對話，建築構法簡單及清淨但依然講究建築所重視的光影、通風與地景的微氣候效應。自然流動在其間的不只這些自然元素，包含了人的動線、功能的布局、視線的角度、身體的感觸；這一流暢的空間可以孕化一個人身處半山環境身心，並隨著空間文法的流動微妙的改變居住者的心靈變化。



Here, space is the background , life is the subject, using a simplified pattern and moving lines stretched wide spatial distance ,
in order to enrich paved level , hard to look into every movement,
multi-channel screens specially configured to open and close the actual situation
defined space in order to define the field inside and outside property .



這肌理曼妙流動於寧靜光影空間之中，
空間是背景，生活是主體，
利用簡化格局與寬闊動線拉長空間距離，
為了鋪成豐富層次，
讓人難以一眼望盡屋內所有動態，
特意配置多道屏風界定空間虛實開合，
藉以定義場域裡外屬性。



