

TID 2013 Award
Taiwan Interior Design

居住空間/複層

The TID Award of Residential space / Multi Level

寂靜草廬

THE THATCHED

諾禾空間設計

noir design

主持設計師

Chief Designer

翁梓富 Jeff Weng

協同設計師

Co-designer

蕭凱仁 Kyle Xiao

攝影者

Photographer

小雄梁彥 shao shong liang yen

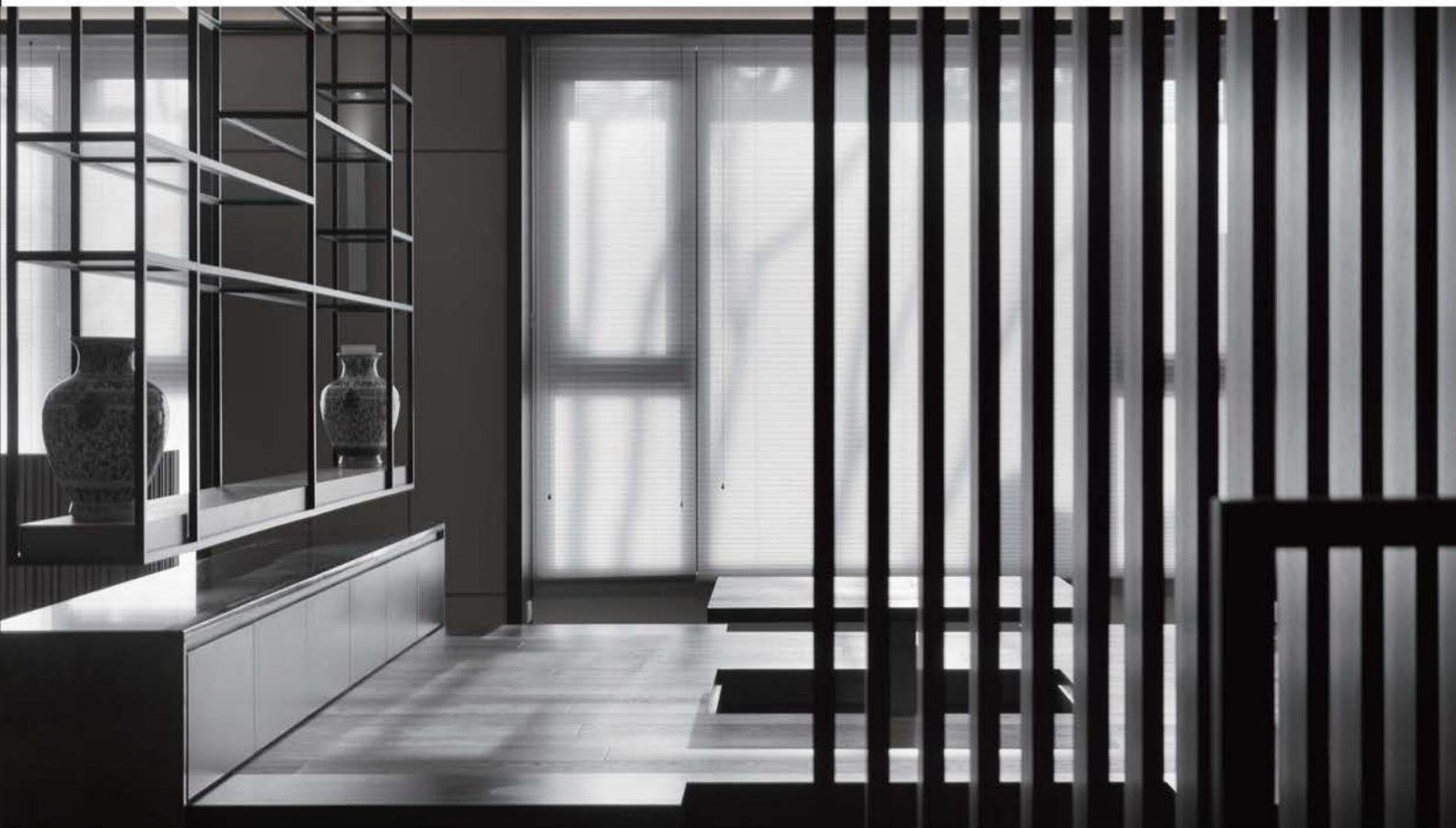
| 寂靜草廬 |

THE THATCHED



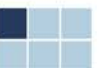
創作靈感是來自於葛飾北齋的「富嶽三十六景—信州諏訪湖」
將畫作裡的樹、山、湖泊、草屋、小船轉換為材質應用

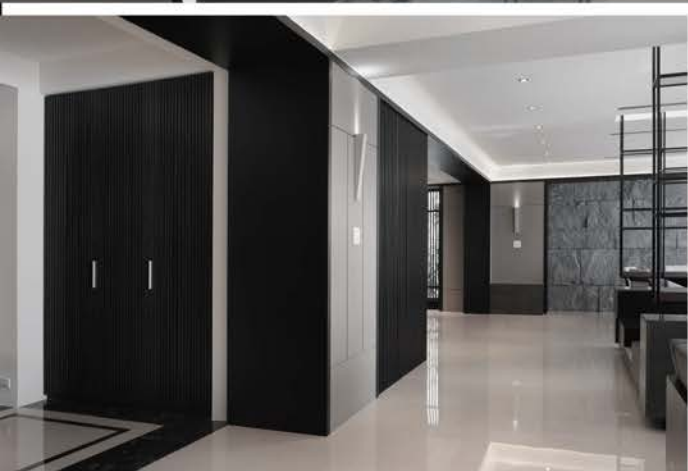
The concept is inspired by Katsushika Hokusai's "Thirty-six Views of Mount Fuji- Lake Suwa in Shinano Province".
The trees, mountains, lakes, thatched and boats of the paintings are converted into the material application.



透過島或亭的空間概念，來作為整體配置的焦點，看似孤立卻又與周遭環境融合；
空間與空間之間的互動關係也因空間沒有明確定位，使互動關係多一些曖昧，藉此來誘發新的生活經驗

The island or kiosk- design concept is as the focus of the overall configuration which seems isolated but blended with the environment.
The interactions among spaces are ambiguous because of the unclearly defined rules which induce a new life experience therefor.

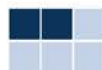


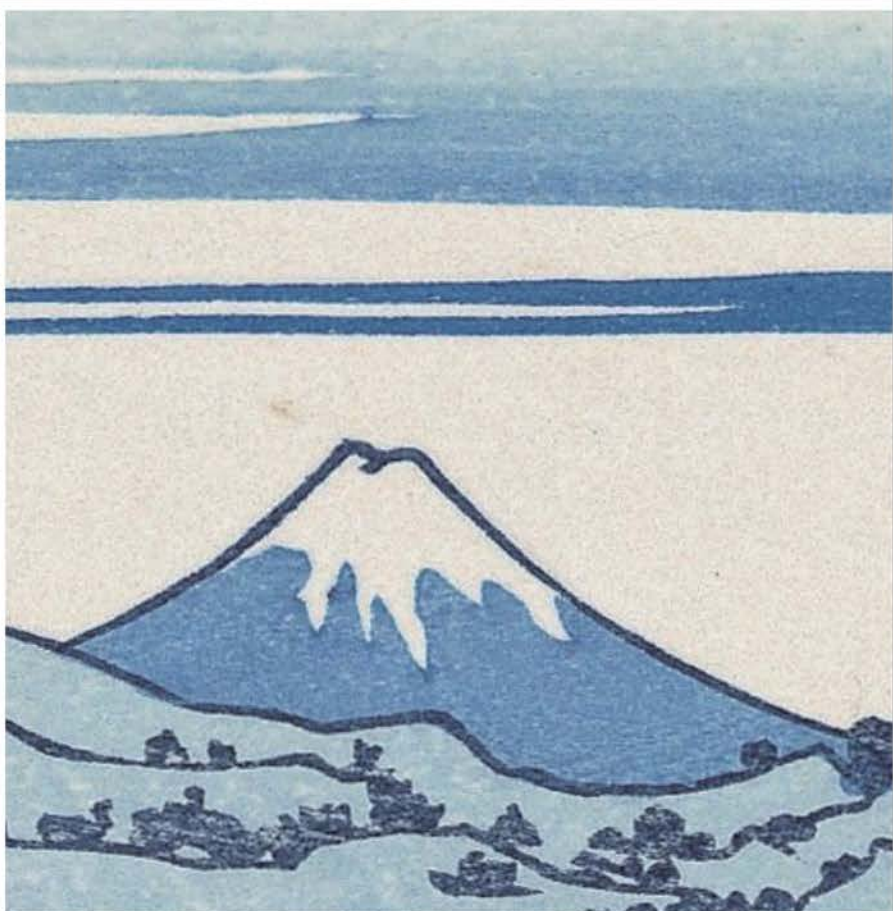
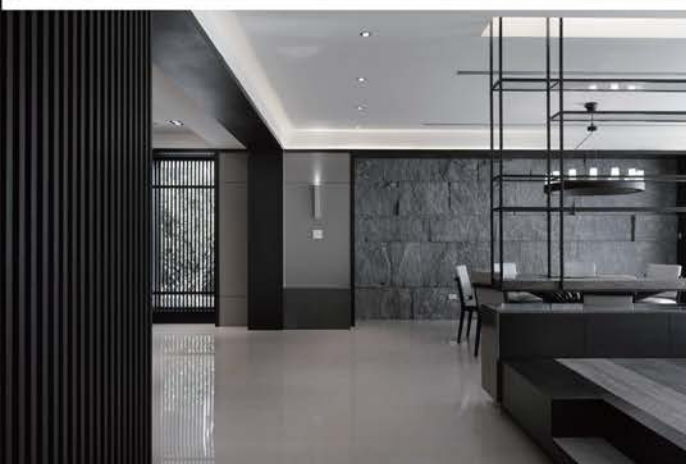
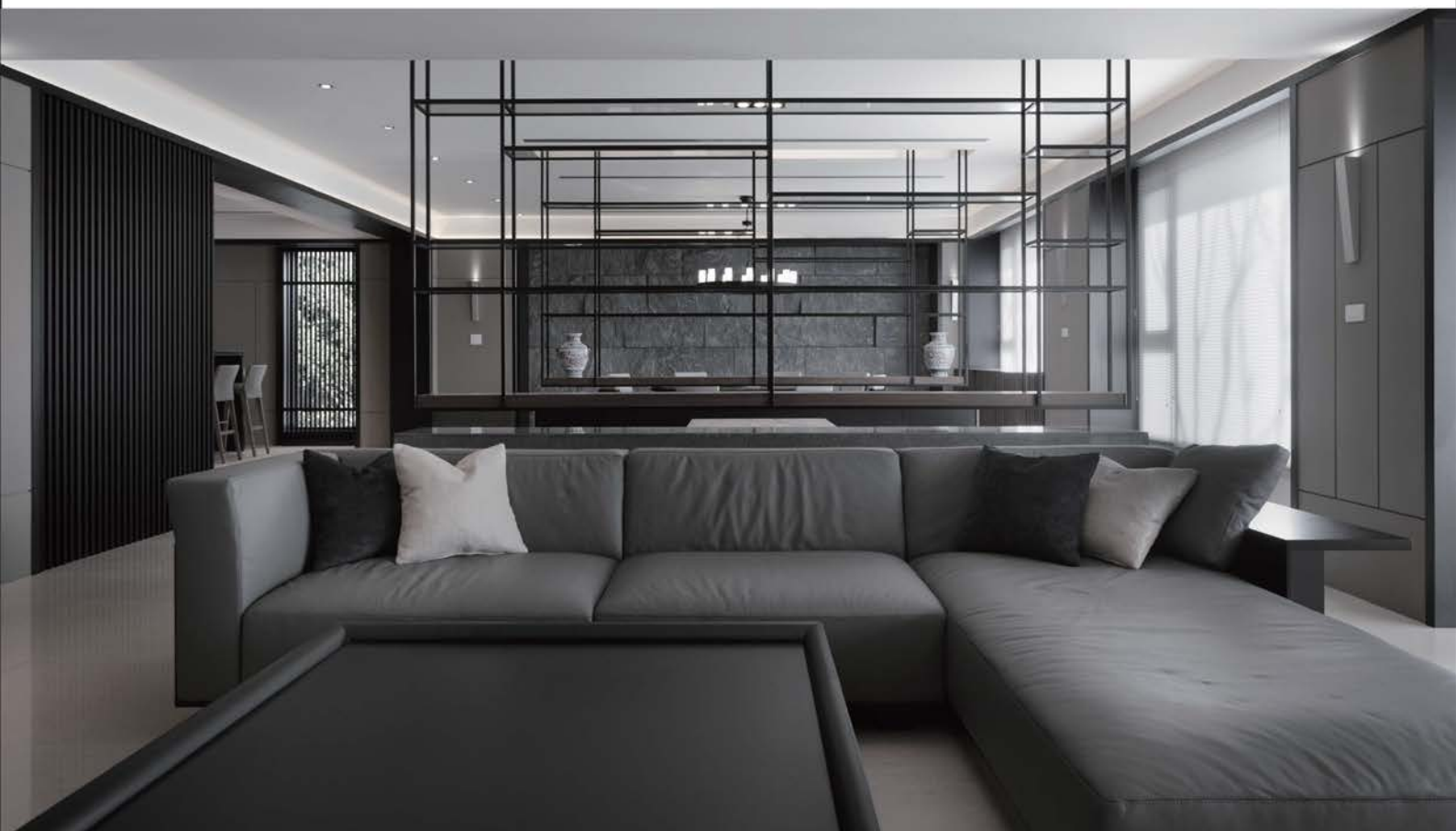


樹 | TREE

黑色垂直構件、黑色格柵、黑色壁板是「樹」的意象。

The black vertical member, black grille and black siding symbolize "Trees".

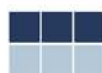


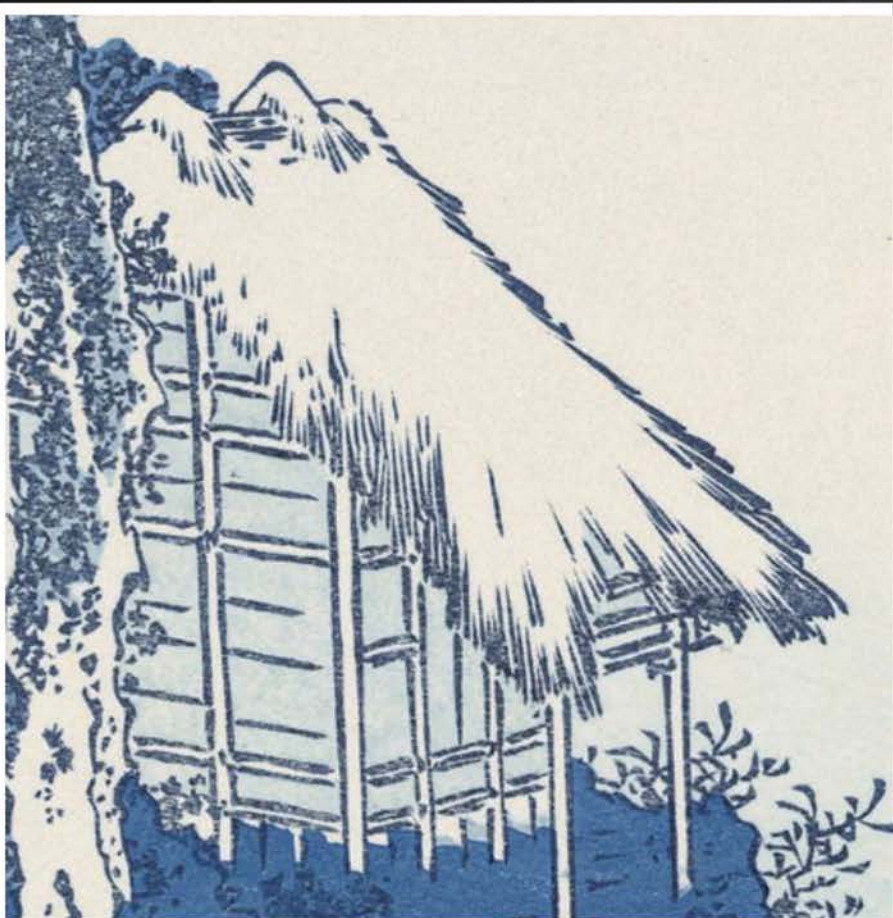


山 | MOUNT

灰色粗獷、不規則肌理的石皮及玄武岩是「山」的意象。

The gray rough, irregular texture and basalt symbolize "Mountains".



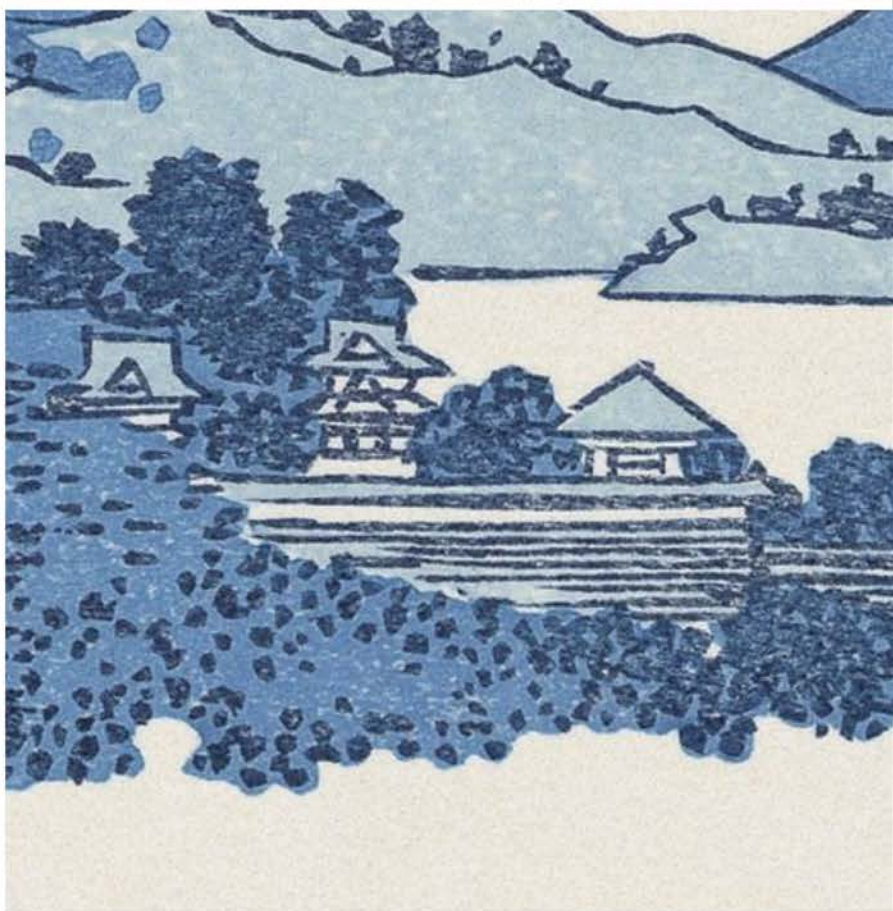


草屋 | THATCHED

架高木平台及黑色框架是「草屋」的意象。

The elevated wooden platform and the black frame symbolize "Thatched".



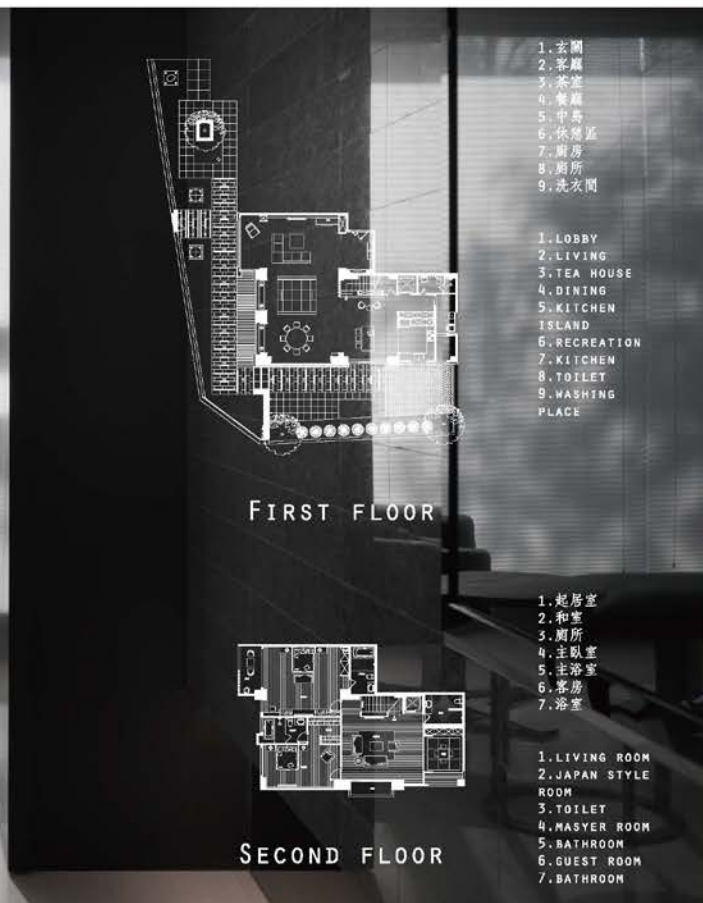


湖 | LAKE

米黄色大理石地板是「湖」的意象。

The beige marble floor symbolizes "Lakes".





小船 | BOAT

獨立一隅的單品是「小船」的意象。

The deck chair and the urns at independent corner symbolize "Boats".

