

TID 2013 Award
Taiwan Interior Design

居住空間/單層

The TID Award of Residential space / Single Level

一分三

One To Three

創研空間設計有限公司

Create + Think Design Studio

主持設計師

Chief Designer

何俊宏 Arthur Ho

協同設計師

Co-designer

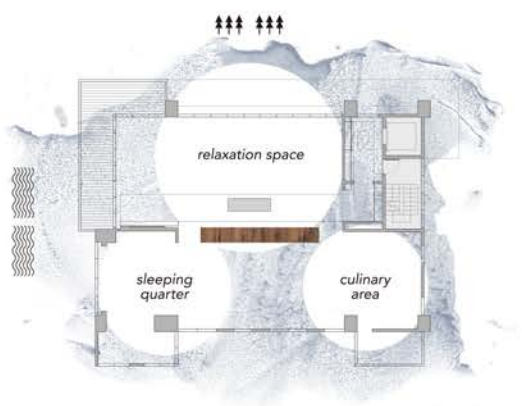
張志焄 Nicole Chang

周盈 Ying Chou

攝影者

Photographer

李國民 K.M.Lee



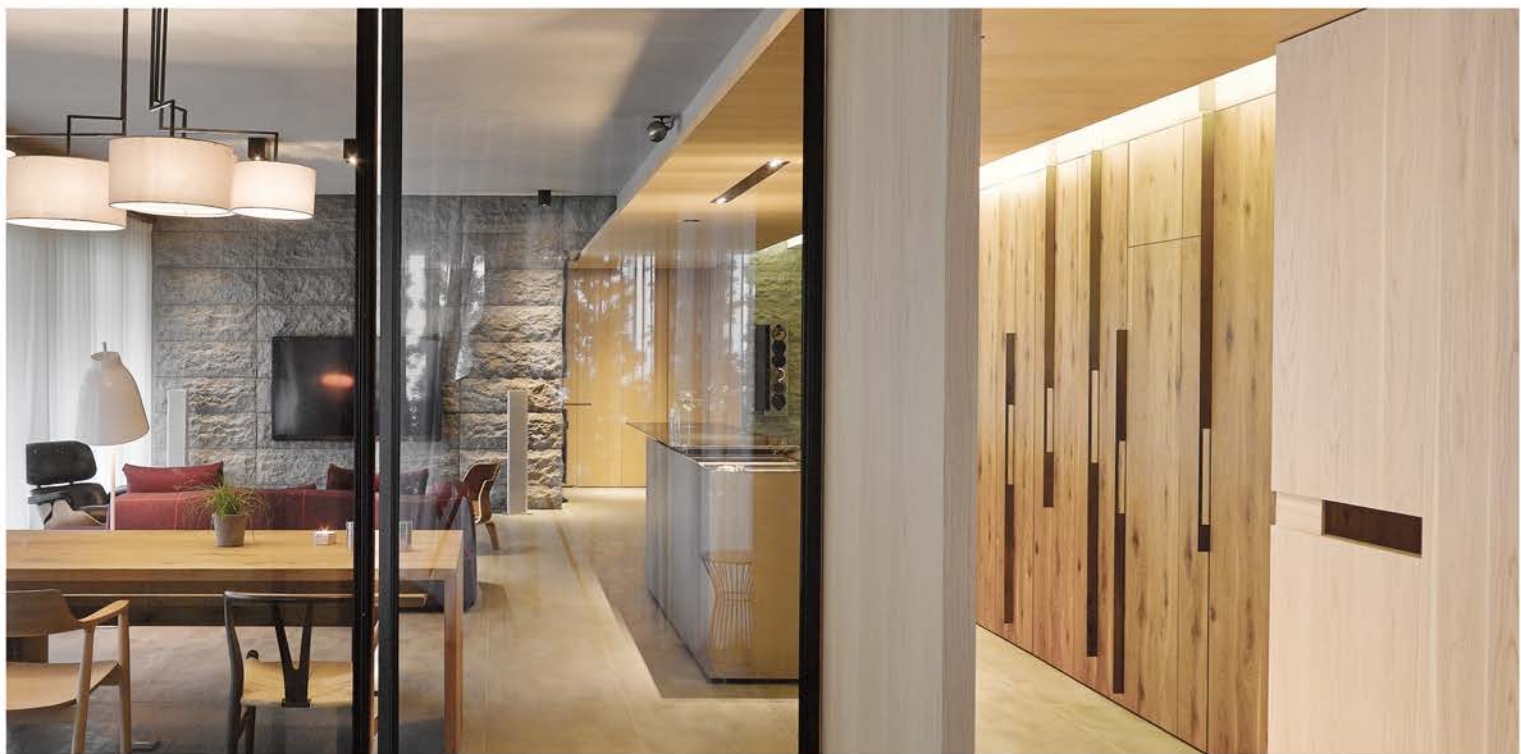
基地臨基隆河 前方有小公園
被 L 形的落地窗環繞
有陽台可遠眺基隆河 鳥瞰小公園

空間約是個正方形 用一長木櫃把空間分成三區
被 L 形的落地窗環繞的放鬆區
主人和客人休憩的睡眠區
廚房和酒窖組成的烹飪區

one to three

Desirably situated in proximity to Keelung River and a small park directly in front, the property is enveloped on two sides by an L-shape sliding glass doors, with a balcony to enjoy the view of Keelung River in the distance or the greenery of the park down below.

As the total floor plan resembles approximately a perfect square, the long wood cabinet transfigures this single space from one to three distinctive sections: the relaxation space wrapped by the sliding doors, the sleeping quarter of master and guest bedroom, and the culinary area of kitchen and wine cellar.



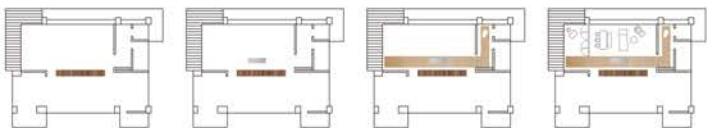
↑↑ 梯廳入口延伸至書房

↑ 書房入口

意放鬆 *relaxation*

長條木櫃前的區域被落地玻璃和窗紗圍繞著，其餘的天壁地都是水泥質感，宛如一水泥盒子；在長條木櫃前置入一不銹鋼塊體，是放鬆區的焦點，以木質紋理，從壁到天花的□形框架圍塑不銹鋼塊體，從梯廳入口延續至書房；不銹鋼塊體可伸展為一中島吧台，背後長木櫃可以不同形式開啓門片，門內負載著音樂、美酒、咖啡、輕食的功能。不銹鋼塊體前方鄰著落地窗依序是沙發區、用餐區和以四片金屬框灰玻璃

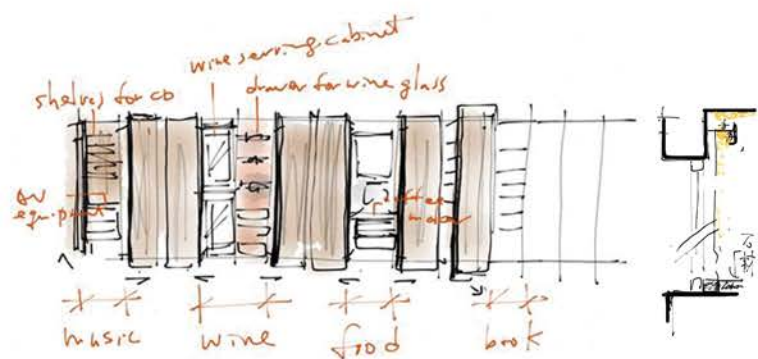
門區隔的閱讀區；金屬框玻璃門可開閉，開時將放鬆區分為兩區，開時讓放鬆區完全敞開，環繞放鬆區的L形的落地窗及窗外綠意完全連結。這是主人和朋友、家人放鬆歡樂的地方，享用美食、好酒的空間，這水泥盒子承載著生活的記憶和美好！





↑↑ 木櫃把手
↑ 中島吧台

↑↑ 打開的中島吧台及長木櫃



Lounging in front of the cabinet structure and facing out toward the glass doors, this space of relaxation is encased, like a box full of surprises, by concrete ceiling and floor. Serving as the main visual focus and a contrast in texture, the upside down U-shaped stainless-steel central island adds cool sexiness to the warmth from the grain pattern of the cabinetry. The warmth of the wood stretches from the entrance to the reading area.

As the steel structure expands into an elongated bar, the doors of the cabinetry open in various ways to reveal the multi functions hidden behind, such as music equipment, wine storage, espresso machine, and light fare food preparation counter.

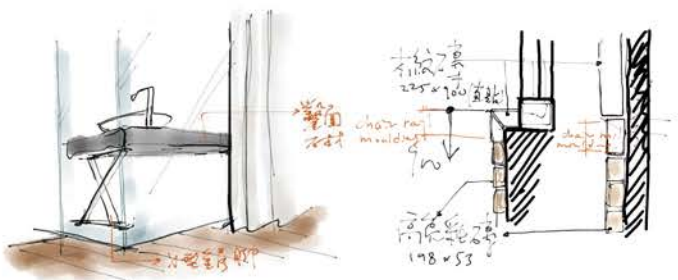
The steel structure links the three sub-sectors of the relaxation space: living room, dining area, and reading area, which is partitioned with metal frame accordion glass doors. When closed, the reading area is a distinct and separate section off the relaxation space. When opened, the entire space becomes a great room, connecting with the greenery outside through the L-shaped sliding glass doors.

It is a place of exuberance where the host, with his friends and family, can enjoy exquisite food and fine wine. This concrete box reflects and records the moments of living.



↑↑ 睡眠更衣區入口 ↑↑ 鑿面石材檯面
↑ 臥室及沐浴空間

身睡眠 *sleep*



主臥室以電視櫃切割出睡眠區和更衣區，木質元素延伸串連臥室和沐浴空間，並以透明玻璃區隔，營造出空間的連結感。復古貓腳浴缸與鑿面石材檯面，X形金屬桌腳帶出義大利莊園趣味！

穿過客房來到烹飪區....

The media center cleverly separates the bed and closet in the master bedroom. Wood element fuses the bathroom with the sleeping area, yet the clear glass subtly divides the different functionalities. The combination of classic footing of the tub, rugged masonry counter, and the Roman X desk legs creates an aura of Tuscan villa.

From Sleep to Culinary

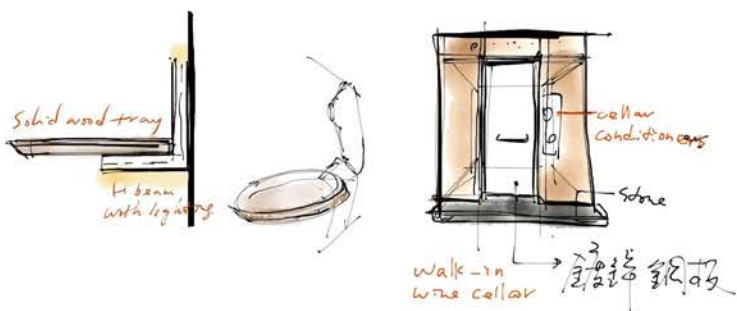


↑↑ 烹飪區
↑ 橢圓實木餐檯 ↑ 酒窖

口烹飪 *culinary*

烹飪區白淨如專業廚房，還有宛如侍者端著拖盤的橢圓實木餐檯和盛著滿滿男主人收藏的酒窖，當友人來時，美食美酒就從這溢注到水泥盒子裏！

The culinary area is as pristine as the kitchen of a three-star Michelin restaurant, further enhanced with an oval table made from solid wood and a wine cellar containing the owner's immaculate wine collection. When the owner hosts a party, sumptuous banquets and luscious wines flow from here into the concrete box.





C'est la vie