

TID 2013 Award
Taiwan Interior Design

居住空間/單層

The TID Award of Residential space / Single Level

矩形塗布

Rectangle

水相設計有限公司

WATERFROM DESIGN CO.LTD

主持設計師

Chief Designer

李智翔 Nic Lee

協同設計師

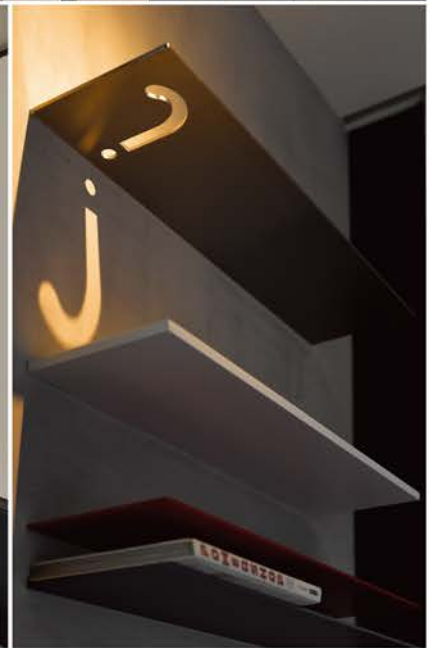
Co-designer

陳曉伶 Joanne Chen

攝影者

Photographer

岑修賢 Sam Tsen



RECTANGLE

喜好獨處窩居的感受，將制式長形家屋蔽障去除，創造“角落”。一個個小矩塊放入室內大方體，單元在組合與獨立間造就彼此的分隔與關聯性。居者大大小小的矩塊中，感受“轉折，開啓，進入”體驗不同的功能性，滿足心靈既需要開闊如天地也需觀照自我的必要性。

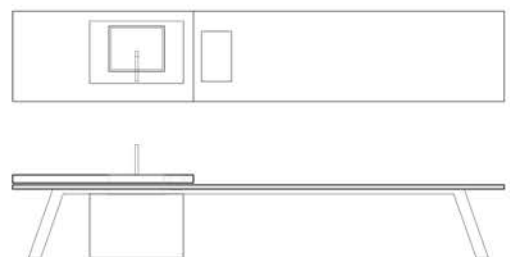
Designer created the layout by dividing the plan into many small rectangular shape. The rectangular units connect the relationship of two areas and also divide the space into many corners, which is the secret place for the owner. Through walking in the space, we not only enjoy the broad view but also satisfied with the inner heart in a leisure way.

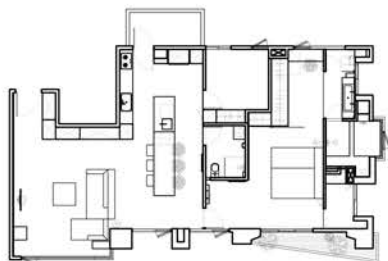


LIVING+DINING

兩條主動線切割出平面圖的佈局，橫軸區分出公共與私人兩大區域，縱軸緊鄰落地窗一側，乃連貫公私區域的光廊，使得自然光的散布深度更具表情。最重要的主牆靈感來自sou lages的黑色基底創作，隱藏門設計將軸線整理成一幅寬約7.5公尺長的黑色畫布，各種機能家具適得其所擺放，使用者在生活一舉一動自然定義空間。

Horizontal circulation divided the plan into public space and private space. Vertical circulation connects living area and sleeping area by a hallway that is filled with sunlight. The main wall's design concept is from the painting of Soulages. For making a dramatic view, designer set a huge dark color wall to form a border between public and private.







SLEEPING • BATHING

灰色萊姆石的床頭背牆是空間的端景也是具機能性的中介空間，區隔出私密性的臥榻空間及半開放衛浴區域，並以大拉門區隔睡眠區/更衣區，使空間藉著穿透性的材質與半開放的空間性質獲得自由，拉門一開整室明亮寬敞，一闔成為令人安心的睡眠空間。

Inside the master bedroom, designer set only one partition wall to defined a lounge corner, bathroom, fitting room and bedroom. And there appear several rectangle spaces confined by the partition wall; the corner space was turned into a space for a moment of relief.