

**TID** 2013 Award  
Taiwan Interior Design

居住空間/單層

The TID Award of Residential space / Single Level

New Essentialism

唐林室內 + 亦果建築

IQ INTERIOR DESIGN CONSTRUCTION CO.,LTD

主持設計師

Chief Designer

廖韋強 JOHN LIAO

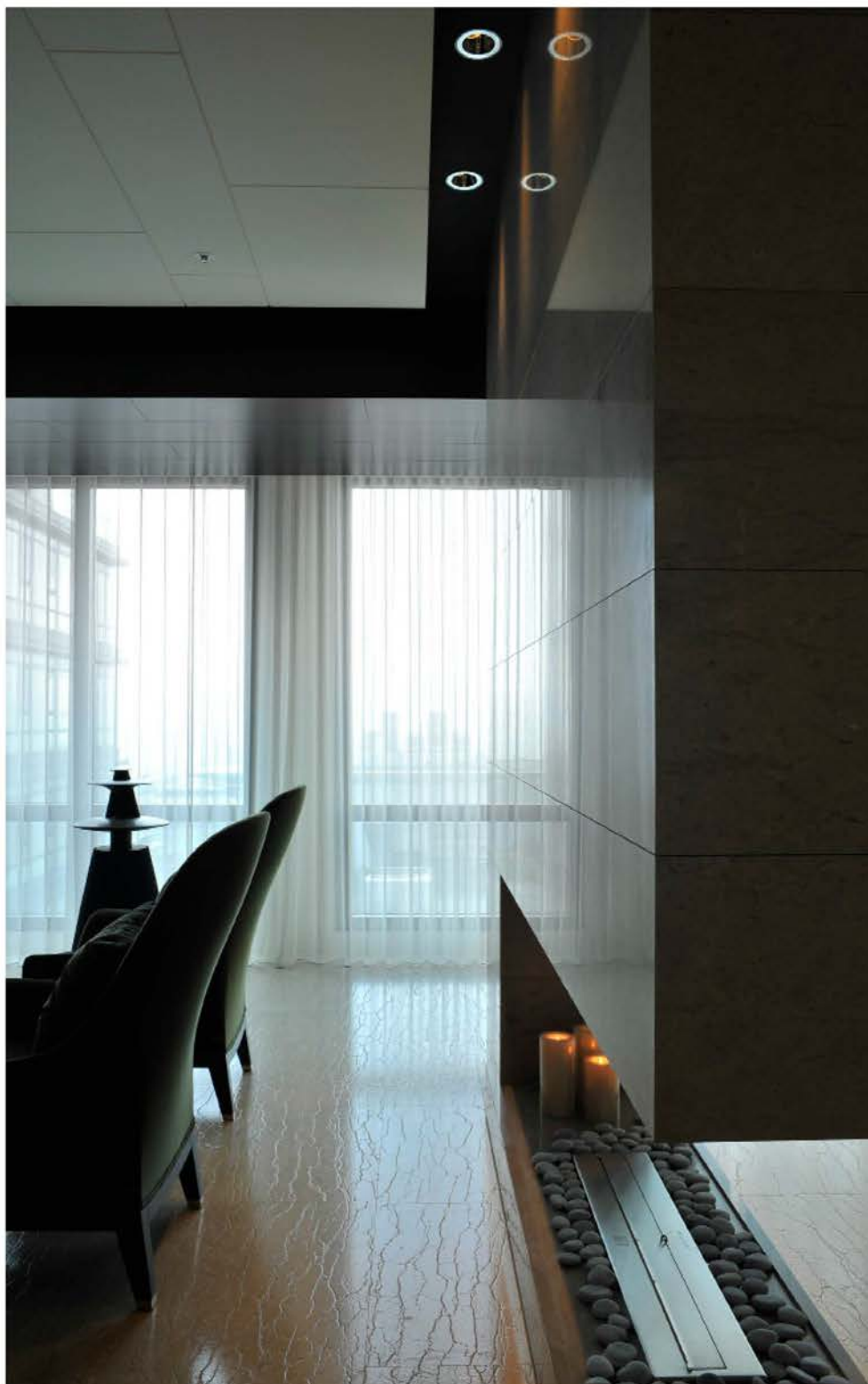
湯珍珍 JENNIFER TANG

攝影者

Photographer

古禮維 KOLEII

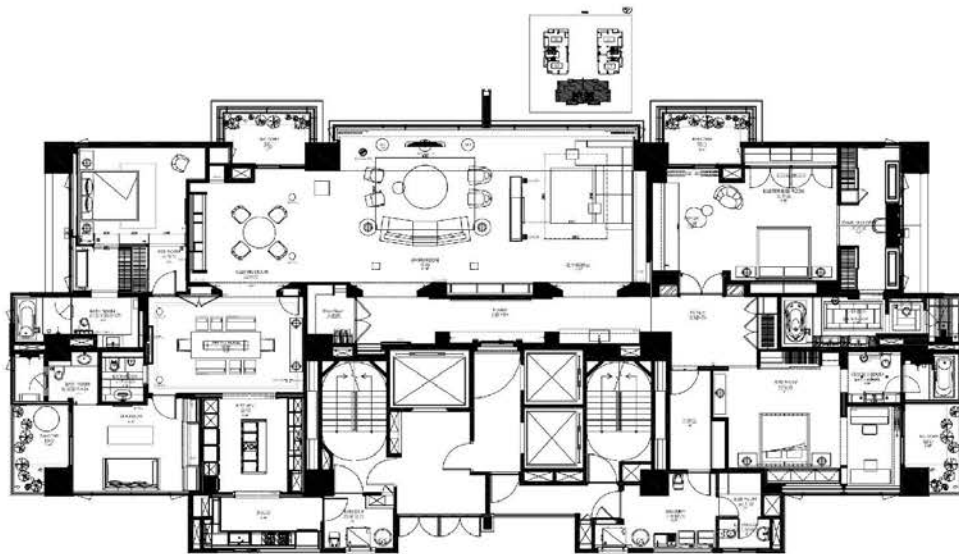
# NEW ESSENTIALISM



以時尚閱讀這奇妙旅程，簡潔中打造全新曼哈頓生活風格，彷彿洗滌心靈之後強大的自我力量，時尚而迷人。

The lighting changes in different places due to different angles and layouts. With the lighting, you can get to feel the intimacy with the environment, and that's one of the main themes about this case.

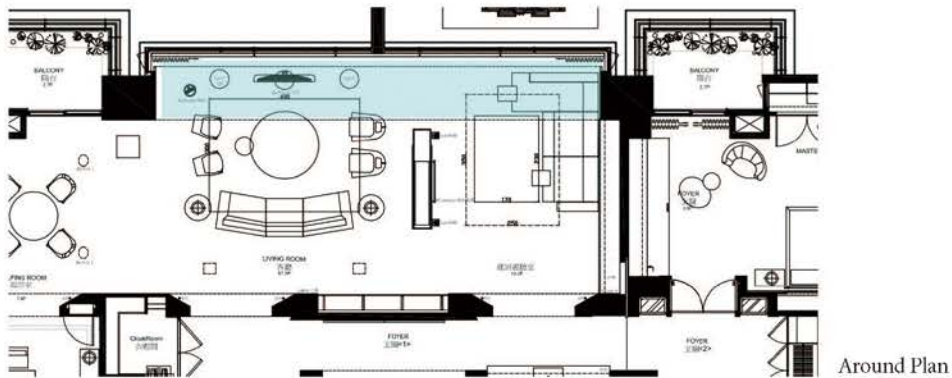
The designer jumped out off the box and has delivered a clean design, full of humanity and personality. The amazing view from outside through the big window gives it so much green energy for inside. It's like the house is blocking the cold and noisy city in the outside, totally calm and full of warmth and love.



PLAN



The entertaining room also gets the designer's full attention. Each family member feels and experiences differently by all kinds of sound. And that makes it full of possibility and fun. To create a joyful entertaining space for this case is one big challenge. Also, with different texture, surface finishes and proper layout, all the furniture in here pops out.



Overall speaking, life style and personality of the host's should be carefully delivered in the design, and then the connection of each room, to the whole picture, simple and clean, totally unique and private.

貫穿環繞的動線，連結居間的活動層次，，單純自然‘環繞延伸’



The layout and the lighting are the key points and that's what a design got to have in advance. The lighting comes in 2 ways, naturally and artificially. Only with a proper layout would it make the lighting completed in the house. Structurally speaking, it's coordinated perfectly with proportion. Further more, you get to see the personality of the host's, full of charm and positivity.



The proportion of the lighting and the material is crucial, whether it's warm, cold, plain or multiple, it all depends on the material. With different material, the transformation in each area, that all should be decided in the first evaluation between the designer and the client.

Using a beautifully-made cabinet as a main piece in this minor area, and with the texture and simple lines it has, it becomes the attention in this space.



華燈初上，屬於這城市的夜晚正要揭幕。



空間可以盛裝光線，傢具及生活方式，經歷，生活，你眼中世界細節。

which becomes the main theme of the Golden Pavilion. This type of omen is a non-existent one, it is completed in the beauty of the details, thus on-existent omen. which becomes the main theme of the Golden Pavilion. This type of omen is a non-existent one, it is completed in the beauty of the details, thus on-existent omen. which becomes the main theme of the Golden Pavilion. This type of omen is a non-existent one, it is completed in the beauty of the details, thus on-existent omen. which becomes the main theme of the Golden Pavilion. This type of omen is a non-existent one.





The American style is all about modern and cosmopolitan, and we get to see it all the time. There is no boundary in it, so the designers can mix it with classic, country and tribal elements to deliver it as a clean and edgy design.  
生活中瞭解彼此的品味，在她的多元生活，舒適，實在而明確，，這就是我存在的價值。



At last, "emphasis", is pretty much similar to "contrast" in some way. And the only different is that with the guide of the space, the furniture or the decoration always gets your attention, using the same or different characteristic to make it unique. But