

TID 2013 Award
Taiwan Interior Design

居住空間/單層

The TID Award of Residential space / Single Level

轉 疊合

over lapping space

均漢設計有限公司

KC design studio

主持設計師

Chief Designer

曹均達 Chun-ta Tsao

協同設計師

Co-designer

劉冠漢 Kuan-huan Liu

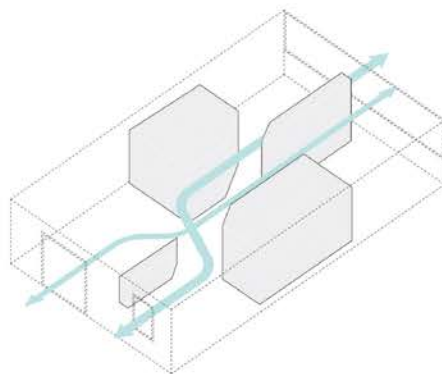
攝影者

Photographer

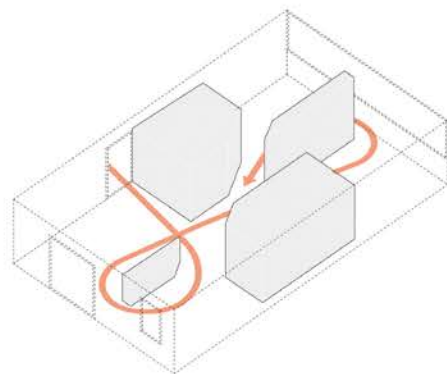
莊博欽 Ivan Chuang

轉疊合 Over Lapping Space

此案位於台北市天母溫泉區的社區住宅中，基地環境優美、空氣良好並有豐沛的自然採光，所以在設計上環境資源的導引是此案重要概念。由於基地為長型基地，前後陽台是唯一能帶入自然資源的出入口，所以在平面配置上以水平格局為出發點，如此，通風不順暢以及採光不足等問題便能解決，更能解決室內潮濕空間感狹小等問題。



Air



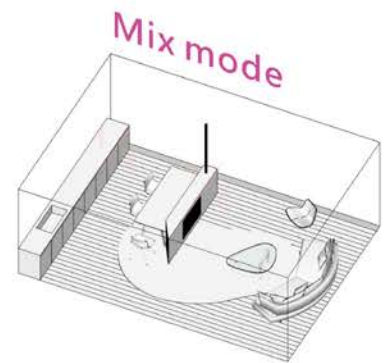
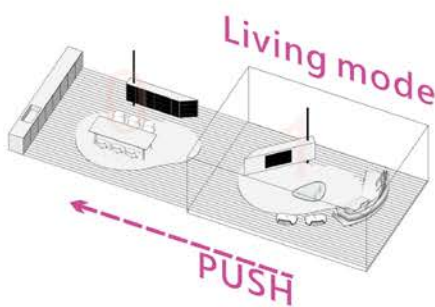
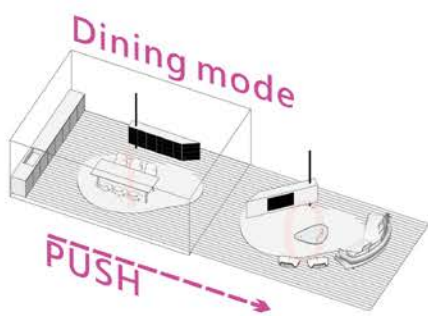
Circulation

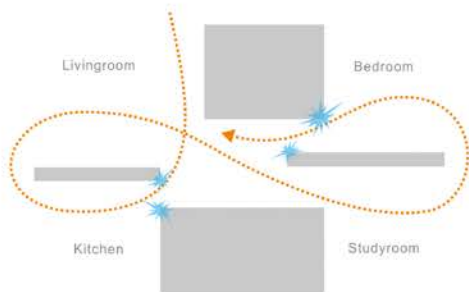
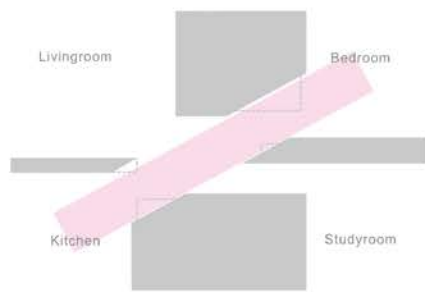




翻轉·重疊使用

能夠隨著心情改變配置以及未來性的考量是本案業主需要的設計課題。在22坪有限的空間中，利用可變動性以及空間領域重疊性的概念去滿足使用上的需求。在開放空間的部分，利用能翻轉180度的電視櫃去區隔客廳及廚房，但電視櫃必要時透過翻轉使客廳及廚房結合成且容納10人以上的休憩空間。





型式·自由動線

在動線的設定上也以看展覽般的自由遊走為概念，在自由動線設定這部分，是考量兼具收納和開放的空間的比例關係，同時要在動線運行上達到順暢，設計師以”切割”為手法在整個大空間上割挖出需要的動線尺寸，同時也刻劃出相當有趣的量體感。



Features rotating walls, allowing four rooms to be converted instantly into one open-plan space. The rotatable TV-partition can be turn in different angle. This function is design for living room and kitchen. Client can decide to become bigger dining area or living area by turning rotatable object.

Also The middle object is actually a big bookshelf, it divides study room and bedroom. Using slide door to save privacy needs. A part of bookshelf can be moved to study room. The idea of this function is to make these two rooms become one big master room.





In this space we using Dark timber floor to make three light-color objects standing out. Also made them in different height to present the connection between each objects. Using white color wall to focus at personal furniture and collection, because it could tell a story for itself also can present peoples character.

Designer not only focus at peoples living life also do care their relationships. he open plan design can bring connection for the family, even in different room still can see each other. So it could bring more conversation in this space.

