

TID 2013 Award
Taiwan Interior Design

居住空間/單層

The TID Award of Residential space / Single Level

複述

Multiple Depiction

近境制作設計有限公司

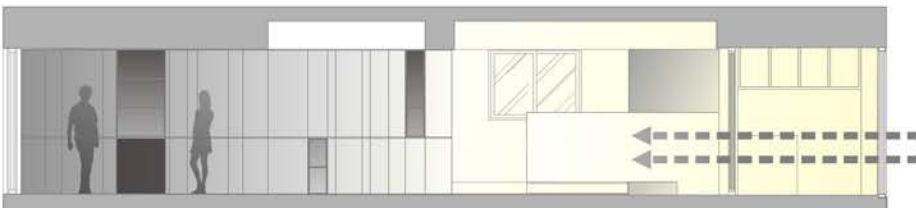
DESIGN APARTMENT

| | |
|-------------------------|------------|
| 主持設計師 Chief Designer | 唐忠漢 T T |
| 協同設計師 Co-designer | 方奕棠 tito |
| | 王正行 W.W |
| 攝影者 Photographer | 岑修賢 Sam |
| | 高伊芬 Yvonne |



複述 Multiple Depiction

光線和色彩是空間創作重要的手法，藉由光影和色彩來傳達思想和情感，操作光影變化與使用者行為產生相關性與互動性。光會依循量體虛實不斷的重新排列產生連續性變化陰影地帶，人的空間行為因機能配置上需求而透過身體的移動體驗空間，空間的虛無透過時間的變化，兩者相互編織成記憶裡的實存



Creation of light and color is an important approach to space, with light and color to convey thoughts and emotions, the operator lighting changes associated with the user behavior and interaction. The amount of light will follow the actual situation constantly rearrange the body produces continuous changes in the shadow zone, human spatial behavior due to functional configuration needs mobile experience through physical space, nothingness of space through time changes, both woven into the memory of each other Existence



起始

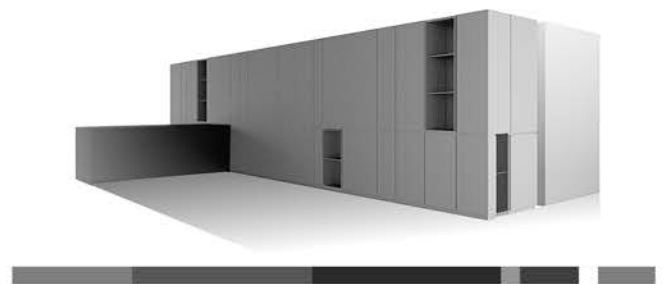
設計方案的開始在預算以及基地條件上有需多限制，我們運用錯置交疊的天花量體，整合橫互在餐廳上方的樑位，讓天花造型與立面分割形成一個完整的比例空間，解決原本在空間上低樑的先天條件，使其轉化為一現代簡練的空間氛圍。

Design Concept

In order to solve the restriction of budget and site condition, we applied overlapping ceiling framework system, to integrate intercrossing beams above the dining area, bordered ceiling subtly link with facade, form into proportion, The disadvantage of lower beams, since turns into a modern spacial ambience.







Lingering

The axis has all of the space linked up, so that the route of movement generates a kind of space transformation for continuation and lingering.

Senses

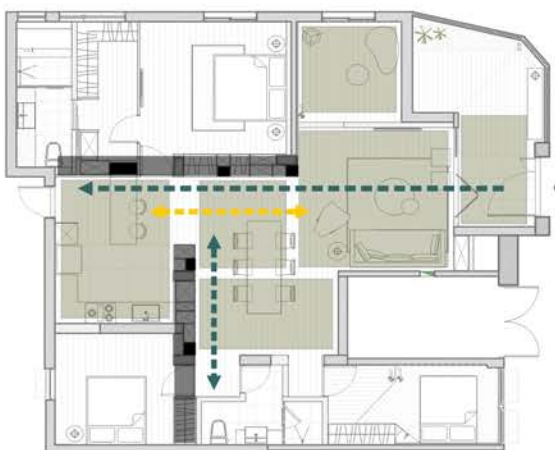
For timing revealed in space from silhouette changes, in addition to linkage of body weight and objects intermixed in space, making space and individuals to carry out dramatic alteration. Gray color of low saturation is made the primary hue of coloring for the entire space, with nothing but lightness of shadow to hold up the heaviness of the coloring hue.

Frame-shape

The edge changes formed by frame sides of the body weight have turned silhouette to create rhythms, making 3-D space to generate continuity. And made many minute silhouette by the enclosure of body weight, while frame-side ceiling engenders much flowing shadow as of repetition.

Substantial existence

The hidden cross-axis has suggested the definition of space, with body weight located upon X-axis, thus shaping up the confines of life domain; as for combination of body weights upon Y-axis, it introduces the entire space sequence.



■ 感官

光影變化呈現空間的時間性，加上錯落空間中的量體物件串連，讓空間與人進行著戲劇變化。低飽和度的灰色是整空間的主色調，唯有影子的輕，才可撐起色調的重。

■ 滯留

軸線將整個空間連接，而動線產生一種空間轉換的連續與停留。

■ 框形

體框邊形成邊緣的變化讓光影產生律動，使空間立面產生連續性讓許多細微的光影在閉合的量體，以解決探位錯置橫互於餐廳上方的先天條件，同時使得框邊天花因重複性產生了流動的光影。

■ 質存

隱藏的十字軸線暗示空間的界定，座落在X軸上量體，闡明出生活場域，而Y軸上的量體相互組合，引導整空間序列。量體上的開放櫃，重複上下錯落，產生動與靜的狀態。