

TID 2013 Award
Taiwan Interior Design

居住空間/單層

The TID Award of Residential space / Single Level

重疊元素

Replace Elemential

近境制作設計有限公司

DESIGN APARTMENT

主持設計師

Chief Designer

唐忠漢 T T

協同設計師

Co-designer

曾祥坤 Otis Tseng

攝影者

Photographer

近境制作設計有限公司 DESIGN APARTMENT



EN HOME

New colors
New colors
olive
olive
KELLY HOFFENHOME

New colors
SWIFT

BRUNNEN
The Most Excellent
ARCHITECTURE IN THE TWENTIETH CENTURY
Journey to the West
Weekend living
Milan
Milan
Milan
The Most Excellent
Weekend living

Personal
Personal
Personal
Personal
GUINNESS
DUMAS



WOLFF KLOTZ
WOLFF KLOTZ
WOLFF KLOTZ

HOME
ARCHITECTURE IN THE TWENTIETH CENTURY
Weekend living
Weekend living





吧檯元素是餐廳是廚房亦是生活的主體
臥榻元素是沙發是起居亦是生活的角落
層櫃元素是展示是儲物亦是生活的記憶
空間元素原是單一的
依著空間的屬性多層次的交疊
組合出空間機能各個面向

Bar element plays both dining and kitchen as the main subject of living
Oriental bed element plays both Sofa and living corner
Layered bookshelf plays both display and storage that records the memories of life
Each spatial element was originally in singular form
However, according to the attribute of space, multi layered overlay elements.
Constitute the diverse spatial function.





我們試圖用重疊的空間元素，在一個微型尺度的空間中，重組出生活的模樣。空間的入口以層的概念來表現量體的呈現，"層"是光影賦予的表情，藉由量體堆疊自然產生深淺層次的變化。

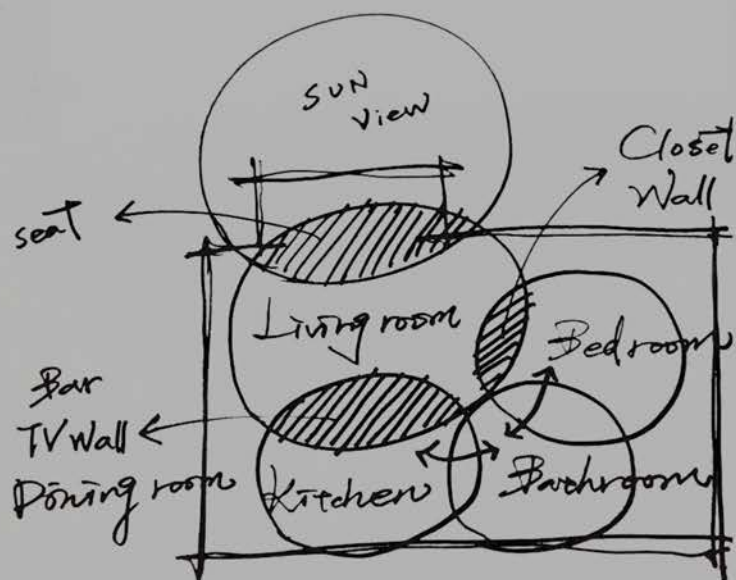
In this project, we intend to overlay spatial elements in such a mini scaled site. To re-construct appearance of living style. Space entrance is given the concept of leveling to tell the display of body weight. "Leveling" is the expression awarded by silhouette. With changes created naturally from layering of depth from body weights.





在十坪大小的空間裡，我們運用空間使用的重疊性，利用低調的色彩，堆疊的置體，試圖統一元素的基調，尋求空間的一致性，並依使用機能的不同，豐富了空間的可能性，反射的灰、黑及白色調質感，藉由不同深淺的灰階及黑白彩度，抒發空間真正的表情，以揭示生活的寧靜。

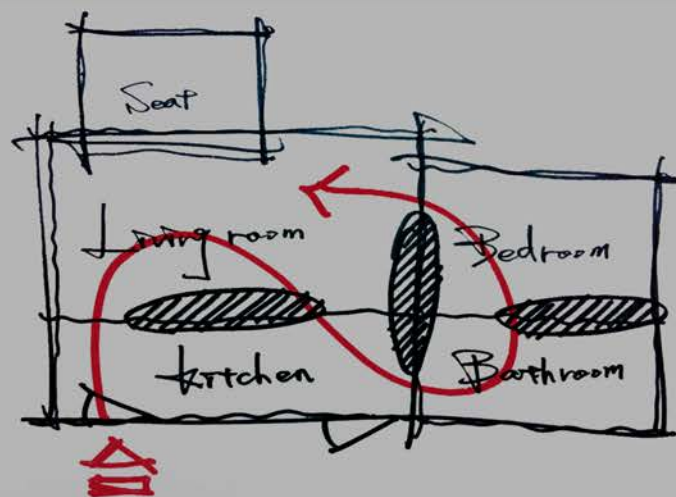
Low key colour tone, stacked subjects. We tempt to unify the keynote of element. Seeking for the consistence, living function enrich the possibility of space. For the quality of reflected gray, black, and white colors. Borrow from gray-scale and black-white coloring hues of diverse depths. Demonstrate genuine express of space in revelation of serenity of life.





廚房與餐桌及客廳面向安排於同一軸線上，隱喻出小空間配置性的多樣可能。讓高矮不同量體的排列，增加空間的多樣及層次變化。界定也模糊了不同使用的空間次序，私領域及公領域隔間採用反射較高的不鏽鋼材質，讓光線得以釋放，讓空間的顏色更加粹化。

Kitchen, dining room, and living room face on the same axis as arranged. Metaphorizing diversified possibilities of allocation for small space. So that arrangement of body weights with various altitudes. Increase with space diversity and leveling changes.





丹青隱墨隱水，其妙貴淡不數濃。利用低調的色彩，堆疊的量體，企圖讓空間終歸寧靜。漸漸地，放下瑣碎煩憂，讓妄想再次得以沉殿。

Red and green are secluded as ink superimposed waters, wonder lies upon lightness than thickness. Low-profile colors are used for standing, with accumulated body weights. Turning space finally back to serenity. Gradually, down trivial worries, let paranoia sink again to the temple.

