

**TID** 2013 Award  
Taiwan Interior Design

居住空間/單層

The TID Award of Residential space / Single Level

空間初相

Original Space

近境制作設計有限公司

DESIGN APARTMENT

主持設計師

Chief Designer

唐忠漢 T T

協同設計師

Co-designer

黃芷筠 Jihyun Huang

攝影者

Photographer

游宏祥 Kyle Yu



## 空間初相

Original Space

一種減法的生活態度

在除去的过程中找寻最初的力量  
以交错并且分配予不同机能的纯净量体  
做为主要空间界定  
将区域划分为不同的生活场景  
低化高度以减少原有空间条件裡  
既有大梁所造成的压迫感

天然温润的木質  
純粹的黑白突顯材料原始的張力  
平實而絕對  
用中性表現回歸形式上的單純與客觀以後

看見空間的初相  
也回歸生活最初的嚮往

The life attitude of subtraction,  
seeking for the initial strength in process of elimination.  
Use the intermixing and distribution to award pure body weight  
of diverse functions as its primary definition of space,  
partitioning the region into various life settings.  
Letting down height to reduce the sense of pressure created  
by the existent summer beam in the original space;  
the natural and mild wooden quality, pure blackness and whiteness have  
contrasted the primal tension of materials, modest but absolute.  
After resorting to the neutral indication in regression back to the simplicity  
and objectivity in form

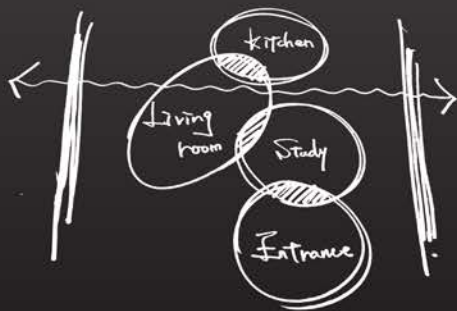
Finding the initial appearance of space,  
and retreat back to the early longing of life.





空間企圖減化設計語彙  
 在界定上分別以各種不同功能的量體做為區分  
 並以降低量體高度為特色  
 除減少壓迫感以外  
 形成視覺穿透  
 卻隔絕動線所營造出一種似透非透隱約的空間趣味

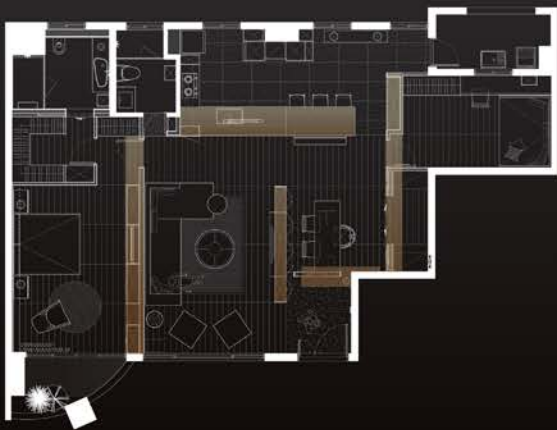
Space should attempt to reduce design glossary,  
 while weight bodies of diverse functions are used in definition for partitioning,  
 and the feature of lowering weight body is used to lessen the sense of pressure.  
 Besides, the seemingly existent and absent space fun  
 is created through vision yet insulated from route of movement.





因應基地原有單面採光的天然條件  
捨去實牆而採用交錯的塊體成為開放空間彼此過渡的重要介質  
進入房間的場域則以兩道連續牆面專注劃分  
生活模式依此展延而開

For the site is given with natural condition of original one-side lighting  
It rids of concrete wall but resorts to block-size for open space,  
so that the mutually important essence of transition enters the domain of rooms  
Two serial walls specializes in partitioning  
With life models extend open on their own

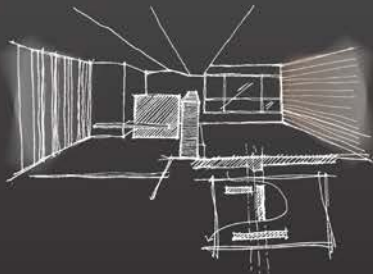




材質的選擇單純化 以表現對材料本質美感探索的態度  
垂直水平交錯處理 嘗試單一素材所能訴說的不同語言  
低色調的空間透過調和過的光線營造出的靜謐氛圍  
讓簡單 成為最大的能量

Selection of materials is made simplified,  
showing the attitude of aesthetic exploration for essence of material  
Dealing of vertical and horizontal intermixing,  
attempting to elaborate different languages one single element can divulge  
Space of low-color tone creates such serene atmosphere through blended light beams

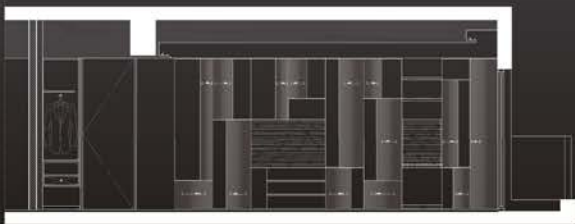




以兩道牆面做為區分公私領域的介質  
 連續的牆面將入口動線簡化於無形  
 化繁為簡  
 讓開放區域擁有放大的延展性  
 而臥室內擁有安靜而極致內蘊的氛圍

Two walls are used as the intermediaries in separation of private and public domains  
 The serial wall renders the route of movement with entrance invisible  
 Sophistication transformed into simplicity  
 So that the area of open space possesses the greatest continuation  
 But the bedroom command the most peaceful and well-contained atmosphere





看見空間的初相 回歸生活最初的嚮往

Finding the initial appearance of space, and retreat back to the early longing of life.