

TID 2013 Award
Taiwan Interior Design

居住空間/單層

The TID Award of Residential space / Single Level

映潮流

CURRENT IN CASA

新澄設計

NEW RXID

主持設計師

Chief Designer

黃重蔚 JOHNSON HUANG

協同設計師

Co-designer

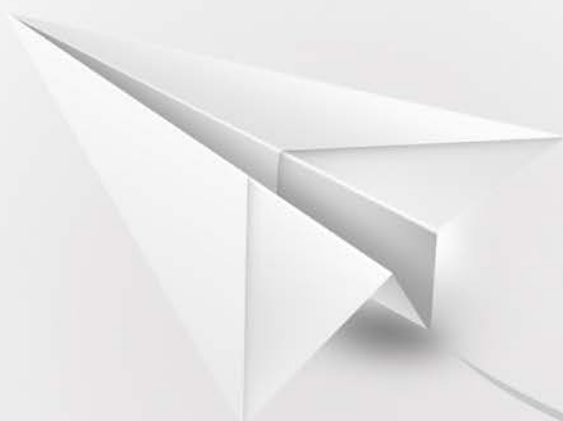
陳威男 Zapper chen

洪慶昇

攝影者

Photographer

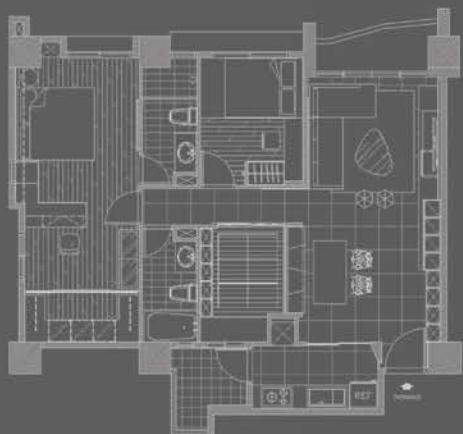
吳啟民 KEVIN WU



映・潮流

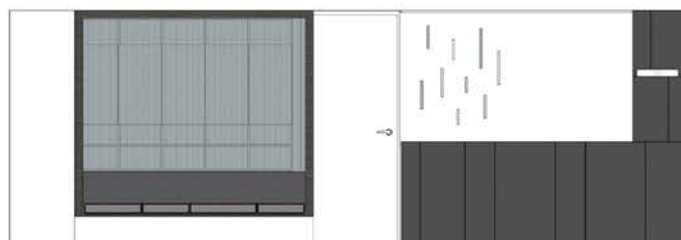
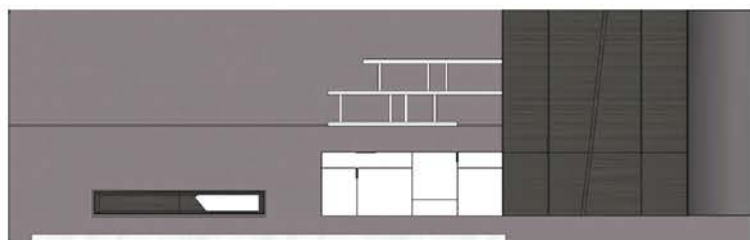
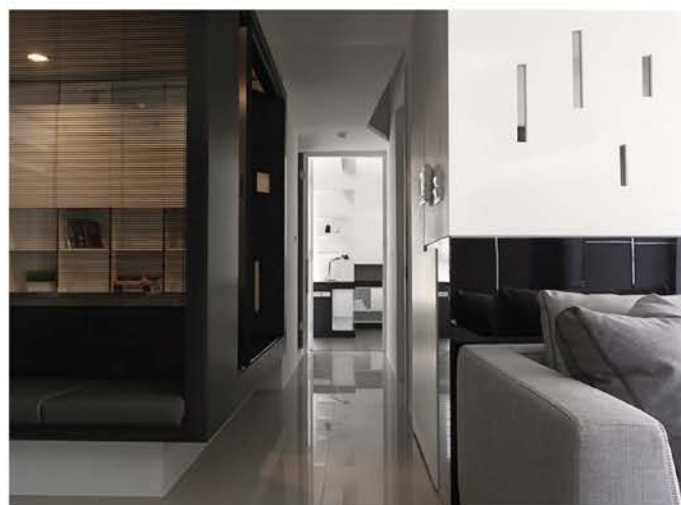
此案設計師透過弧線與直角的造型揉和，強烈對比色的家飾選用，加上中間色的裱材做調和，利用不同的幾何造型，適量天花板及立面的不規則摺線，各種玻璃材質製造不同的視覺穿透感。

In this case, besides home furnishings with strong color contrast, cloth with intermediate color and many kinds of glass, the designer also uses different geometric figure and combination of curves and angles to make wonderful vision.



colors

黑白對比搭配中間色和低彩度作為色彩調合色





Wing

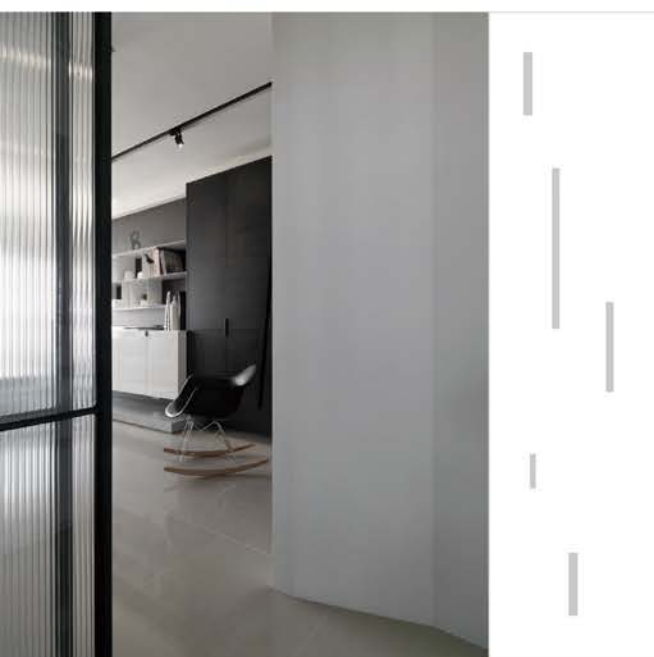
從餐廳延伸到客廳的機翼造型天花板，除了串連兩個空間的效果外，同時兼顧了間接、投射、餐廳主燈的照明功能。

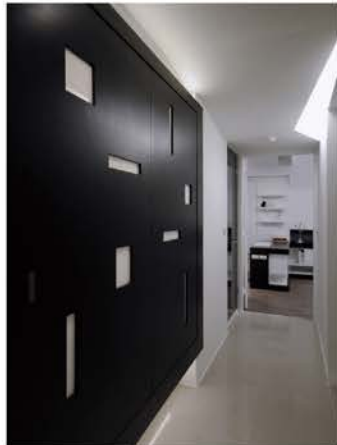
The ceiling shaped as a wing, stretches from the dining room to the living room. This combines two spaces, and also considers of the illumination of indirect, focusing, and the master light of the dining room.



the sense of Through

餐廳跟書房僅用一片玻璃做區隔保留視覺穿透感，口字型框架搭配皮革坐墊，節省了餐椅原有距離，讓玄關廊道空間更開闊。





Light Box

書房植入光盒的概念，折門嵌入不同造型的矩形透光玻璃，讓書房與廊道之間產生不同的光影變化。

The study room with the concept of Light Box, the fold-door is embedded different shapes transparent glass. This makes changeable light and shadow between the study room and hallway.



Master room

此案另一個特色是打通兩道隔間的主臥室，原本沒有更衣室的空間變的更開闊，同時兩個空間的光線匯合自然就明亮許多。寢室跟更衣室之間僅利用化妝檯結合造型矮櫃區隔，增加視線穿透感，空間也得變簡潔了，主臥浴室利用不銹鋼及玻璃材質做為隔間，利用透光性引入室內光線，如此流暢的舒適生活便藏在這些變動的細節中，使原本看似平淡的空間無處不精采。

The other characteristics of the case is to break through the master room with two partitions. This makes the space more spacious and brightening.

With these changeable details, life becomes more comfortable and wonderful.