

TID 2013 Award
Taiwan Interior Design

居住空間/單層

The TID Award of Residential space / Single Level

長型空間-微距漸層

Gradient Space

沈志忠聯合設計有限公司/建構線設計有限公司

X-Line Design Co., Ltd.

主持設計師

Chief Designer

沈志忠 CHIH CHUNG SHEN

協同設計師

Co-designer

李晨妤 Chen-YuLee

攝影者

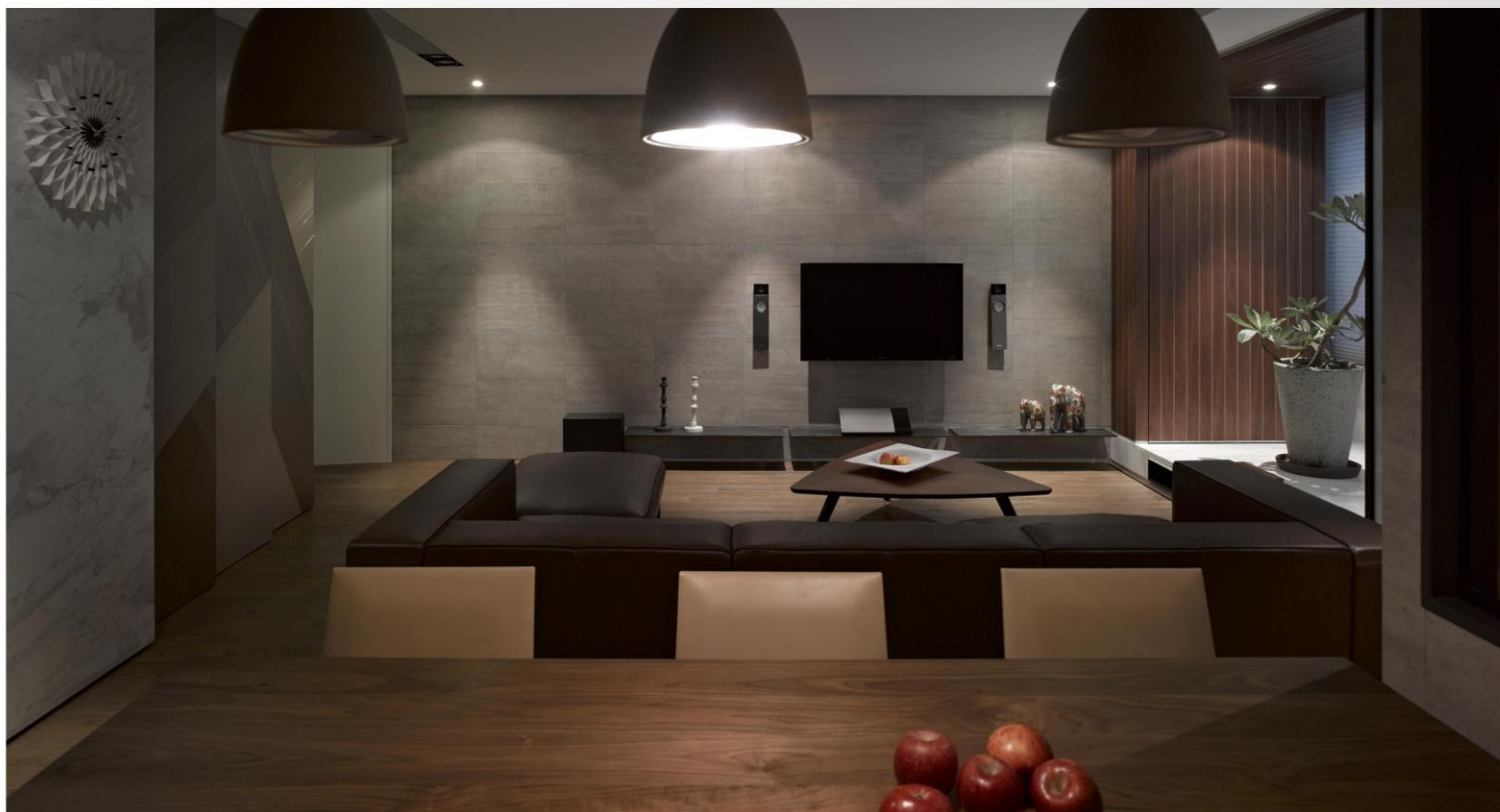
Photographer

李國民 Kuo Min Lee

長型空間-

微距漸層

When we first entered the project site, we had the impression of having one side as a narrow back alley, and another side as a noisy main street. The site is a long and narrow building with crowded and insufficient of light. According to our experience, the long shaped space is usually divided into different areas by concrete walls that result in an corridor in the long shaped space. However, we take the environment itself into consideration and try to use the distance between buildings to create privacy, also to block the noise effectively from the street but at the same time maintain the convection of air and adequate of sunlight.



初入案件基地時，印象中一邊是狹窄的後巷，一邊是車聲嘈雜的大馬路，基地屬採光對流壅滯的狹長形物件，相較於以往的處理手法，長型空間往往是被一道道磚牆劃分出使用機能，導致長型空間的廊道動線，顯得更狹長。

但我們思考的層面是從基地本身環境出發，如何讓緊鄰的棟距關係，得到隱私的舒緩？如何有效隔絕擾攘的車聲，同時保有對流的空氣與穿透的光線？

PLAN



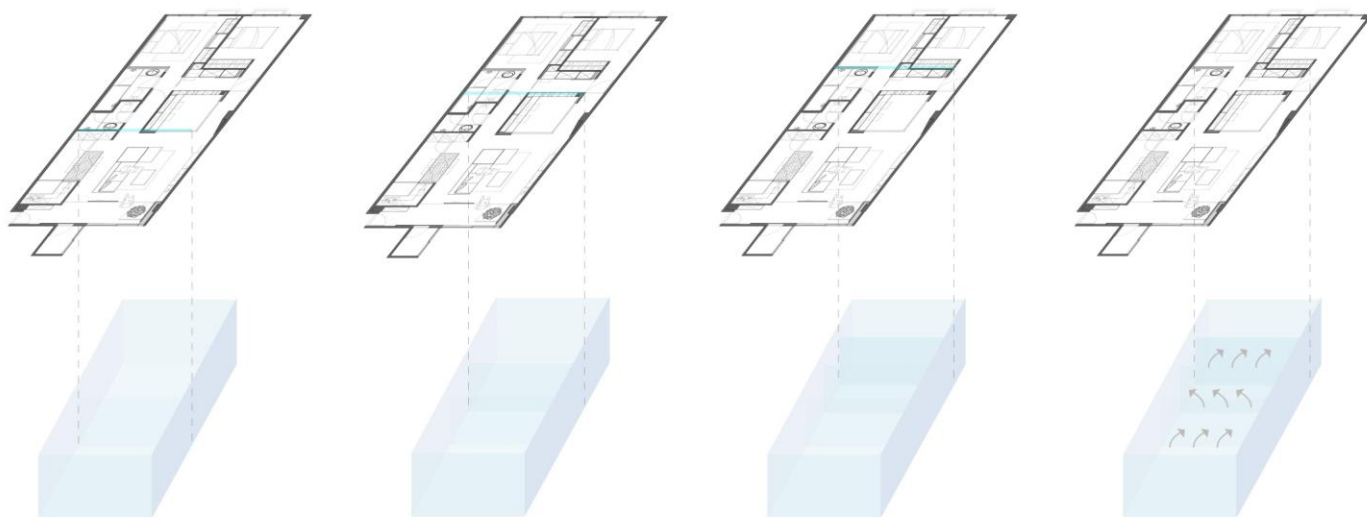
- | | |
|------------------|-------------|
| 01 VESTIBULE | 06 BEDROOM |
| 02 KUVUNG ROOM | 07 BATHROOM |
| 03 STUDY ROOM | 08 BATHROOM |
| 04 DRESSING ROOM | 09 KITCHEN |
| 05 CHILD ROOM | 10 BALCONY |

In this case, we take the long shaped space as an open box. While we design the compatibility of each function and space, we consider its transparency. Starting from the living room, consider it as a full-transparent space to a semi-transparent study room that designed with linear bookshelves adjacent to the dressing room. The flexibility of curtain blurs the definition of partition between public and private space and also achieve the gradual transparency of partition.

因此我們將長型空間視為一個開放的盒子，在浮現各個量體屬性的位置時，同時思考其使用透度。由客廳純粹的透明量體，過渡到書房半穿透的量體，書房中線性所組成的書櫃，緊鄰更衣間，在公共與私密之間，加上窗簾的彈性使用模式，虛化了隔間的定義，同時達到漸進式的穿透隔間效果。



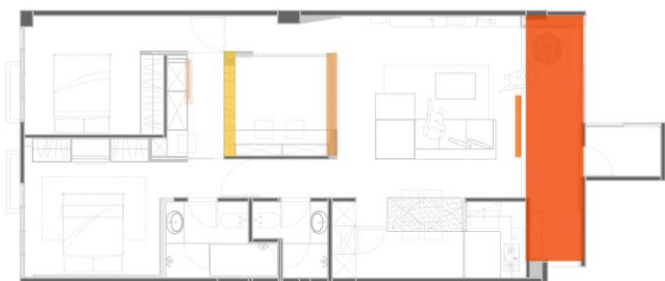
ANALYSIS



By using the gradual transparent design method, the light will be led layer by layer and bring in the air flow. After implementing the complete functions into the whole space, then it comes to the privacy issue. We obtain the privacy balance with adjacent building by applying semipermeable gripper glass and the solid in this tightly distance wood grilles.

藉著漸層式的穿透量體，一層一層的引導光線穿透，並帶入空氣的對流。在機能完整的置入後，進而思考隱私的微距關係，透過夾紗玻璃的半透性遮蔽、及隔柵的視角穿透，在緊鄰的棟距間，找到平衡點。





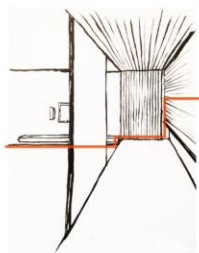
← 空氣的對流
→ 光線的導引

環境/建築

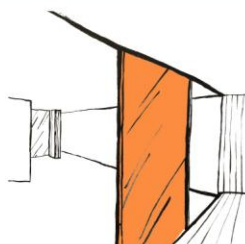
建築/人

建築/光線

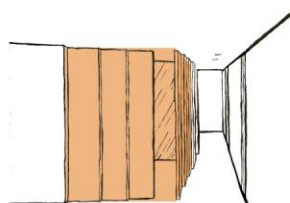
室內/穿透



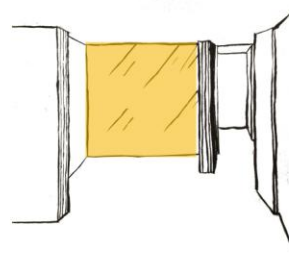
玄關利用升高的台度，和緩與鄰棟建築緊密的關係



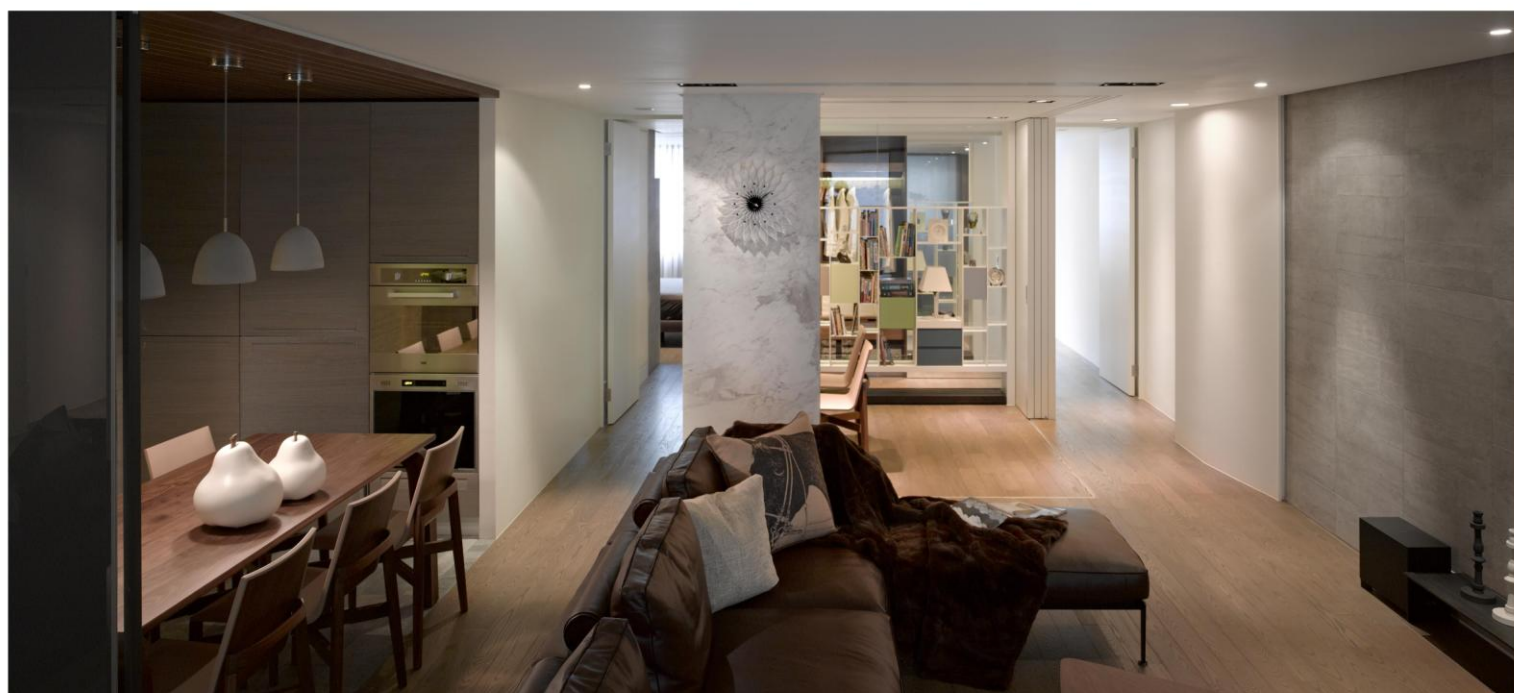
半透明隔間隔絕隱私，界定出公與私，內與外關係



書房作為彈性使用的空間，藉此開放隔間導入光線



以穿透的方式，延伸光線，讓界線裁定空間的定義





於是...業主重新主導空間的使用權，在穿透架構的空間場域，他們支配著穿透、半透的微形量體，依據使用的機能調整，讓長型空間更具層次及漸進式的美感。

Therefore the owner can reconsider the usage of the space. In its penetrating structure of space, it provides the penetrating and semipermeable diminutive massing. By adjusting the usage function, it provides a more hierarchical and progressive aesthetic for the long-shaped space.



