

TID 2013 Award
Taiwan Interior Design

居住空間/複層

The TID Award of Residential space / Multi Level

Residence of Tzeng

沈志忠聯合設計有限公司 | 建構線設計有限公司

X-Line Design Co., Ltd.

主持設計師
Chief Designer

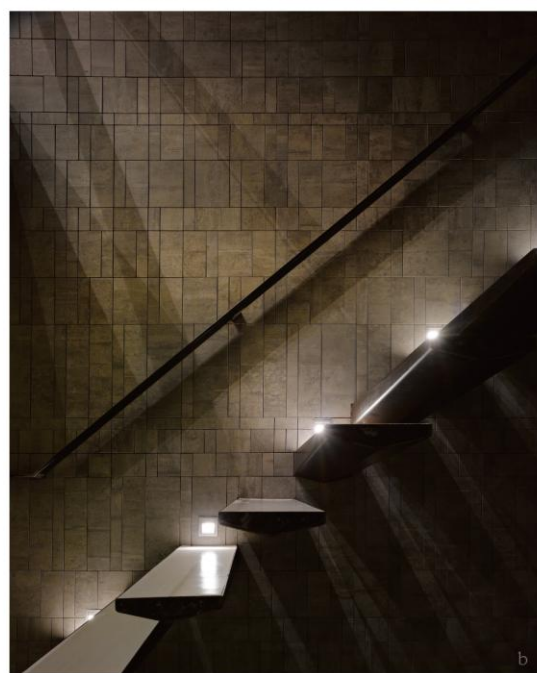
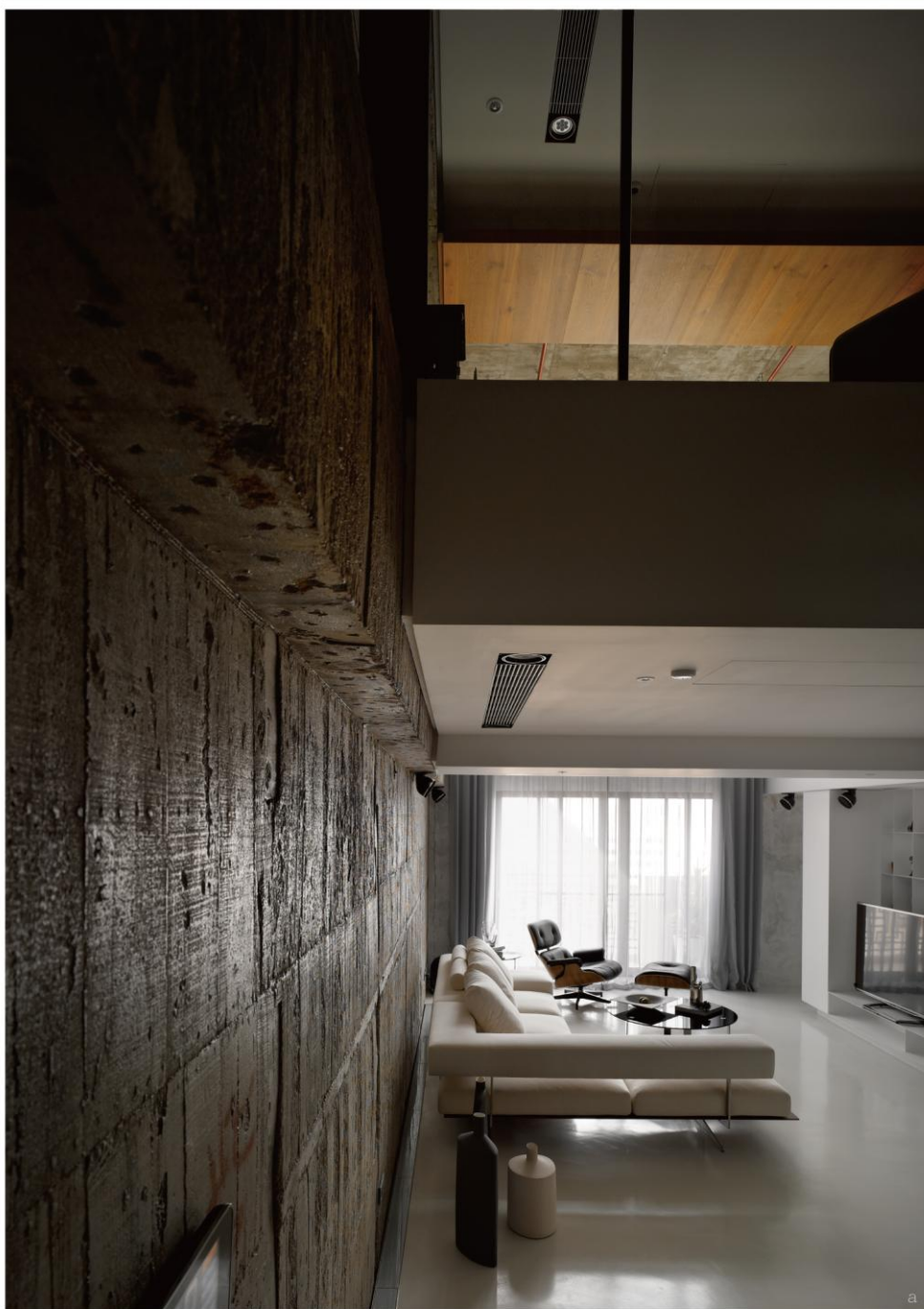
沈志忠 CHIH CHUNG SHEN

攝影者
Photographer

李國民 Kuo Min Lee

A. Living room

B. Stairs



有一種美是不經意的、被忽略的、他歷經歲月的刻畫，
陽光的炙熱、雨滴的敲打、在物換星移下，被大自然創作著，
完成了一幅具美感的原生態畫作，簡單，卻被忽略著。

There's a sense of beauty was unrefined and often ignored
that experienced the imprint of age, heat of sunlight and
the dripping of rain. As time goes by, a primary aesthetic
scenery was unrevealed and created by the carving of nature,
simple, yet ignored.

若以同樣的角度來看待我們的場域，原建築板模的紋理，在手感的制作下，不造作的呈現；工人在牆上的紀錄，被遺留成歷史的記號，在四季更迭的光影變換下，展現豐富的層次。細細品味材質最原始的特性，可發現其中真摯的美學，被展露無疑。

By applying the same perspective to this space site, the texture of architecture concrete slate was represented directly by showing the original craftsmanship. The construction marks on the wall were preserved and then became a trace of history that brings out rich layers of light gradients by the variation of seasons.



R esidence of Tzeng

A. Living room

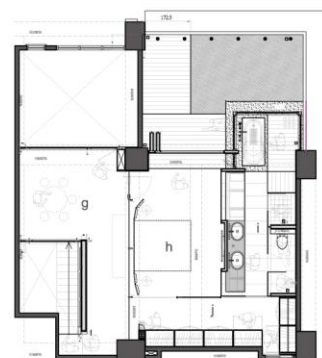
1F PLAN



a. Living room
b. reading Area
c. Restaurant
d. kitchen
e. guessroom

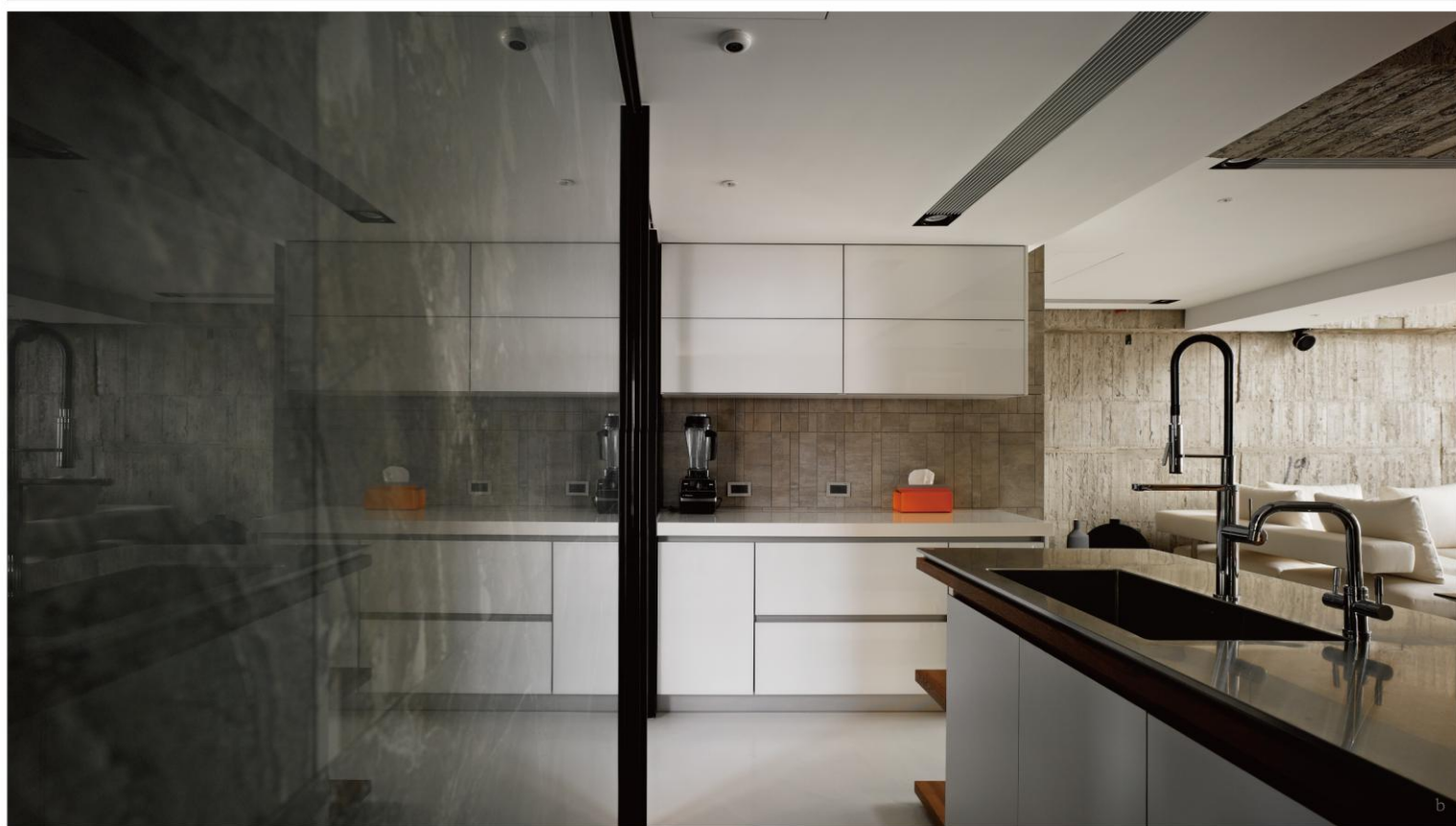
f. Bathroom
g. Living room
h. Bedroom
i. Bathroom
j. Locker room

2F PLAN



A. Reading Area

B. Kitchen



A. Bedroom

B. Terrace



由戶外過渡到室內的場域，運用最少的隔間，保持空氣對流，讓空間的寬敞性與大自然呼應；進入室內空間，我們卸除框架，依附於自然的基底，穿織出生活的動線，找出人與自然間，更貼切、自在的生活方式，回歸到最簡單、純粹的美。

From the exterior to the interior space, we applied the minimum of walls to maintain the circulation of air and try to maximize space capacious that corresponded to the exterior. As for our approach to the interior space planning, instead of applying the stereotype of being framed by the walls, we chose to follow the original site frame and forming a traffic flow that showcasing a life style that brings human being and nature even closer. Therefore, our design goal in this case was achieved by returning to the simplest and purest beauty.

A.2f Living room

B. Bathroom



A.1f Corridor

B.2f Corridor

