

TID 2013 Award
Taiwan Interior Design

居住空間/複層

The TID Award of Residential space / Multi Level

共築

Chorus

甘納空間設計工作室

Ganna design

主持設計師

Chief Designer

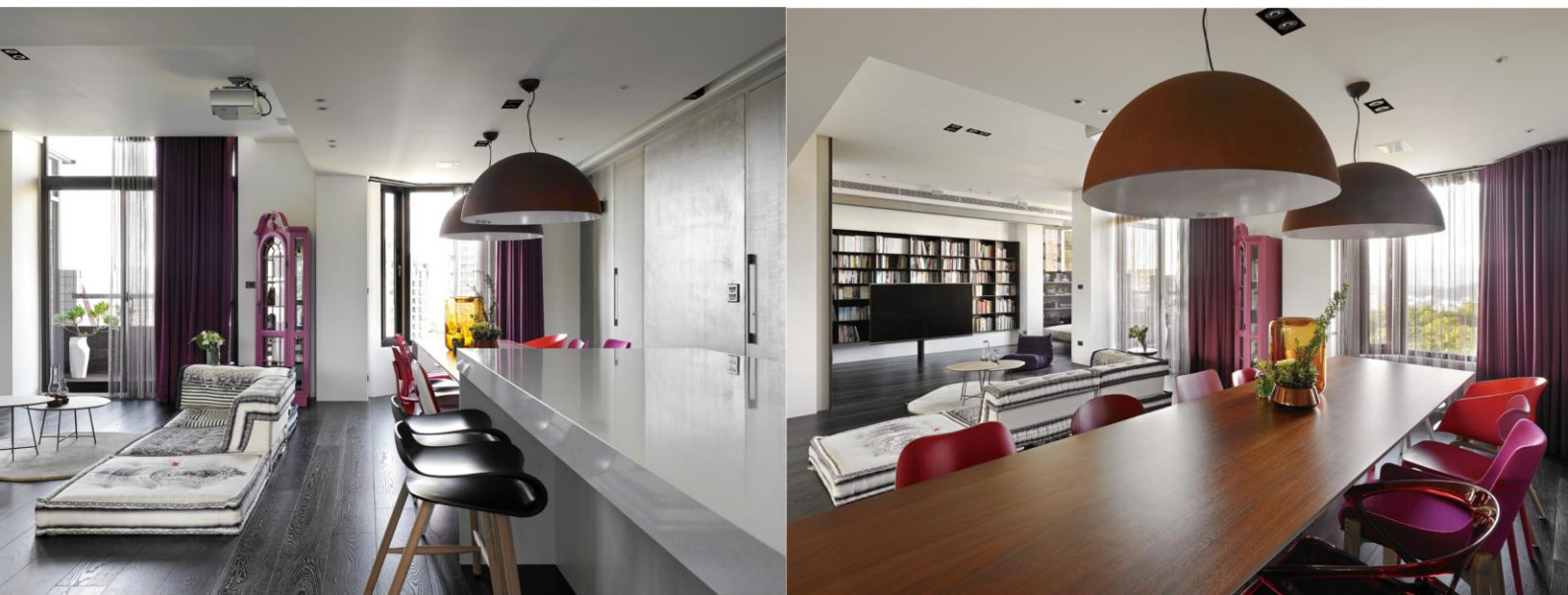
林仕杰 Shih-jie Lin

陳婷亮 Ting-Liang Chen

攝影者

Photographer

岑修賢 SAM SIEW SHIEN



既有下層空間為主要入口與公共場域，保留室內的開放視野增添家人互動的生活時光，同時設想使用者與對外窗景的延伸關係。

The first layer is the common area. The designers try to broaden the view that the residents can enjoy, increase the interaction opportunity between the residents by integrating the scattered corners, and make best use of the beautiful window view outside.



共

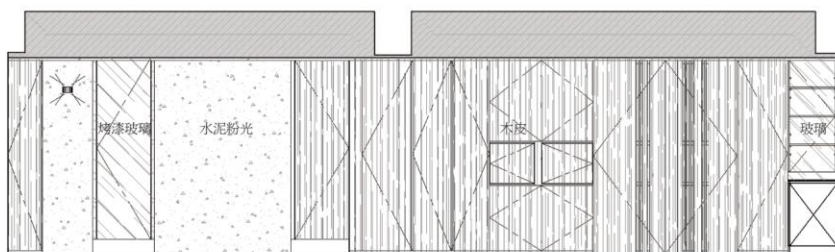
築

Chorus

開放式廚房結合餐桌成一字型狀，所相襯的餐廳主牆運用水泥粉光整合木皮和烤漆玻璃，營造不同色感層次變化，其寬窄不一的立面分割讓右側放置冰箱的通風處有了線性切口的設計表現。

The open kitchen is combined with the long dining table. Considered the pillar, we try to spilt the façade into several sizes, and adopt cement finished, veneer, and painted glass three materials. The cement finished wall is the ground color of this house. Besides, we use uneven dyed veneer in order to create colorful main wall with various texture and colors.



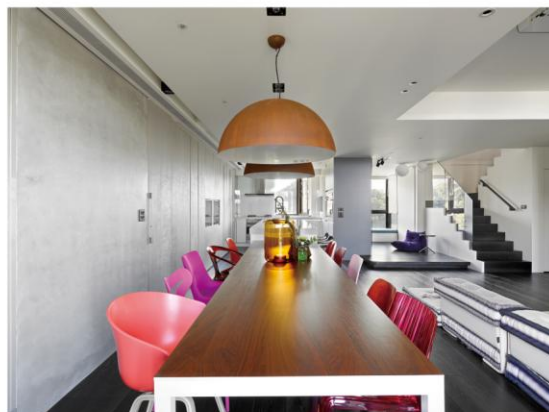


共
築
Chorus

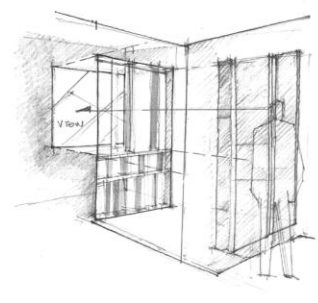
透過使用者的生活流動，恰如空間注入靈魂般的柔情浪漫。

Moving of people infuses the soul in this picturesque space





共 築 Chorus



黑色木地板與白色天花板之間，運用鐵灰色修飾既有柱面，配搭灰玻璃門片讓窗景綠意延伸於室內，一旁通往上層的梯間中，彙集彩色玻璃的透光變化，營造心靈觀想之地。

Between black and white ceiling wood floor, iron gray is used to modify the cylinder. The gray glass doors allow the green mountain view of enter to the indoors. Next to the indoor playground, the staircase collect the beautiful colors reflected through translucent glasses, creating a pure corner for thinking.

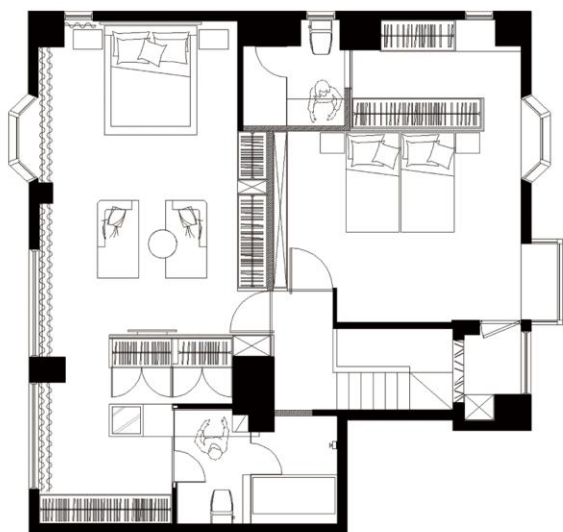
共
築

Chorus

梯間一道彩色玻璃與
光影的自然疊合，凝
視窗景成發人深省的
角落，牽繫每一時光
情感。

Looking at the
high-ceilinged
white staircases
, you can see
the colors changes
in different
angles.
The beautiful
combination
of light and
colorful glass
completely realize
the change of time.





共築

Chorus

利用白色來掩飾既有的零碎區塊，以重至輕的整體配色，從下層的黑色木地板開始，到上層的白色木地板，於黑灰白之間置入粉紅色調的傢俱物件；而上層的兩間臥室分別依照使用者設定不同色系主題。

White is a color that can cover up some fragmented blocks, so we use white to be the main color on the wall. Then we choose black to be the color of floorings. From top to the bottom, the color is from light to dark. Besides, pink furniture dots the space and vitalizes the house. On the second floor, each bedroom has theme settings of color configuration.

