

TID 2015 Award
Taiwan Interior Design

商業空間

The TID Award of Commercial space

SILVER ROOM

設計集人

Design Systems Ltd

主持設計師

Chief Designer

林偉明 LAM, Wai Ming

協同設計師

Co-designer

王永健 WONG, Wing Kin Kent

朱慧豐 CHU, Wai Fung Phoebe

張星 ZHANG, Xing

鍾建龍 CHUNG, Kin Lung Kurt

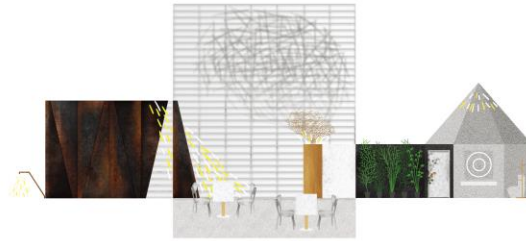
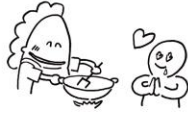
方歡歡 FANG, Huanhuan

攝影者

Photographer

設計集人 Design Systems Ltd

Matteo Carcelli



SILVER ROOM

餐廳設計 | 香港

創造自己的味道

相信每個人都不能否認，世上最獨特的味道是媽媽煮出來的味道。就算是最普通不過的食材，只要經過她獨特的烹調方法和配方，都能煮出讓你難以忘懷的味道。這是一種能觸動你感情的味道，是一種我們自己獨有的「家」的味道，是一種分辨「你家」和「我家」的味道。

作為一個設計師，以「媽媽的味道」作起點，我們嘗試用最普通的物料為這家餐廳創造出自己獨有的風格，配方是我們日常必定接觸到的塑料、鐵和木，而烹調方法是光和影。

塑料一般不常用作建材，但在日常生活裡隨處可見。我們採用一種可以循環再用的阻熱塑料製作牆身和天花，而為了增加項目的環保元素，我們用的是二次使用塑料。所謂二次使用，是塑料在第一次注塑成形之後剩下的塑料，基本上是剩餘沒用的物料。由於是再用的原因，它的雜質會比較多而透明度會變得比較低，因此我們選擇了為它作磨砂表面處理，令它變成半透明。而且半透明的塑料有一種特性，就是前面和後面不同方向的光源會令它為生不同的視覺效果。這正是我們想要的東西，因為這個項目位於一條人行道上，每天不免會有一段時間室內牆身表面會受到日光照射。到了晚上，燈光就會從牆身和天花背後透出，把整個空間微微點亮。我們正是要運用這兩種不同的光源為這餐廳創造出兩個截然不同的氣氛，來配合其中午和晚上不同的餐牌。你或者會說，玻璃也可做到這效果，不一定要用注塑塑料。但是若使用玻璃飾面，整體重量和支為結構就不能像現在那麼輕巧，成本和施工難度也會大大增加。

鐵也是主要的材料之一，它和塑料是兩種平常不太會走在一起的物料配搭，而我們把這兩者結合在一起的方法，就是透過光和影。鐵樹安裝在實心柚木的底座上，像懸浮在半空；柚木底座本身是服務台。鐵樹本身不規則的線條在這空間內為格子牆身和天花的直線幾何增添節奏，是整個空間的味道重點，尤其在晚上，鐵樹的影子被投射於牆身和天花，營造出一種舞台效果。在日間，塑料牆身和天花予人輕巧的感覺，像個簡約的半透明盒子；你甚至可以透過塑料隱約看見背後的結構和機電設施。在夜間，鐵樹縱橫的影子成為整個空間的主題，塑料牆身和天花變成中性的背景。同一個物料組合就這樣透過不同的燈光為這空間「烹調」出兩種不一樣的味道。

Creating One's Own Taste

Mom's cooking undeniably taste the most unique to us. Even for the same dish, with the same ingredients, each family has their own recipes and cooking methods. With her special techniques, mom can make dishes that are unforgettable, touching, and representative of her home style. Doing design nowadays is similar to doing shopping in a mega-size supermarket, with materials from all over the world, and designers have to choose from the same pool of materials. So, in order to create a distinctive character for this restaurant, we have to apply special techniques like mom. Our ingredients are plastic, steel and wood. And we cook with light and shadow.

Plastic, though not often used as building material, is one of the most common materials we see and touch everyday. In this restaurant, the wall and ceiling panels are made of flame-retardant recyclable plastic. We have chosen a more environmentally-friendly regrid type, which however has more impurities and lower transparency. For this, we make it semi-transparent by frosting. The plastic panels give different feels when front-lit and back-lit. Since the restaurant is on street level, there are certain hours during the day when sunlight shines into the interior. With natural light in daytime and illumination in the evening, two different atmospheres can be created to suit the menus for lunch and dinner. Injection moulded plastic is more suitable than glass in this case, for it can lead to similar effect, but with reduced weight (of the modules and the supporting structure), lower costs and easier construction.

The unusual combination of steel and plastic is done with light and shadow. The steel trees are installed up on the solid teak wood service counter cabinets as if floating. Their irregular structure adds rhythm to the neat geometry of the interior. During daytime, the restaurant looks airy like a minimal translucent box. You can even see the shades of the structures and E&M facilities behind the plastic panels. In the night, the criss-cross shadows bring theatrical effect to the space. It becomes the motif of the interior, with the plastic wall and ceiling acting as a neutral background. With different lighting, we create two different "flavours" for the same material combination.





