

TID 2015 Award
Taiwan Interior Design

居住空間/複層

The TID Award of Residential space / Multi Level

歸廬

GUI LU

廈門徐福民室內設計有限公司

FM.X INTERIOR DESIGN CO.,LTD

主持設計師

Chief Designer

徐福民

攝影者

Photographer

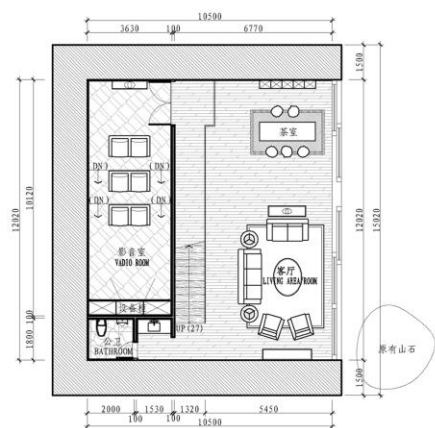
吳永長



閑居少鄰並，草徑入荒園。

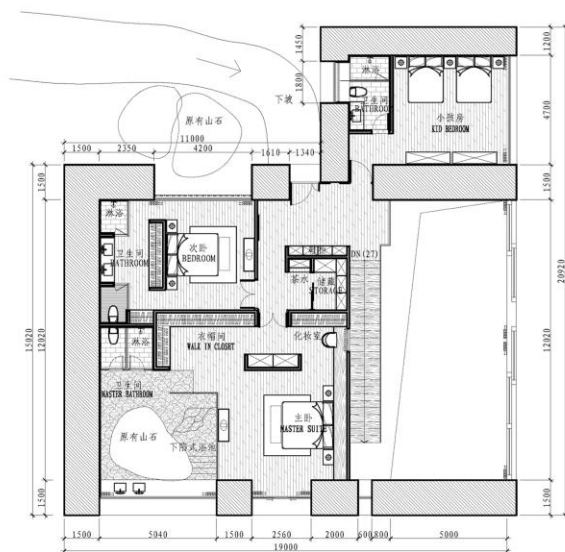
归序

平面布置圖



一层平面图

SCALE 1:100



二层平面图

SCALE 1:100



归序

設計的本質是弱設計，忘記了設計，甚至歸於虛空。當設計形式語言隱退，人性的內在對宇宙人生的情懷便顯現了。作為靈性的人，開始觀照超越物質之外，直接潛入擊中人的內心。那是壹種簡單卑微自然質樸純粹的生活。所以最大限度保留與應用自然山石樹木，使偶然與必然渾然壹體。高僧大德曰：「住山成佛果，住都市成地獄。」寄情山石，物我兩忘，眾生皆佛！





《GUI LU》 ---Back to nature

The key point of design is designless - let's forget about design or even reach the other side of void. When the design language and it's format retreat, the inner humanity and its reflection on the universe and life will be revealed. The man's spirit starts to observe beyond the material, and strikes directly the heart of the audience. It is a simple, humble, nature and pure lifestyle, therefore, the designer maximizes the retention and use of natural rocks and trees, merging occasionally and inevitability together. The monk said, 'living in mountain helps reach the Buddhahood, while living in cities helps create the hell.' Give oneself to the nature, and forget about the boundary between subjectiveness and objectiveness - every being can be the Buddha!



归序

