

**TID** 2015 Award  
Taiwan Interior Design

居住空間/複層

The TID Award of Residential space / Multi Level

源自原本

Essence

源原設計有限公司

YYDG.Co.Ltd.

主持設計師

Chief Designer

謝佩娟 Peny Hsieh

協同設計師

Co-designer

蔡智勇 Calvin Tsai

攝影者

Photographer

岑修賢 Sam



ESSENCE  
源自原本





## Essence | 源自原本



透過物質的「形」與「意」不斷提出「何謂完美？」的省思。

本案以「原質」作為思考起點，擴展至全案設計。

據此藉物喻人，表達居住者懷抱本真，鍾愛自然之理想，進而反思過往我們對於完美的定義。

強調純粹、直觀的自然之美，擺脫對完美無瑕的執念，主張去除精美加工，凝視物料真摯之美。

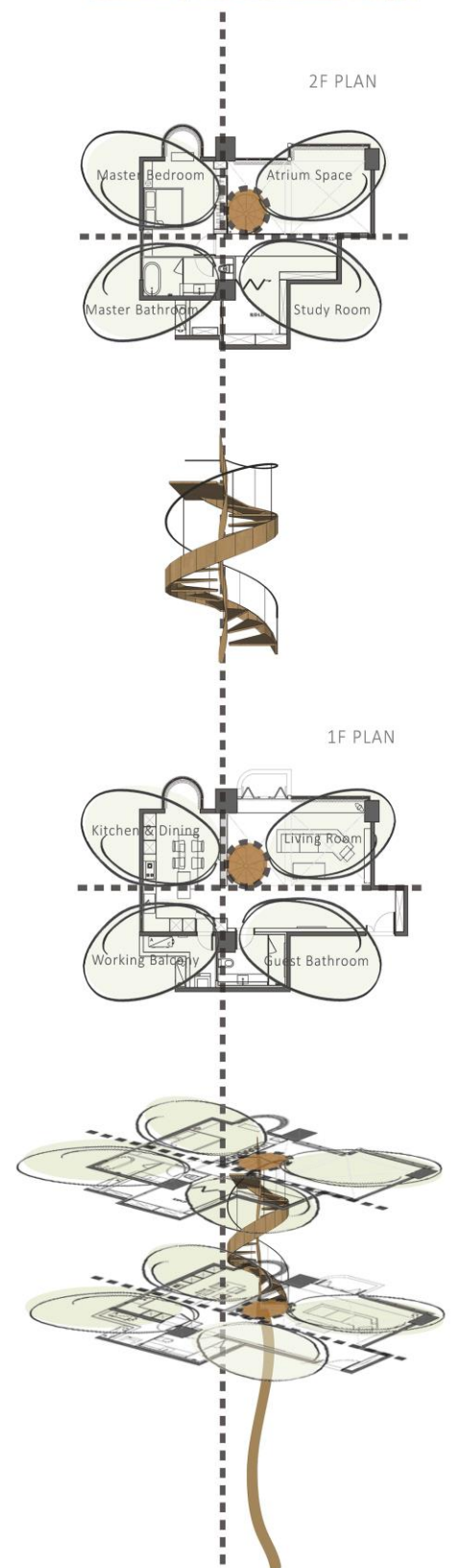
We use the idea of "origin" as our starting point and expand it to the entire design of the case. The metaphor is used to imply people's dream of embracing their innate and nature and further retrospect our previous definition of perfect.



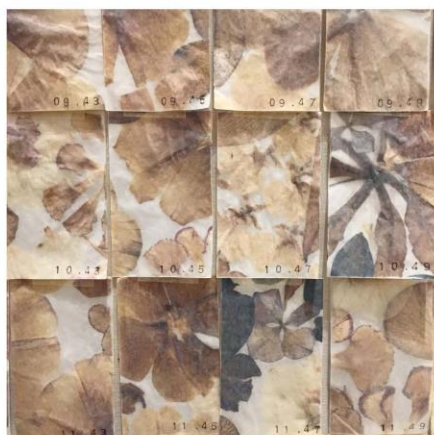


藉由「花瓣」的概念區分空間的格局與動線，連氣延伸視野的開闊層次  
「梗」的引導轉化為螺旋梯，以弧線連結兩座樓層，為空間帶入一抹舞動姿態，  
仿若為空間置入一座巨型雕塑品，畫龍點睛，以柔曲弧線向上翻揚，為室內置入活潑氣息，  
隨著居住者行走其間的身影動態，一再創造新畫面。

The concept of "petal" divides the pattern and flow of the space, which could extend the layers of broad vision. The guidance of the "stem" is converted to the corkscrew stairs, connecting the two floors with the arc line and bringing a waving attitude into the space, which seems as if it is a huge sculpture displayed in the space. It points out the keynote, flies upward with a curved arc, and makes the room lively. The new scene is continually created with the figure of the resident walking in the space.







客廳巨幅拼貼抽象畫，屬於空間中的互動性裝置藝術作品，內容以時間作為度量，各種花片意喻著分秒單位，平日傾心於薈花弄草的屋主，能撕下意義時刻加以紀念，或是將之贈予特別之人，深刻人與空間的互動關係。

In the living room, a extremely large abstract collage painting is placed as an interactive installation artwork. Time is used as the measure; each kind of petal implicates the unit of minute and second. The house owner who loves to cultivate flowers on a daily basis could tear off the meaningful moment as a memory or give it to a person who is very special, deepening the interaction with human and the space.





為強調純粹、直觀的自然之美，擺脫對無瑕的執念，自然物質在時光中不可預測的變化正是屋主傾心原由，因此全案物料盡可能取之自然的原樸物料，讓人隨著位移或環境光影欣賞時，能感受肌理變化。

To emphasize the pure and intuitive beauty of nature and get rid of the immaculate obsession, natural substance' s unpredictable change in time is the exact reason that attracts house owners; therefore, all materials in the case must use raw natural materials as possible as we can, making people feel about texture' s changes in different locations or at the moment of enjoying the light and shadow in space.







|

空間本質關乎於人，在加、減的構思中，設計的出發點源自原本，單一而純粹。在材料的選擇與細節的設計，透過粗曠的質感，表達一種平凡生活家的態度。使空間成為居住者與自然為伍的理想寄託。

The essence of the space is about human. In the concept of addition and subtraction, the design outset comes from the origin, which is simple and pure. The material choosing and the design details which emphasize on the rugged texture show an attitude of the ordinary life. It makes the space become an ideal medium for residents to associate with the nature.