

TID 2015 Award
Taiwan Interior Design

居住空間/單層

The TID Award of Residential space / Single Level

盒子遊戲/方圓之間

Game of Boxes/ Between square and circle

瑋奕國際設計工程有限公司

WEI YI INTERNATIONAL DESIGN ASSOCIATES

主持設計師

Chief Designer

方信原 Ferran Fang

協同設計師

Co-designer

洪于茹 Teresa Hong

楊誼鈴 Mandy Yang

攝影者

Photographer

嘿!起司 Hey!Cheese

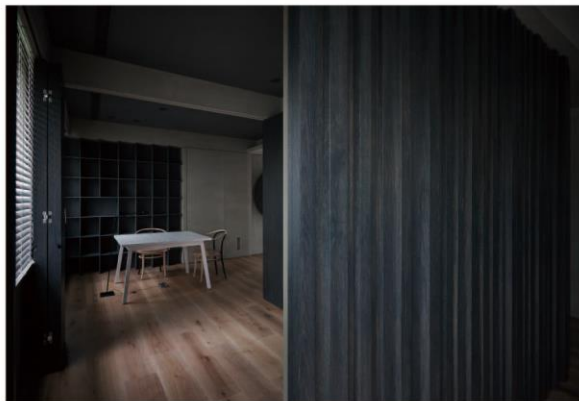
A minimalist interior space, possibly a hallway or a room, with a large black circle mounted on a white wall. The floor is made of light-colored wood. The walls are white, and the ceiling is dark. The lighting is soft and even.

Game of Boxes/
Between square and circle

盒子遊戲/方圓之間

度 / 標尺，亦是態度。

Gauging / Measurement as an Attitude



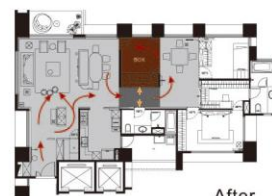
設計概念 | Design Concept

加法和減法的概念，做為空間規劃的依據。打破建物規劃長期來的窠臼，將缺點轉化成空間的優勢及特色，增加場域靈活的運用度。多樣化材質交疊，呈現出淡淡華麗、高雅氣息，透露東方文化中特有的“持”及“內斂”。

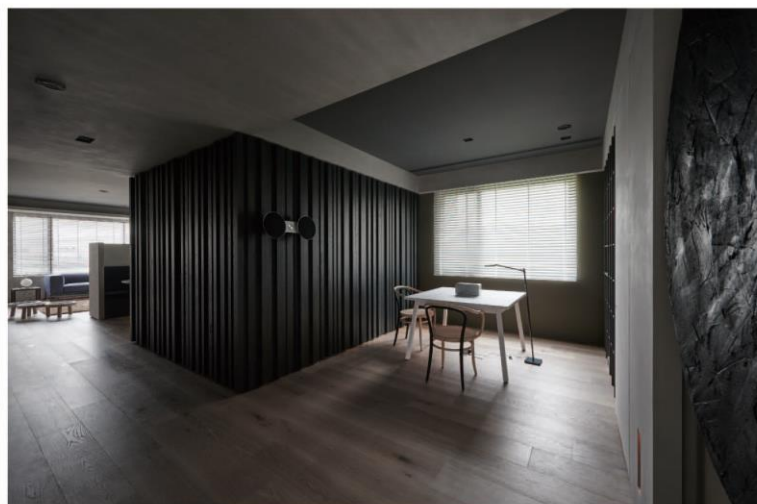
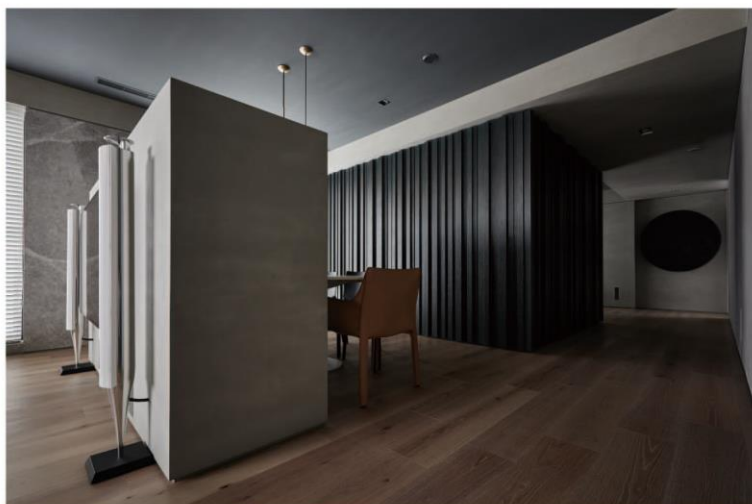
The concept of addition and subtraction is used as the basis for spatial planning, breaking the long-term stereotypes of building interior layouts in order to transform disadvantages into advantages and desired characteristics, as well as to increase flexibility in the spatial application. A “box” is not only an element, but also a space, an independent enclosed space that forms the elements connecting different spaces.

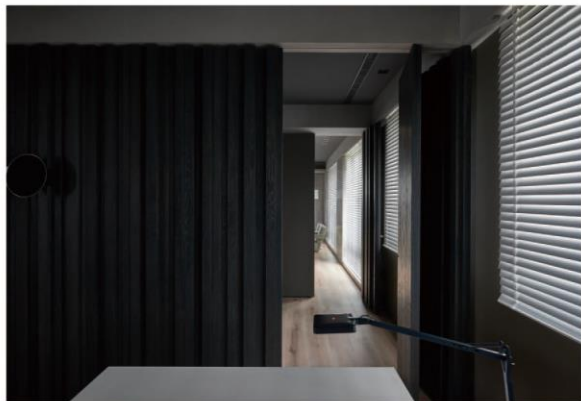
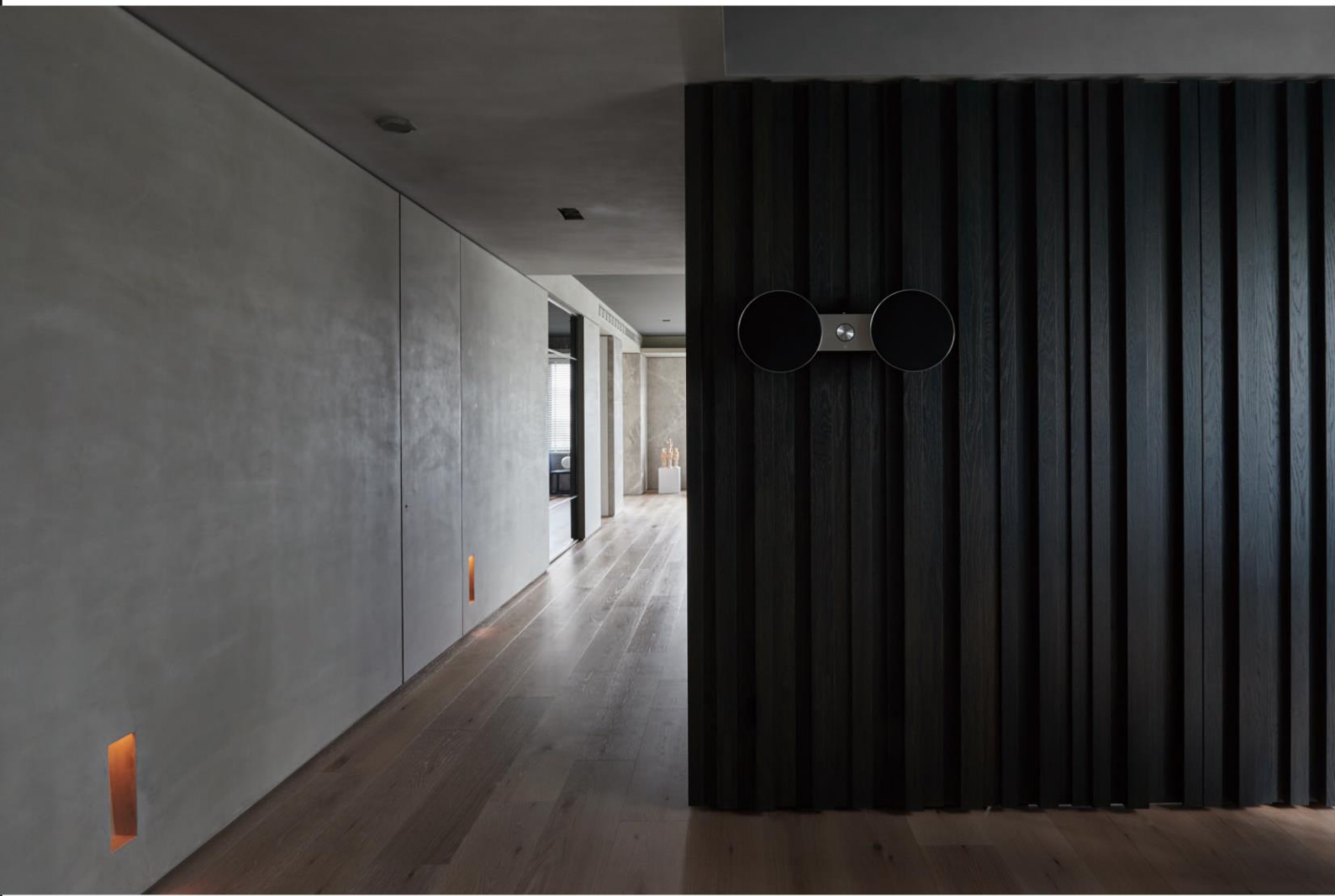


Before



After

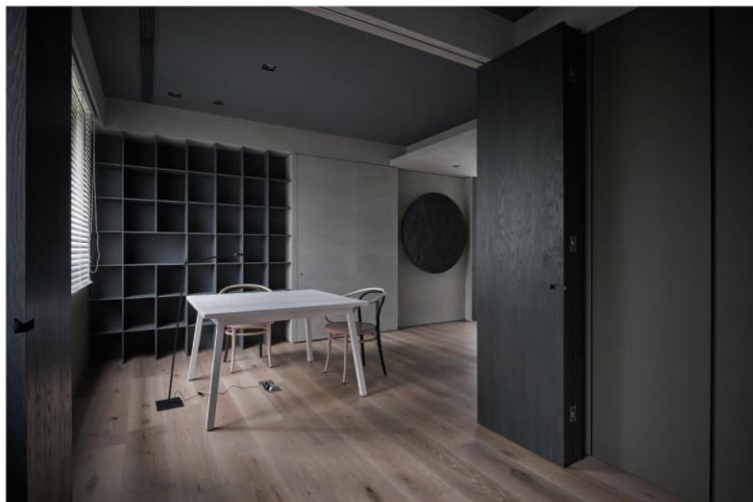
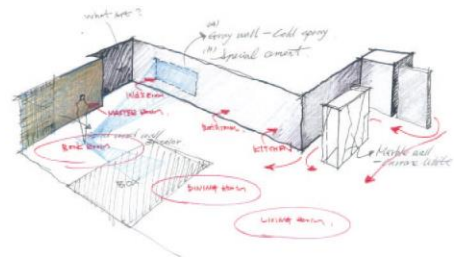




方 | Square

定性定量之間，透過方形幾何聯繫、滲透、互補有形與無形間的機能總和，創造更深的使用趣味及生活意趣。

A deeper sense of user experience and charms of life can be created between qualification and quantification through geometric connection, infiltration and complementation of squares, as well as the summation of tangible and intangible functions.

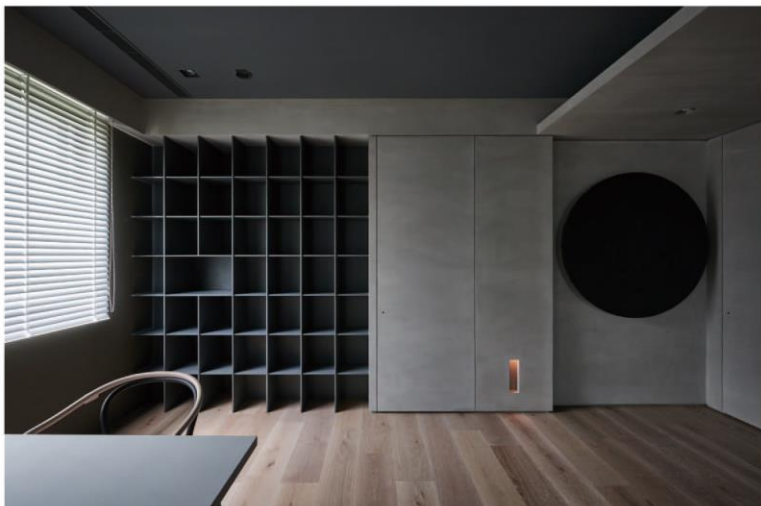




圓 | Circles

圓，從工藝與美術更深的本質性去探索，含括於場域裡的謙靜美意，融化樸質，內斂而自省，引為生活造境的肌理脈絡。

Circles, when explored from the deeper essence of arts and craft, include modesty, tranquility and beauty of the field, while integrating simplicity, poise and reflection, to form the texture and veins of the living environment.

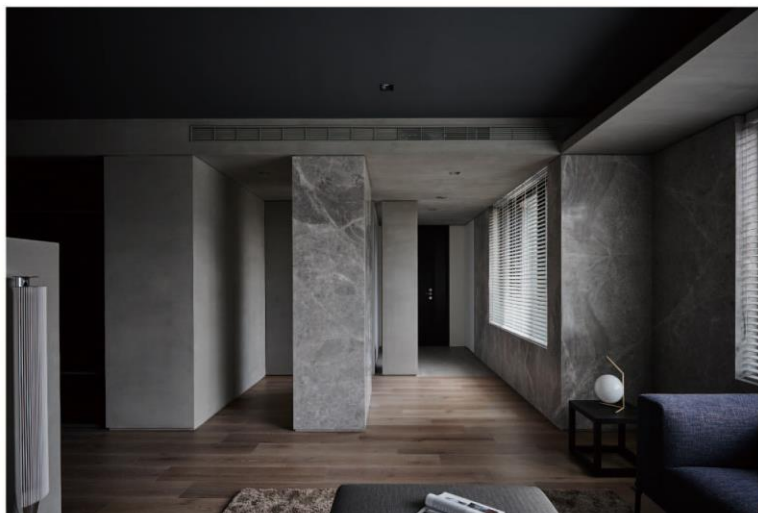




度 | Dimension

光，經由線性、垂直向度，轉化為空朗通透、虛實交映的感知覺受，蘊含自在樸實的氣韻與真實生活裡返璞歸真的態度。

Light is transformed into the perception of vacancy and transparency, as well as an interaction of emptiness and reality through linear and vertical dimensionality, which includes an easy and simple atmosphere, along with the attitude of returning to the innocence in real life.





量 | Power

灰階中純粹、自然樸素的材料，調整觸感，隱喻自在、清秀、雋逸，共構清簡悠然，安靜謙遜的溫暖印象。

Simple and natural materials in grey scales help to adjust the feel, creating the hidden warm impression of comfort, elegance, freedom, ease, meaningfulness, serenity and modesty.

