

TID 2015 Award
Taiwan Interior Design

居住空間/單層

The TID Award of Residential space / Single Level

界面折疊

The folding and overlaps of interfaces

近境制作設計有限公司

DESIGN APARTMENT

主持設計師

Chief Designer

唐忠漢 Chung-Han, Tang

協同設計師

Co-designer

方奕棠 Yi-Tang, Fang

攝影者

Photographer

岑修賢攝影工作室 MW PHOTO INC.

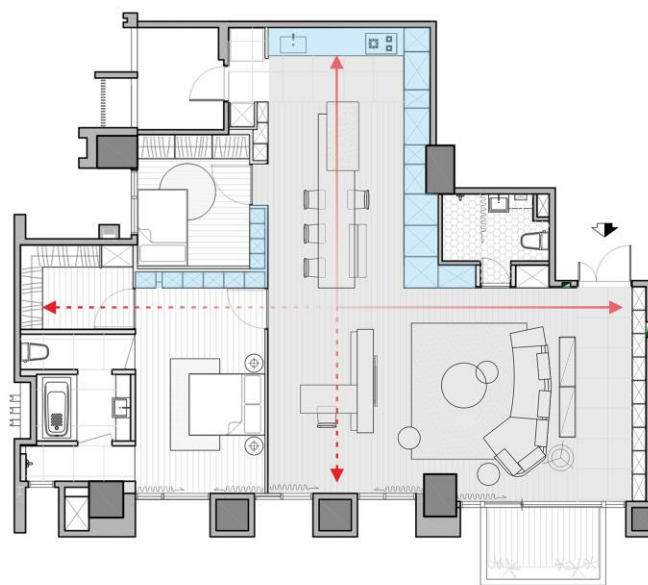
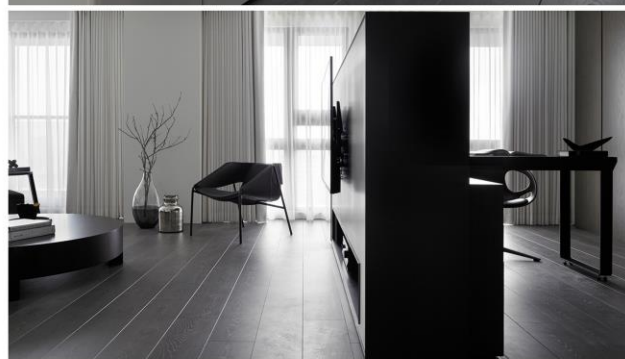
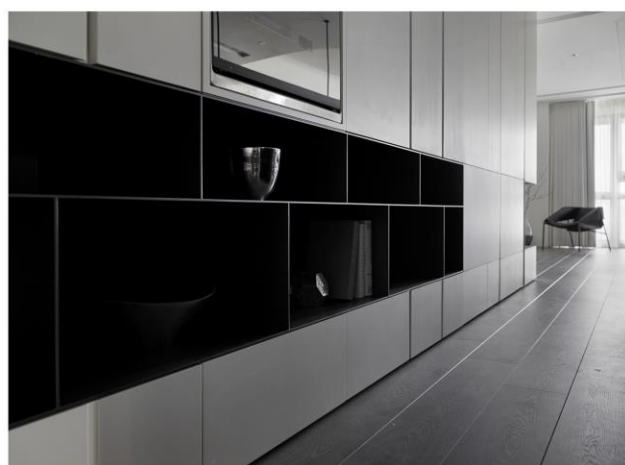


界面折疊

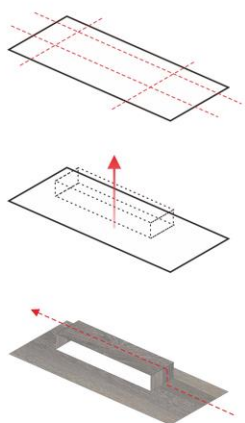
The folding and overlaps
of interfaces.

傢俱與空間共享同一量體形式，空間傢俱化，傢俱空間化，賦予了不同的生活機能。

The furniture and space share the same volume
form. The space and furniture are integrated in
one form.

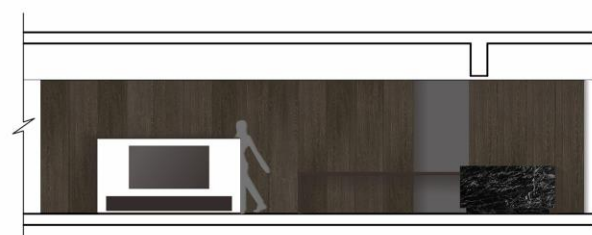


兩道雙面量體砌起廊道區域取代隔間，貫穿各個空間，並以餐桌中島，作為量體的分界點。量體本身透過分割及開口，強化虛實律動。當房門收起，量體佇立於走道兩側廊道的建築語彙，延展至各區域中企圖界定空間，卻又模糊邊界。



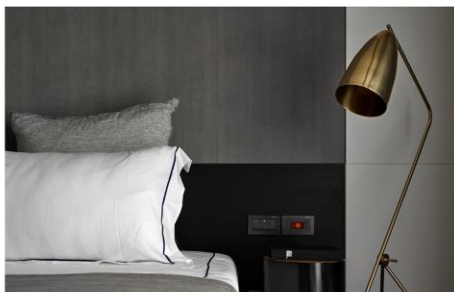
Folding

The furniture and space share the same volume form. The space and furniture are integrated in one form. This design grants the space with various living functions. Indirect light softens the folding marks of the ceiling and highlights a distinct layer to create a geometric aspect that possesses contemporary characteristics.



Ink Stone Building

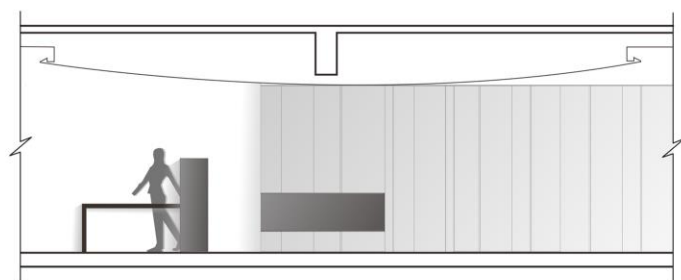
The angle and the wall surface create a sense of connection. The overlapping of board sheets and the integration of lights and shadows distinctively creates a geometric effect. Thus, a new kind of thinking unfolds.



場域延伸

運用實牆或量體交錯的手法，由主臥室進入主浴的過程，因著量體的置入。除了賦予實際的功能，也巧妙的區隔空間的形態形成廊道空間亦為更衣空間藉由不同的空間分配的可能性界定了場域也活絡了人於空間中的動線。





佇佇

刻意將量體運用穿透或局部開放的手法，除了虛化量體給人的壓迫感，更讓視覺得以在各空間中串連而延伸，透過量體的穿透觀察外在自然環境，於是環境光與影，因著有形的構物隨之變化帶來不同的生活體驗場景