

TID 2015 Award
Taiwan Interior Design

居住空間/單層

The TID Award of Residential space / Single Level

空間層敘

Layer Description of space

近境制作設計有限公司

DESIGN APARTMENT

主持設計師

Chief Designer

唐忠漢 Chung-Han, Tang

協同設計師

Co-designer

許郁晨 Yu-Chen, Hsu

攝影者

Photographer

岑修賢攝影工作室 MW PHOTO INC.



空間層敘

Layer Description of Space

論空間之佈局，
以中島為中心連結廚房、餐廳及客廳，
另將私密臥室空間與公共區域
利用更衣廊道串聯結合並隔斷分開，
使其狹長空間整合為一，
同時保有隱密及開放的空間變化。

一種對於生活的行為陳述，
以及關於空間的界定層次。

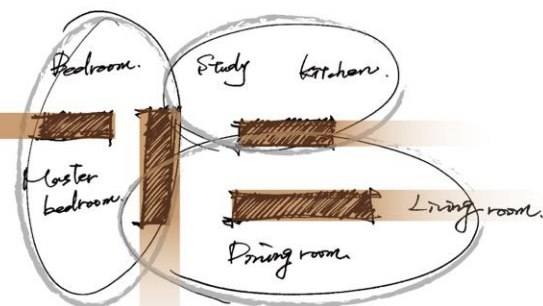
It is a behavior statement about life,
and a defining layer of space.



Layer Description of Space

It is a behavior statement about life,
and a defining layer of space.

Speaking of spatial distribution, we use the island as the pivot
to connect kitchen, dining room and living room together. We
also separated private bedrooms from other open spaces with the
connection and combination of changing corridors, integrating
the narrow and long space into one while maintain the space
change of privacy and openness simultaneously.





空間深度

基地條件屬於長型空間，以天花及地坪的材質延伸隱喻出空間長向優勢，放大視覺感官效果。並且打破單面採光限制，以穿透開放方式規劃空間，將光線導引入內，避免暗房產生。

Depth of Space

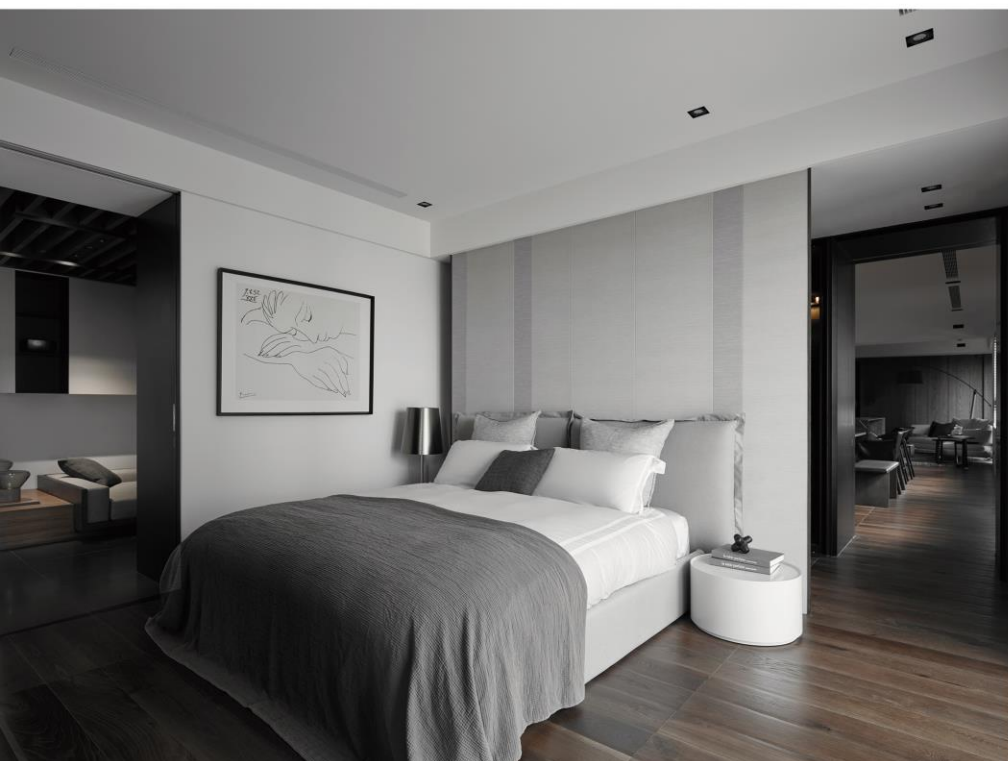
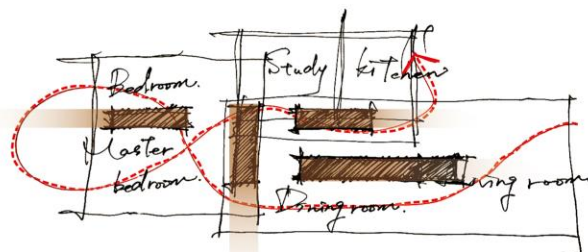
Due to the long-shaped space of the base condition, we enlarged the visual sensory effects by creating the horizontal advantage of space with the material extension on ceilings and floorings. We also broke through single lighting restrictions by organizing the space in transparent and open methods to introduce lights to indoor space to prevent dark rooms.

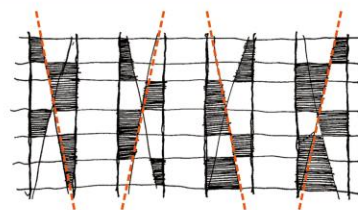
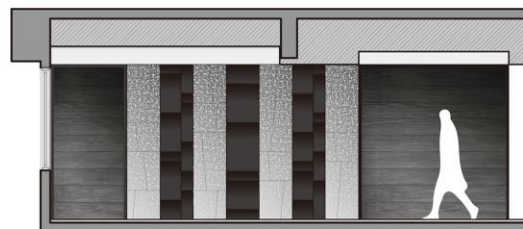




空間廣度

公領域中規劃中島創造動線迴流，增加生活的互動機會；私領域善用雙向動線及拉門運用，構成彈性的生活場域，隨著成員的變動，可在動線切換過程中創造出更多可能性，順應人生的不同階段，呈現多樣化的生活型態。





Domain Simplification

Under framed circumstances, we used bevel boards to hide structural walls and create a relative relation between the volume mass and the tangent plane. Inclined planes can be used to moderate sharp angles, enhance visual fluidity and create spatial rhythm.

Broadness of Space

We organized the island in the public area to create circulation backflow and enhance interactive opportunities in life. In private areas, we utilized two-way circulation and sliding doors to create a flexible living space. With the change of family members, more possibilities can be created during the circulation changing process and present versatile living styles in accordance to different stages of life.



折面向度

框架條件之下，利用斜板隱藏結構牆體，
形成量體與切面之間的相對關係，
斜面亦可緩和轉折角度，
增加視覺流動性，塑造空間韻律。

