

TID 2015 Award
Taiwan Interior Design

居住空間/單層

The TID Award of Residential space / Single Level

調色盤

Pure Art & Palette

雲邑室內設計有限公司

YUN-YIH DESIGN COMPANY

主持設計師

Chief Designer

李中霖 Chung- Lin, Lee

協同設計師

Co-designer

詹婉禎 Wan-Cheng, Chan

攝影者

Photographer

海瑞揚 Dirk Heindoerfer



PURE ART & PALETTE

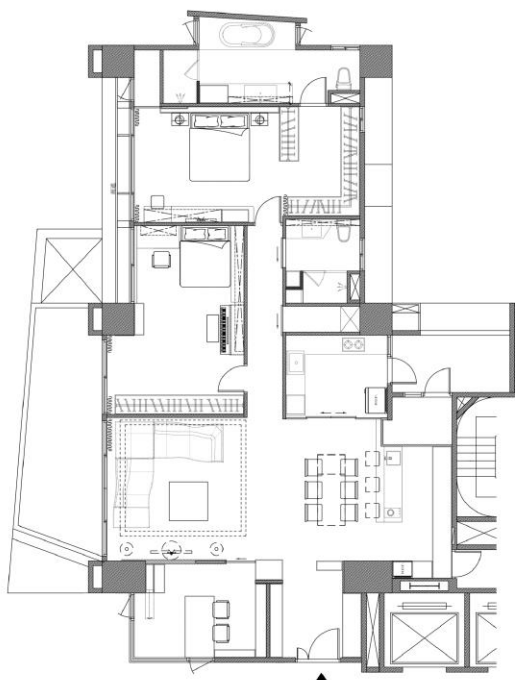


FORM



無暇的白，本身有種誇張、戲劇性的抽離，似是不食人間煙火，卻又依稀釋放一種戲謔的自嘲，設計者企圖破繭的掙扎，字裡行間透過色彩恣意揮灑，作豪放調色盤式的激烈解讀。

Spotless white possesses an exaggerated and dramatic detachment, like an otherworldly quality. That emits self-deprecation. The designer's struggle to break through the cocoon. Between the lines are splashes of color that interprets the intense passion of the palette.



COLOR

明度破表的艷鵝黃、攬住繁花綻放的花園狂想、骨子裡是黑白；卻能跟五彩輕鬆制衡的抽象構圖，忠實反照了一整個人間的，慾望。

The blindingly bright yellow, the blooming garden rhapsody, strikes an abstract balance with the black and white structure, honestly reflecting the desires of the mortal world.



LIGHTING

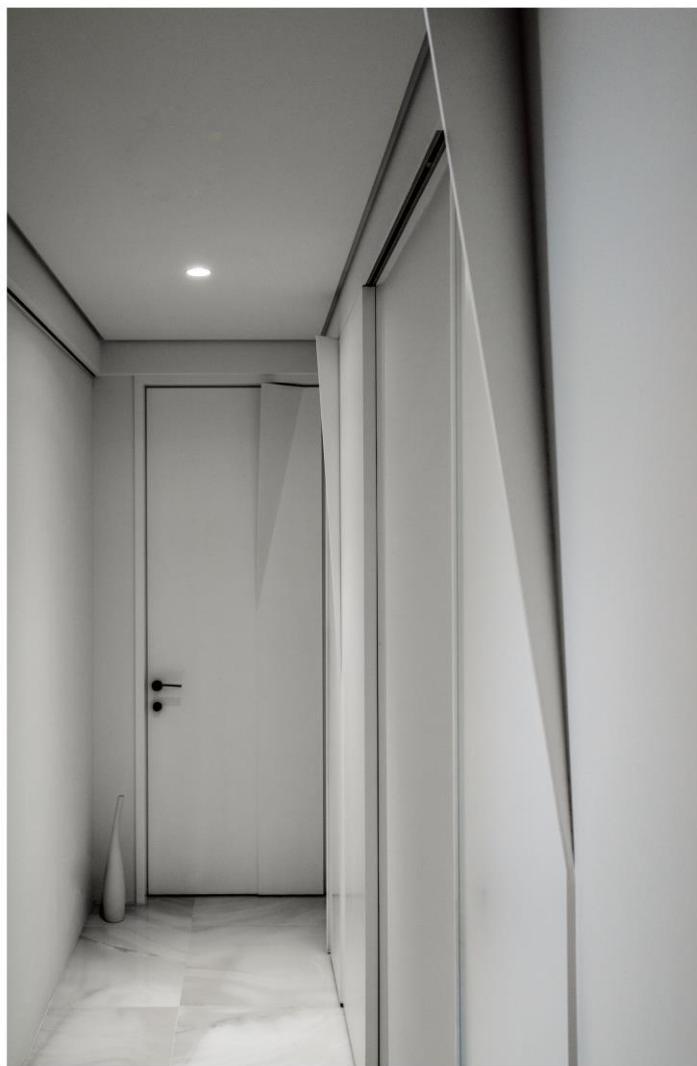
驀然，焦點落在盤踞一方牆上，朝不定向投影的星芒，正兀自以光；編織隨心所欲的嚮往，一闕由淨白；與絢爛，共生的狂想。

Suddenly, the spotlight falls on a wall, projecting starlight every which way, weaving a dream according to one's whim a rhapsody of pureness and splendor symbiosis.

CREATIVE

牆面深淺交織的序列線條，猶如規律；又不規律的心電圖，呼應天頂、主牆處，輕快轉折、騰飛、褶曲的線條，輪番牽引著感官，領受著忐忑與新鮮糾結的脈搏。

The layered lines that crisscross on the walls are an irregular electrocardiogram, connecting ceiling and wall with light, dexterous, folding lines that lead the senses and a quickening pulse.





Isn't that what represents the pure and minimalist appearance of life in its original form?