

TID 2015 Award
Taiwan Interior Design

居住空間/單層

The TID Award of Residential space / Single Level

斜暉

Evening Radiance

禾睿設計

LCGA DESIGN

主持設計師

Chief Designer

黃振源 Circle Huang

邱凱貞 Gina Chiu

攝影者

Photographer

嘿!起司 Hey!Cheese

斜 EVENING RADIANCE 暉

RESIDENTIAL | LIN RESIDENCE

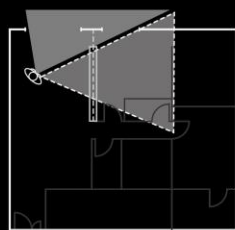
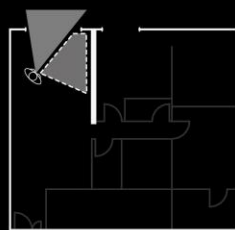


長時間的光影變化是自然的節奏；短時間的光影變化則是人的節奏。

On one hand, a change of light and shade in a long run is a natural melody. On the other hand, a change of light and shade in a short run is a manmade melody.

此案坐落於淡水河畔邊，從客餐廳和主臥室看出去都可直接欣賞到淡水河灣的景色。為了保持空間的開闊感受，設計導向主要著重於強調空間的穿透性，突顯窗外的河岸風光及採光面向的優勢。所以為了讓採光更大面積地納入公共空間，我們將區分客廳與主臥室的電視牆面以穿透的L型的金屬框架作為隔間，在視覺上將電視背牆與天花、牆柱托開。

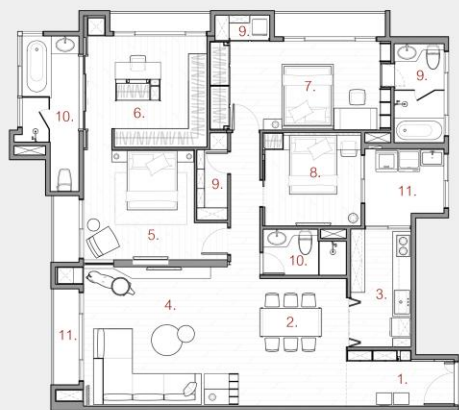
A design project aside the riverside of the Tamsui River makes the river scene available to the viewers in the living room, the dining room and the master bedroom. To keep the interior room wide and open, the spatial see-through exceptionally highlights the riverside scenery and advantageous lighting. To include utmost daylight in public room, a see-through L-shape metal rack of the TV wall that segments the master bedroom and the living room visually separates the TV back wall from the ceiling and the column.



original

more daylight ☀️





- | | | |
|----------------|------------------|--------------|
| 1. FOYER | 5. MASTER'S ROOM | 9. STORAGE |
| 2. DINING AREA | 6. DRESSING ROOM | 10. BATHROOM |
| 3. KITCHEN | 7. BEDROOM | 11. BALCONY |
| 4. LIVING AREA | 8. GUEST'S ROOM | |

客廳及臥室透過了這面窗型隔間，兩室在不發一語的情境下也能透過天光共享自然；或者透過開關燈及窗簾等活動來分享生活。

A window partition that segments the bedroom and the living room makes the both share natural daylight without dialogues and dally routines with lamps on and off and curtains open and close.

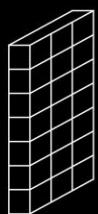


斜暉 | EVENING RADIANCE



斜暉 | EVENING RADIANCE





SHOWCASE / SCREEN



DOG



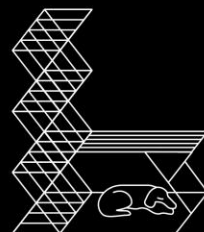
HOUSE



SIDE TABLE



MIX



在客廳的展示架在設計上我們結合了屏風、沙發邊几的功能，以及給屋主之一——傑克羅素犬的休憩區，屋主及寵物皆能在客廳共同愉快作息。

The display rack in the living room functional as a screen and a sofa side table as well as a lounge for the Jack Russell Terrier one of the owners makes the pet and its owner enjoy spending time together in the living room.



傢飾軟件配合空間，配色以重點局部式的橘紅色為裝點，整體空間以灰色為主要色調，經由材質的質感呈現變化。

自入口玄關具有斜度的天花轉折至客廳空間，整道立面選用大尺寸的水泥質感磁磚，以不間斷的鋪面方式，一氣呵成貫穿至底端，利用延續性增加空間氣度。

The furnishing follows the interior decoration in a gray hue with an orange color locally stressed. Alteration is managed by heterogeneous materials.

A slope ceiling begins at the entrance and ends at the living room. The large-size cement-style tiles apply to the whole elevation. A continuous pavement applies to the end. A magnificent concept is actualized with continuation in design.

