

TID 2015 Award
Taiwan Interior Design

居住空間/單層

The TID Award of Residential space / Single Level

碼頭·18

Pier · 18

璧川設計有限公司

Beatrix Design

主持設計師

Chief Designer

卓思齊 Angelo Cho

陳明封 Nomas Chen

協同設計師

Co-designer

林立雯 Layla

攝影者

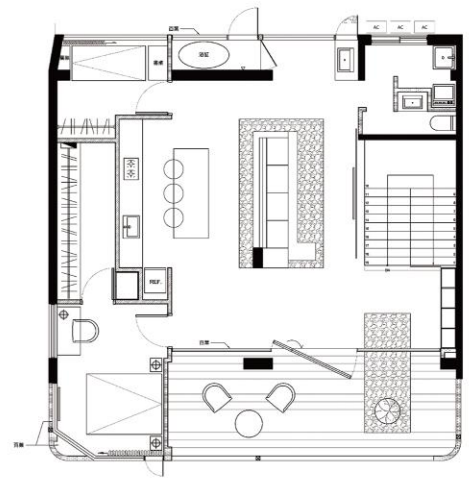
Photographer

卓思齊 Angelo Cho



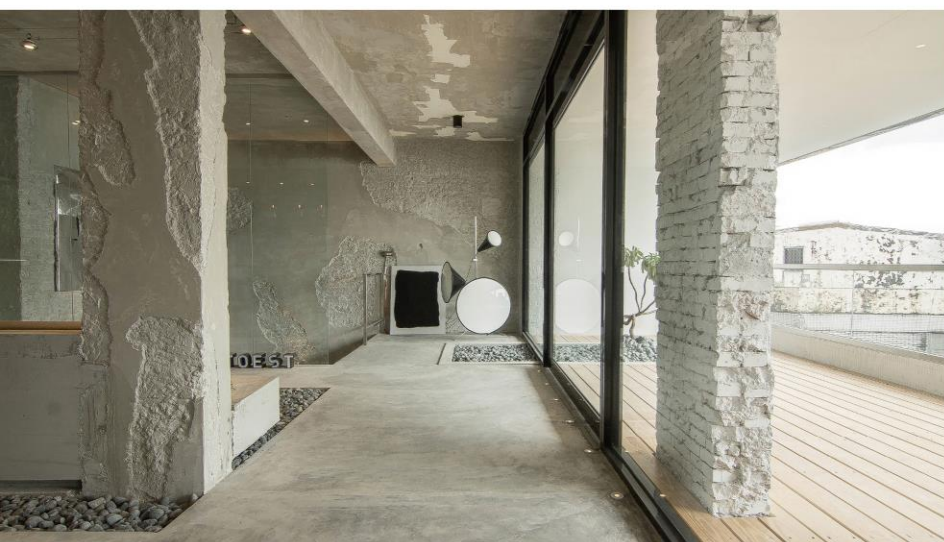
碼頭 · 18
Pier · 18





午後驟然一陣雷雨，濺潤在石縫中竄出的芋頭葉子上，葉上雨滴滾滾低落，順著山壁的青苔形成一條水流。赤著光腳，一杯傳統英式早餐茶，慵懶地躺在客廳旁的甲板陽台上，腳底感受著實木地板的粗糙肌理，陽光下湛藍斑波海面上緩緩的駛過一艘遊輪，令人不禁幻想著即將抵達的下個港口，將又是一場華麗與驚喜的探索。

Heavy thundery rain pouring down in the afternoon, splashing on the taro leaves protruding from the cracks on the stones. Rain drops rolling from the leaves and accumulating to become a tiny river along the moss on the mountain wall. With a cup of traditional English breakfast tea, lying on the deck-style balcony besides the living room, barefooted, and feel the rough texture of the solid wood flooring. A yacht is sailing on the blue ocean under the sun, making one to imagine the magnificent, surprising adventure waiting at the next harbor.





此案後方倚靠著綠意昂然的山壁，正面對著來往於世界各地船隻的基隆港，四十幾年的老建築豪氣干雲地向我們展示它帶著歲月印記的斑駁傾毀水泥牆及老舊管線。但是此案最令人印象深刻的風景卻是剛貸款買下這間老建築的新屋主夫婦，這對已經一起遊遍三十多個國家的新婚夫妻帶著一隻貓將很興奮的向我們介紹這間一般人看到可能會抿著嘴搖搖頭的老房子，表示自已已期待能居住在這間擁有海景並充滿可能性的新家。

In this case, the house, with mountain walls standing at the back, is facing the Keelung Port where ships from all around the world come and go. The old building with over 40 years of history is standing firm, exhibiting to us its historic mottled concrete walls and aged wires and pipes.

The most impressive scene of this case, however, is the new owners of the house, who just took a mortgage loan from bank in order to purchase the house. The newly-weds, who had traveled around over 30 countries together, with their cat, introduced to us the old house that may seem unsatisfying to many enthusiastically, and told us how they were looking forward to live in this new home with grand ocean view and unlimited possibilities.





因此在設計上我們決定以“冒險”作為此案的主軸，以甲板為意象劃分出帶狀的全景落地窗陽台，形塑出大船進港的精神。順應著老建築物充滿歲月痕跡的頹傾氣味，我們保留斑駁的水泥牆面任它的恣意漫延，將原有結構柱以模板灌漿結合成形設計沙發底座，底座下踏的是鵝卵石鋪成的地毯，後方再佐以預鑄水泥塊砌成的吧台，烹調出一道具有粗獷水泥味又兼具極簡俐落的菜餚。後方山壁在經過重新整地及綠化後，我們大膽的將浴室置於後山側並把牆面解放，不僅讓客廳也能閱讀到山壁的四季表情，更在泡澡的同時宛如置身於幽靜山林的溫泉中。

Hence we decided that “adventure” is the major concept of this case. A full-view French window balcony is designed according to the image of a ship's deck, creating the atmosphere of the ship porting at the harbor. And we preserve the mottled concrete wall to go along with the historic ancient style of the old house; performed molding and grouting on the original structural column to form the base of the sofa; and under the sofa there spread the “carpet” floored by pebbles. Behind all these is a bar built with pre-cast concrete, creating a scene that contains the roughness that concrete material provides while also shows the simple and neat style. After the mountain wall being reorganized and greened, we made the bold decision to place the bathroom at the mountain side and relieved the space from the boundary of the wall; not only this brings the scenery of the mountain in the four seasons all the way to the living room of the house, but also provides the owners with a bathing space that very similar to outdoor hot spring in the mountains.



